

# Lewisville/De

Sunday, June 8, 1997

© 1997, The Dallas Morning News

The Dallas Morning News

A SPECIAL REPORT

## KEEPING THE FARM

### Denton County group is working to preserve 99-year-old property

By Janis Leibs Dworkis

Special Contributor to The Dallas Morning News

**PILOT POINT** — If you walked into Roy and Burnie Jones' farmhouse in Denton County, you'd be taking a step back in time. Although the Joneses are no longer living, their 99-year-old farmhouse stands as testimony to a way of life that has all but disappeared from North Texas.

In fact, Jones Farm, located in the 48,000-acre Ray Roberts Lake State Park, is considered one of the prime examples of 19th-century rural culture in North Texas. And a group of local residents, known as Friends of Jones Farm, is working to preserve as much of the farm as possible.

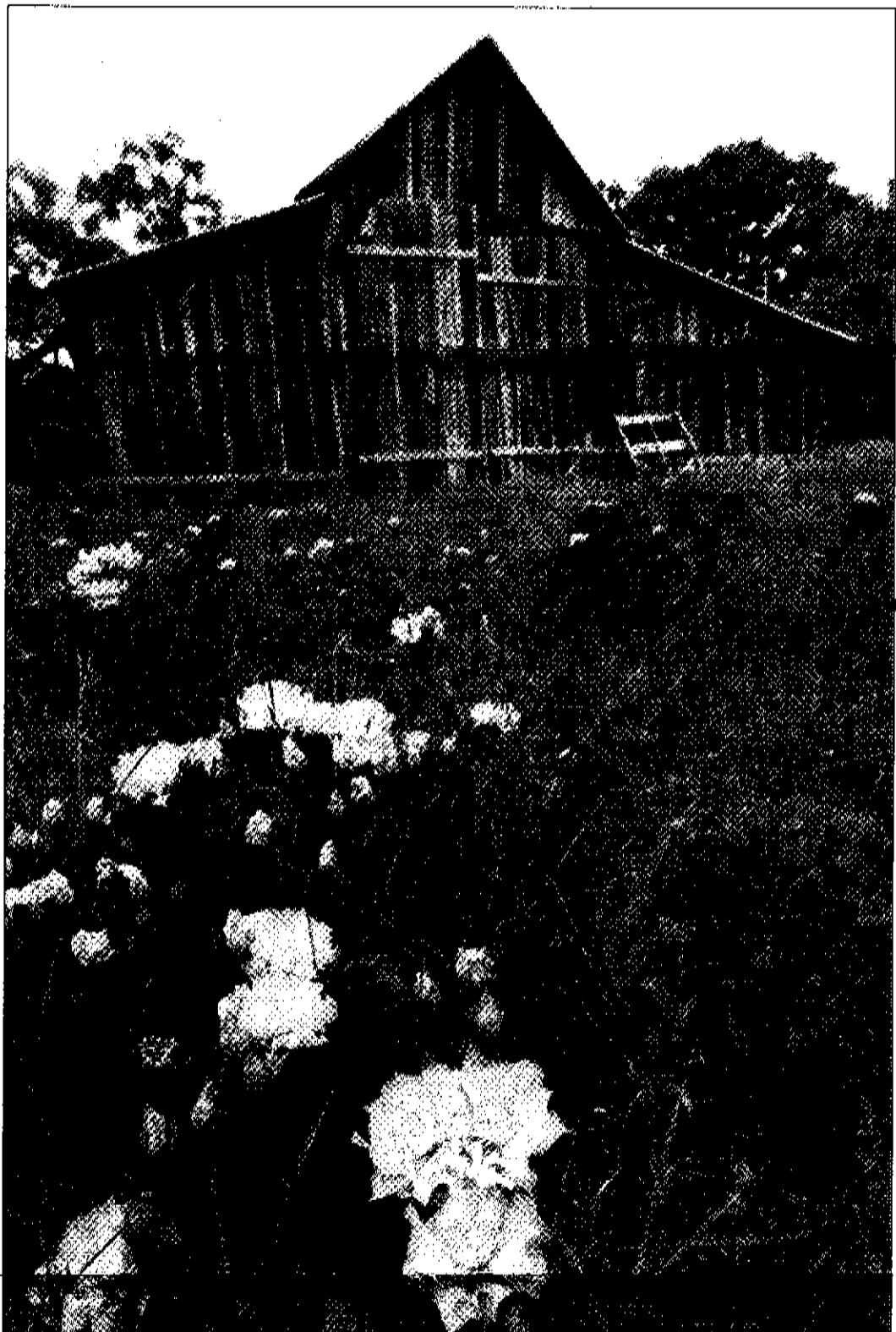
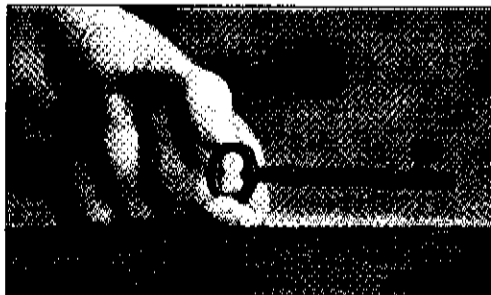
"We have a lot of artifacts here — primarily because the Jones family didn't throw their old stuff away as they passed from horse-drawn farming implements to the tractor — and we're really concerned about keeping those in Denton County," says Mike Cochran, president of Friends of Jones Farm and newly elected Denton city councilman.

The Jones family farmed the land for several generations — growing peanuts, cotton, corn, oats and hay, and raising chickens, sheep, cattle and hogs.

But when most families moved to the cities in the earlier part of this century, the Jones family kept their farm. Roy Jones lived on his farm until the U.S. Army Corps of Engineers bought his property in 1983. He then moved to nearby Pilots Point, where he lived until his death in 1995.

Mr. Cochran says the fact that the farmhouse

Please see **GROUP** on Page 4Q.



The Dallas Morning News: Juan Garcia



Above: This barn at the Jones farm contains equipment that was pulled by horses or mules. The farm, in the 48,000-acre Ray Roberts Lake State Park, is being preserved with an eye toward restoration. At left: Nadine Pitzinger is vice president of Friends of Jones Farm, which is working to preserve the 99-year-old farm. Above left: The old skeleton key at the Jones farm still works in the doors.

# Custom oven business is heating up

Tomrson team supplies  
ood-burning creations  
eateries nationwide

by Kelleyanne Noone  
Writer of The Dallas Morning News

LEWISVILLE — Pat Nicholaou and Steven Trueblood are all fired up about their business, a small Lewisville wood-burning oven manufacturer that supplies restaurants nationwide.

The mother and son are the founders and sole employees of Southwest Woodburning Ovens Inc., which produces custom stone pizza ovens. Mr. Trueblood makes them; Ms. Nicholaou sells them.

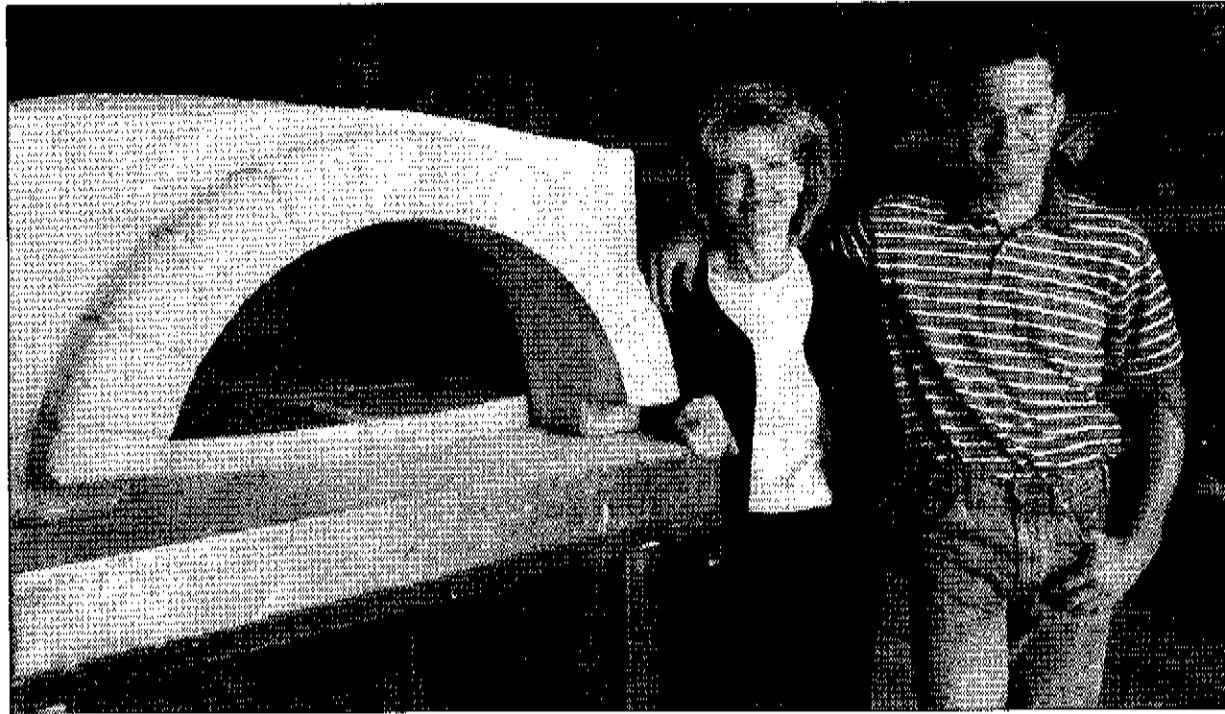
Ms. Nicholaou, 59, first heard about wood-burning ovens from attending trade shows for her job at an Italian import company, discovering that they were popular in New York, Chicago and California.

"I could really see the trend. A lot of the chains were starting to franchise out, and a lot of the companies were franchising out," said Ms. Nicholaou. "So I talked to Steve, and we decided to start our own little company. We traveled around and did a lot of research and went to a lot of restaurants."

Mr. Trueblood, 33, with experience in construction and woodworking, taught himself how to build the ovens. First, he sought tips from those who knew them best.

"I talked to the chefs and said, 'If you could change anything on your oven, what would you like to change?' and that's how I came up with my oven. I made my oven exactly what they wanted," he said.

They launched Southwest Wood-



The Dallas Morning News: Russell Bronson

Pat Nicholaou and her son, Steven Trueblood, stand beside one of their commercial wood-

burning ovens. Mr. Trueblood makes them and Ms. Nicholaou sells them.

burning Ovens three years ago with little capital but a lot of determination, and it's now one of three U.S. wood-burning oven manufacturers. Seven other companies import such ovens from Italy, they said.

Mr. Trueblood builds a wooden mold for the oven and then wraps it in fiberglass. To ensure a tight fit, he pours refractory material into the mold from front to back. He then completes the stonework on the exterior.

Developing a process that would guarantee a flawless — and stick-free — finish on the inside took him a year. Mr. Trueblood also designed a special flue to contain the smoke, preventing it from pouring out of the oven and possibly causing burns. The

flue eliminates the need for a hood over the oven, which other manufacturers' models require.

Ms. Nicholaou built up clientele strictly by cold calls, and the company has shipped 90 ovens, "with no complaints so far," she said. Three manufacturer representatives, including Barney LaBeaume and Co. Inc. in San Antonio, have signed on in the past six months. Ms. Nicholaou said she hopes to increase sales further by attending restaurant trade shows herself.

Southwest Woodburning Ovens also wants to tap the residential market. With a smaller model for home chefs, Ms. Nicholaou hopes to line up deals with homebuilders. The company has sold about a half-dozen of the smaller ovens, which go for about \$3,000, compared with \$4,000 to \$10,000 for the restaurant models.

Southwest Woodburning Ovens' first commercial customer was Cafe Terra Cotta in Tucson, Ariz. Among its others are Granite Cafe and Bitter End Brewery in Austin, the Original Pasta Company chain in Houston and Bellini's and Joe Viggs Italian Eatery in Oklahoma. A Hyatt Regency hotel in Guatemala has one, too.

Potential deals are in the works. Ms. Nicholaou said chefs from Eatzi's markets, a joint venture of Phil Romano and Brinker International in Dallas, are planning to cook in the ovens at the company's Lewisville facility and could purchase three. Southwest Woodburning Ovens also could land a deal with Romano's Macaroni Grill for several ovens if the chefs approve, she said.

Despite its small size, the company seems to have built a solid reputation among customers.

"We do quality work here, and it really doesn't matter the size of your place," said Mr. Trueblood. "I was always worried about people coming out, the franchise people, but if you have a quality item, it doesn't matter how big your shop is."

"They all like the fact that it's handmade," added Ms. Nicholaou.

Then there's the built-in good luck charm included with all ovens. Ms. Nicholaou sprinkles a little bit of sand from the Our Lady of Guadalupe shrine in Santa Fe, N.M., on every stove while it is being made.

"I hope this oven is good for the person who buys it," she says during the routine.



The Dallas Morning News: Juan Garcia

Kaye Dotson, state Child Welfare Director; Melanie Barry, CASA executive director; and Dr. Celia Williamson, University of North Texas social work department chairman.

A organization. Nevertheless, the organization still relies on community contributions for most of its funding and continues to struggle to remain in operation, Ms. Barry said.

Still, the organization is a lot better

with CPS on this pilot effort, Ms. Barry said.

"In cases where parents' rights are terminated, CPS starts looking for extended family to place the children with," Ms. Barry said. "But sometimes

#### Denton County Sports Assn., Inc.

- Convenient indoor range:
- 409 Copper Canyon Rd.
- DPS CHL & NRS Classes
- 7:00 a.m. 10:00 p.m. practice
- for qualified citizen members; Corps: 24 hrs.
- \$5 off CHL, class with ad. Metro 817-241-2376

A/C Company needs Customer Service Rep & Warehouse Helper. Great people, benefits, 401k & good pay! Nonsmoking office. Call 972/221-4373, Lewisville Texas

## Spring Fling!

# 6.9%

annual percentage rate\*

**NEW**

Auto, Boat and RV Loans

# Group seeks to preserve 99-year-old Denton County farm

Continued from Page 10.

hasn't been altered since Mr. Jones left adds to its historic value. "Right now, it's as if Mr. Jones had just walked out the door. The calendar page had is still up on the wall. There are all kinds of farm equipment in various states of disrepair, just like he left them. And you can feel in the barn where the wood is smooth in places from years and years of farmers' hands."

In addition to the 99-year-old farmhouse, the property includes a barn built in 1939 (after lightning demolished the family's original barn), two chicken houses, a corn bin, two sheds that house part of the family's blacksmith shop and other equipment, and several cattle chutes.

Mr. Cochran first heard about Jones Farm about 10 years ago, "When the property was already

owned by the Corps of Engineers and was included in the proposed Ray Roberts Lake State Park. At that time, the Texas Department of Parks and Wildlife, which manages the park, was considering two concepts for the property: developing it into a full park facility or leaving it alone to eventually decay.

"That's when Friends of Jones Farm came together," Mr. Cochran says. "We had about 125 people come to our first meeting 1987. The level of support has just been amazing to me."

The group's first concern was to secure the property in its current condition to protect against the vandalism that could degrade its historic value. In response to those concerns, the Corps built a security fence around the property and two canopy-style sheds to protect the corn crib and some of the horse-

drawn equipment. In the meantime, the Parks Department has been considering its long-term plans for the property.

"We have operational responsibility to basically mothball Jones Farm until 2000," says Russel Fishbeck, park manager for Ray Roberts Lake State Park. "After that, I don't know what direction our agency will take with it. I would think that at least the main house could be preserved in its present state and open to the public for tours. But there are a lot of people with different goals and dreams for the property. So we'll just have to wait and see what direction the agency wants to go."

The long-term goal of Friends of Jones Farm is to restore the farmhouse to its early 20th-century appearance and open it to the public. "We envision it as a museum, but

a touchable museum," says Nadine Pitzinger, vice president of Friends of Jones Farm and a former friend and neighbor of Roy and Burnie Jones. "We want to restore it to its 1904 appearance, and we do have photographs of it from that time. We'd have to take off some enclosed porches and take out a bathroom to get it back to that state. Some of us are hoping to be able to do that work ourselves."

In the meantime, before the fate of Jones Farm is finally settled, Ms. Pitzinger, a retired schoolteacher, gives tours of the farm to school groups. "I really want to preserve Jones Farm for educational purposes — for the children, or for anyone who doesn't know how a farm was operated," she says. "I'm amazed at the number of people who have turned out so far."

Janis Letts Dworkis is a Dallas-based free-lance writer.



November 25, 1992

Mr. Melvin Willis  
District Manager  
GTE Southwest  
P.O. Box 520  
Denton, TX 76202

Dear Melvin:

I'm glad we were finally able to visit about the Jones Farm and the Bloomfield School and I appreciate your interest.

As I promised, here is a letter I received from Mike Cochran on the status of the Jones Farm plus a press release from the Corps of Engineers. This project remains very much alive and there are a number of interested people continuing this cause.

Regarding the Bloomfield School...I will contact the University of North Texas and find out more.

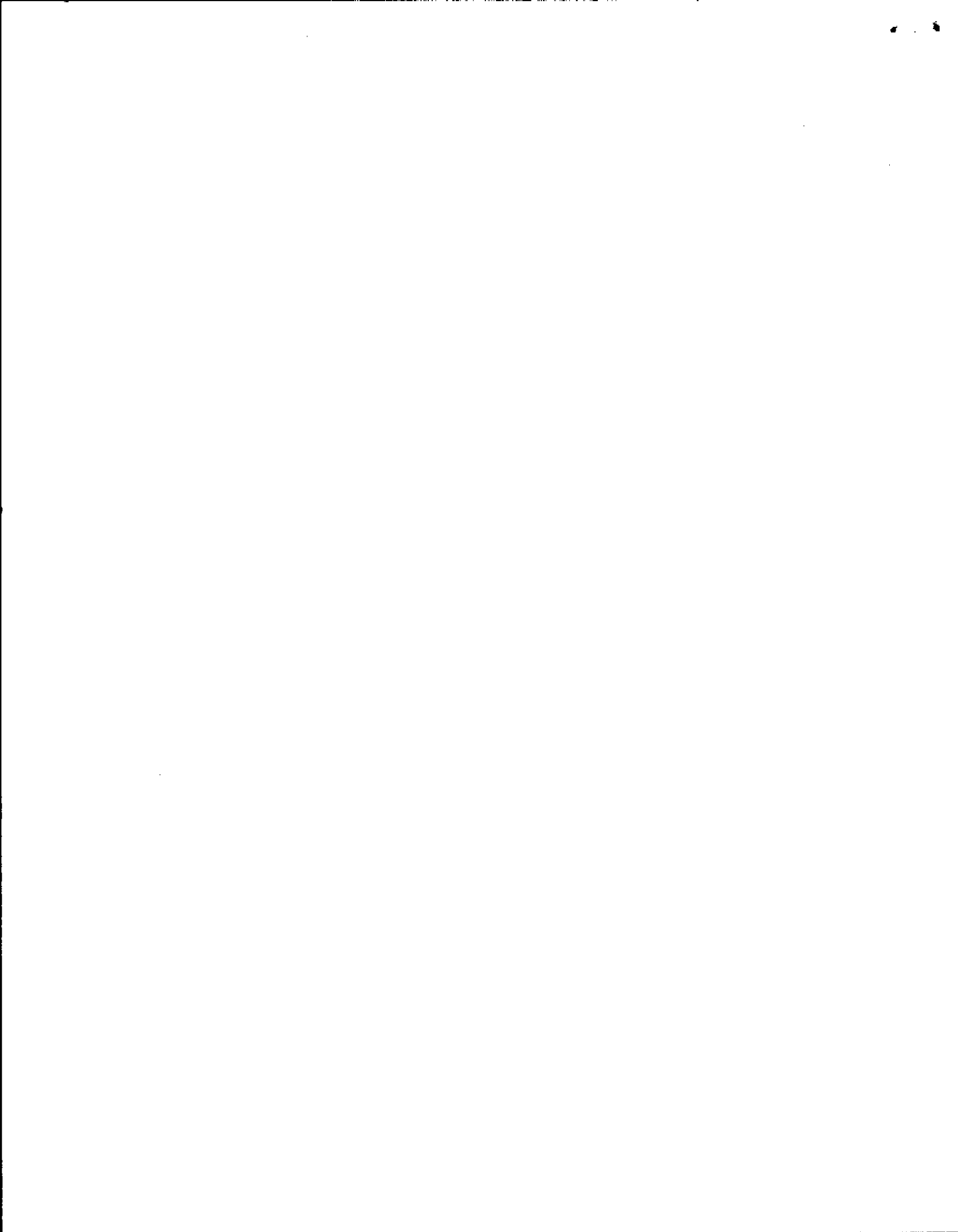
Thanks for your support of the Convention & Visitors Bureau and your friendship. Folks like you keep me going!

Sincerely,

Jo Ann Ballantine  
Vice President

*File*

*call Susan 5-4746  
will call me.*



## Friends of the Jones Farm

1301 East Pecan  
Gainesville, Texas  
76240

November 6, 1992

Dear Faithful Members,

The Friends of the Jones Farm will meet, on Saturday, November 14, to discuss some important new developments pertaining to the Jones Farm (see enclosed press release).

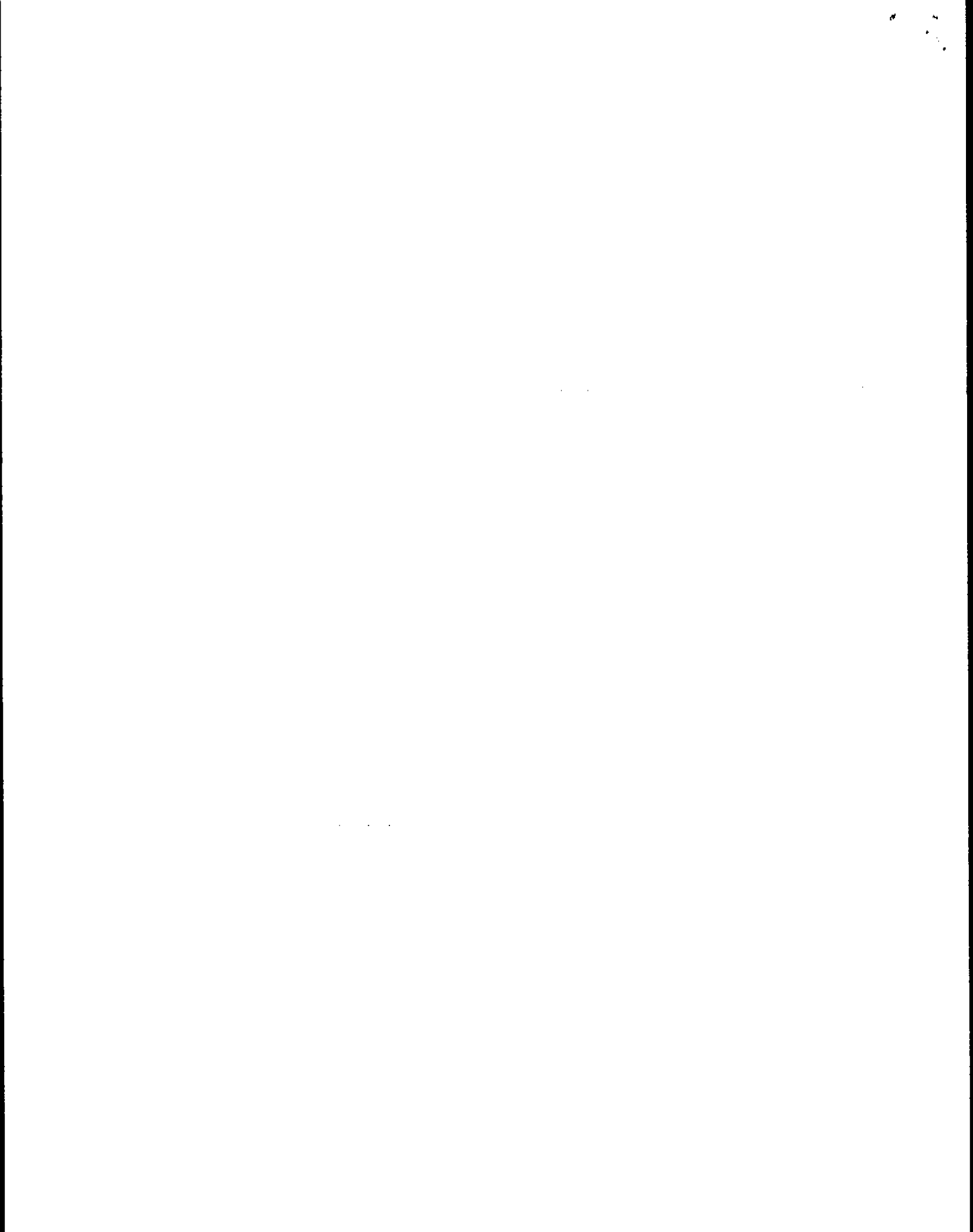
The meeting will be held at 10:00 am at the Mountain Springs Community Center. The Center is located on FM 372, just north of FM 922 (take I-35 to Valley View from Denton or Gainesville, exit on FM 922 and go east). Following the business meeting the group will visit the Jones Farm, which is located in the Johnson Branch State Park.

We invite all members and other interested citizens to this meeting to learn about the conclusion of negotiations with the U.S. Army Corps of Engineers and the Texas Parks and Wildlife Department.

As you all know, we have been waiting for the last several years for the Corps and Parks and Wildlife to come to some agreement about the future of the Jones Farm. Now it's time for us to act and we need your energy and ideas to help us determine where we go from here.

Sincerely,

*Margaret Hays & Mike Cochran*







US Army Corps  
of Engineers  
Fort Worth District

# News Release

CESWF-PA-92-0074

SALLY A. WERST

Release No.

Contact

Immediate 10 Sept 92

817-334-3409

For Release:

Phone:

## Jones Farm Agreement Signed

A unique, cooperative plan for the management and potential development of the historic Jones Farm, located at Ray Roberts Lake near Denton, has been signed by federal and state agencies and private citizens. The plan provides the opportunity for future development of the Jones Farm by the Texas Parks and Wildlife Department (TPWD). TPWD has agreed to maintain the Jones Farm buildings in their present condition and to provide security until the year 2000.

Working together will be the Fort Worth District, U.S. Army Corps of Engineers, the Texas State Historic Preservation Office, the Advisory Council on Historic Preservation, the Texas Parks and Wildlife Department, and Friends of the Jones Farm, a group of people interested in preserving the 140-year-old farm.

The Corps of Engineers has placed exhibits on the Jones Farm at the Denton County Historical Museum, Morton Museum of Cooke County, and Red River Historical Museum. These are available for loan by schools and libraries. The Corps is also publishing a descriptive report on the farm which will record its present condition using archeological, archival, architectural and oral history data. The Corps will nominate the farm to the National Register of Historic Places and ensure that the equipment and other artifacts are properly curated and made accessible for study purposes.

Persons interested in joining the Friends of the Jones Farm may contact Margaret Hays, 1301 East Pecan Street, Gainesville, Texas 76240, (817-665-4854), or Mike Cochran, 609 West Oak Street, Denton, Texas 76201, (817-387-0995).



12/13/90 - Letter from the State Historic Preservation Officer (Executive Director of the Texas Historical Commission), Curtis Tunnell states that mitigation should only take place if preservation is not an option. "Since the site will not be inundated by the lake, is located within a proposed state park, and is National Register eligible . . . development of the site into a 'living history' farm under lease agreement with the TPWD constitutes the appropriate action. In fact, we feel it would be an inappropriate expenditure of taxpayer money to conduct extensive archaeological excavations at Jones Farm at this time."

He concludes, "We believe that this site warrants immediate listing on the National Register and that a preservation planning document for its management should be written. The document can then be used by the Corps of Engineers, the TPWD, and the local support group known as the Friends of the Jones farm to secure funds toward establishing a 'living history' farm. Both the educational and economic benefits of such a project would be great."

### Jones Farm Meeting

The Friends of the Jones Farm will hold a meeting at 10:00 am at the Valley View Senior Citizens Center on Saturday, January 19, 1991. The Center is just off the town square, 2 blocks West of I-35 on FM 922.

The purpose of this meeting is to confer with FJF members to determine how best to proceed in our efforts to have a "living history" farm at the Jones Farm in Johnson Branch State Park, Lake Ray Roberts.

We haven't lost this fight yet and we need you in-put, so please try to attend.

Friends of the Jones Farm  
1301 E. Pecan  
Gainesville, Texas 76240

### Final Notes

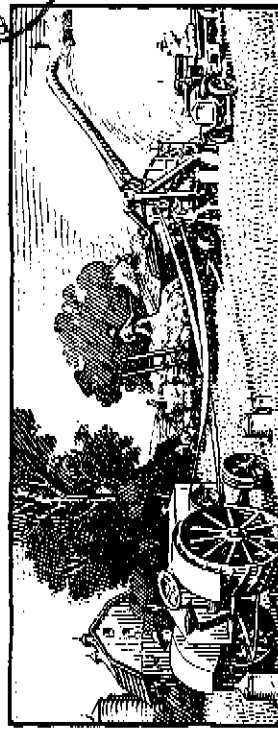
Those of us that have been following the Jones Farm question feel sometimes as if we have been on a roller coaster ride of high expectations and dashed hopes. At the moment, things look less positive. The Corps of Engineers has as its main objective to get out of the Jones Farm and Ray Roberts as quickly and as cheaply as possible. In doing so they have started a process called "mitigation". The term "mitigation" sounds innocent enough, but it in fact has a dark side to it. For this work they have hired the U.N.T. Archaeology Department, to assess and document the damage to the farm that has been caused by their actions and the presence of the lake.

The point that FJF, that the Texas Historical Commission, and that the Advisory Council on Historic Preservation have all made is, why not put some of the funds available for mitigation into preservation. If you preserve, mitigation is less important, and certainly the archaeology can wait until surplus funds are available.

What is important right now is that the structures at the Jones Farm be preserved, listed on the National Register of Historic Places, and be put into use for the citizens of Texas as soon as possible. Some of the options suggested by the Corps are to fence off the site and let nature take its course or bulldoze for "construction purposes" (see Chronology 10/11/90). This is clearly not acceptable.

We hope that you will join with us at the FJF meeting so that we can forge a plan of action to avert this tragedy.

Mike Cochran



Jo Ann Ballantine  
Convention and Vis. Bureau  
P. O. Drawer P  
Denton, Texas 76202

# Friends of the Jones Farm

A Newsletter for Friends and Acquaintances of the Jones Farm  
January 1991



## From the President

Dear Friends:

Much has happened with regard to the Jones Farm since we last communicated, and the Chronology given in this issue should bring you up to date.

Vice President Mike Cochran and I went to Ft. Worth and Austin in February 1989 to visit with Corps and Parks Department officials. From then until April 1990 we heard nothing, and then the news was not what we wanted. As indicated in the Chronology, the Parks Department did agree to put in writing that they would stabilize the farm for ten years. The Corps has outlined its proposed mitigation plan and considers that it will thus complete its responsibility for the Farm. The Texas Historical Commission, however, takes the position that, instead of the mitigation plan proposed, the Corps should prepare a preservation plan for the Farm for use whenever funding may be available.

In view of the divergent views of the agencies, the Texas Historical Commission took this matter to the Advisory Council on Historic Preservation for dispute resolution, a procedure provided by the National Historic Preservation Act of 1966. So far no effective resolution of the differences has been reached.

We are calling a meeting of the Friends of the Jones Farm for 10:00 am, Saturday, January 19, 1991, at the Senior Citizens Center in Valley View Texas, so that we may determine the wishes of the Friends group regarding what action to take.

We hope to have a good attendance at this meeting, for we need the in-put from each and every member.

Sincerely yours,

Margaret Flays, President

## Jones Farm Chronology

*What follows is a lengthy, and fairly detailed account of the past few years of negotiations over the fate of the Jones Farm. This Chronology, compiled by Margaret Flays, helps bring into perspective the complex picture of what has been going on concerning the farm at the state and federal levels. We felt that it was important to share this information with the members of the Friends group so that you can see for yourself some of the issues involved.*

*We have highlighted several important passages in case you want to skip over the first part and get to the heart of the matter.*

1986 - Texas Historical Commission (THC) memo on field Trip indicates Texas Parks and Wildlife Department (TPWD) is interested in the Jones farm structures for an interpretive exhibit and that the Corps had suggested a Memorandum of Agreement (MOA) to ensure TPWD understanding of responsibilities. On 3/13/86 the THC wrote the Corps, stating that the Jones Farm "is eligible for the National Register of Historic Places."

11/23/88 - THC letter to the Corps regarding upcoming meeting of persons interested in the Jones Farm, stating "the Jones Farm (has) .. outstanding interpretive potential ... We support efforts for in situ development of the site for public educational purposes rather than documentation and demolition."

11/30/88 - In response to request from Margaret Flays and Mike Cochran, the Corps met at Mountain Springs Community Center with TPWD and more than 100 interested citizens from the North Central Texas area. A tour of the Jones Farm site followed. First suggestion that a Friends of the Jones Farm (FJF) be started came from that meeting and more than \$600 was raised on the spot.

1/7/89 - Organizational meeting for the FJF held at Valley View. First FJF newsletter followed.

The Friends of the Jones Farm - 1301 E. Pecan, Gainesville, Texas 76240  
President: Margaret Flays (817) 665-4854 - Gainesville  
VP & Newsletter Editor: Mike Cochran (817) 397-9965 - Denton  
Treasurer: Linda Stephenson - Gainesville  
Secretary: Beth Marshall - Sanger

A non profit organization dedicated to the preservation of the Jones Farm on Ray Roberts Lake and to the study of agricultural history in the North Texas region.

2/21/89 - Margaret Hays and Mike Cochran met with the Corps at Fort Worth to express interest of FJF in having the Jones farm developed.

2/28/89 - Margaret Hays and Mike Cochran went to Austin to consult with TPWD and THC officials. TPWD was receptive to the idea of development but non-committal regarding possibilities; made suggestions for FJF action such as collecting historical data. THC was very supportive.

Summer 1989 - TPWD did interim stabilization on buildings at Jones Farm.

4/23/90 - After more than a year of no contact, Corps invited FJF to a meeting in Fort Worth with Corps and TPWD officials. FJF was told that the Corps and the TPWD agreed that it would not be feasible for them to sign a MOA. Corps stated that it had only \$150,000 for mitigation, but the TPWD estimated the cost of development at \$1,000,000. Both indicated they would be pleased if FJF would raise funds for development. In response to request, FJF suggested, among other things, that some traveling exhibits be prepared about the Jones farm and perhaps a native prairie be developed at the site for demonstrating historical farming techniques. Corps suggested possibility of having a "History Festival" at the site.

5/1/90 - Corps issued press release regarding meeting of 4/23/90, reporting that agreement between Corps and the TPWD for an MOA could not be reached. The Corps would proceed with mitigation plan consisting of archival research, oral histories, architectural documentation, archaeological excavation and possible farm implement relocation.

6/1/90 - Letter from THC to Corps suggesting that, instead of proceeding with proposed mitigation plan, the Corps develop and implement a preservation plan that would include "stabilization and routine maintenance activities that will properly protect the site" for possible future development into a historic park; and discouraged the proposed relocation of farming implements.

6/9/90 - Meeting of FJF at Sanger.

6/27/90 - Congressman Stenholm's office called Corps regarding Jones farm, particularly about plans to relocate farm implements.

6/28/90 - At Corp's invitation, FJF met in Fort Worth with Corps, TPWD, and THC. Attending on behalf of FJF were Hays, Cochran, Charles Bartush, Cooke County Judge, Jim Robertson, Cooke County Commissioner Kenneth Alexander, and representatives of State Senator Steve Carraker, and State Representatives Ric Williamson and Jim Horn. Also in at-

tendance was Patti Kent, a representative of Denton County Commissioner Buddy Cole.

At this meeting, THC submitted statistical data on the popularity of historical sites and historical museums with Texas tourists. Corps reviewed its mitigation plan (see 5/1/90 above), also stating that completion of such plan would remove the Jones Farm's eligibility for the National Register of Historic Places and complete the Corps' responsibility for the Jones farm. Corps and TPWD presented removal from the National Register as a positive step, but THC and FJF took to opposite view. Corps stated that the farm implements would remain at the Jones farm during the stabilization period. TPWD stated that Jones Farm "is primarily of local interest" and emphasized the cost of developing and maintaining a living history museum. As a result of FJF's insistence on a written commitment working toward development, TPWD agreed to commit to writing its intent to continue maintaining the structure for 10 years. Following this meeting the THC stated that the matter could be taken to the Advisory Council on Historic Preservation if the divergent views could not be reconciled. The Advisory Council is a federal agency, charged with overseeing the Historic Preservation Act. Any federal agency, such as the Corps, must have its actions regarding historic preservation, reviewed by the Advisory Council for compliance with the federal Historic Preservation Act of 1966.

7/5/90 - THC letter to the Corps stating "we continue to recommend a preservation program for the site rather than the mitigation plan," saying the site, "could some day be utilized as an interpretive center for early 20th century farming practices in North Central Texas." They recommended that "the Corps and the TPWD enter into an agreement to preserve the site for a 10-year period," and that such a preservation plan could be "utilized by the two agencies and the FJF to promote funding." The THC also recommended that the Corps build a fence around the site and have the farm listed on the National Register. It also expressed concern about the proposal to conduct archaeological investigations at the Jones Farm rather than activities that would promote preservation of the structures.

7/13/90 - Letter from State Senator Steve Carraker to TPWD "urging them to fund the Jones Farm."

7/25/90 - Letter from the Corps to the State Historic Preservation Officer, the director of THC, with mitigation plan revised to provide a pole barn at the Jones farm to store and protect artifacts and to produce a "popular report" about the Jones Farm.

8/14/90 - THC letter to Corps reiterating that a Na-

tional Register nomination for the Jones Farm should be prepared (which could "aid in securing funds to preserve it"), that a detailed preservation plan for the Jones Farm be prepared, that the suggested fence be erected, and archaeological excavations be given a lower priority.

8/28/90 - Letter from Andrew Sansom, Executive Director, TPWD, to State Representative Ric Williamson that the TPWD "is currently working with the Corps of Engineers, the THC and the Friends of the Jones farm to explore all future preservation alternatives."

9/11/90 - Letter from the Advisory Council on Historic Preservation to the Corps stating that "the proposed mitigation plan is not appropriate," and "this approach to the management of historic properties does not comport with the intent of the Act (National Historic Preservation Act) or the wording of Section 110 (of the Act)."

Further the Council stated, "we find that the consequences of the proposed mitigation were misrepresented in the Record of Meeting notes dated July 28, 1990," and "the perception that conducting the proposed mitigation would conclude the Corps' responsibility to the Jones Farm and remove its eligibility from the National Register is incorrect. The Farm, after conducting the proposed mitigative actions, would remain the Corps' responsibility..."

In addition the Council pointed out that, under Section 111 of the Act, historic properties under the Corps' ownership leased to another entity, "would require Council's review . . . and a Preservation Plan" to ensure maintenance compatible with Section 106 of the Act.

In conclusion, the Council stated, "we wish to emphasize that the content of the SHPO's letters of June 1, July 5, and August 14, 1990 are consistently correct and accurate in their portrayal of the Corps' legal responsibilities to the Jones Farm."

10/11/90 - Letter from the Corps to replying to Advisory Council's letter in which Corps re-states its belief that with the current mitigation plan it has fulfilled its responsibilities to the Jones farm. They further state that, "we have encouraged and will continue to encourage future interpretive development of the farm..."

They continue, however, stating, "after mitigation is complete, the site may be allowed to deteriorate, be razed and destroyed for construction purposes, or be utilized for interpretive development should funding become available."

10/23/90 - Letter from the Acting Assistant Secretary of the Army (Civil Works) to Congressman Charles Stenholm stating the Corps position on the Jones Farm and stating that all the Jones Farm implements will remain on site during interim stabilization, "but can be put on loan for use should interpretive development take place."

11/5/90 - Letter from the Advisory Council to the Corps stating that disagreements still exist between the State Historic Preservation Officer at the Texas Historical Commission and the Corps.

The Council, although recognizing the positive elements of the proposed mitigation plan, states that "the intent of the plan as a mechanism for the Corps to divest itself of any future management responsibilities for the Jones farm violates Sections 106 and 110 of the National Historic Preservation Act." In this regard, the letter points out several incorrect assumptions of the Corps, including the fact that "implementation of the mitigation plan will absolve the Corps from further responsibilities to the properties regarding future impacts." It further states that "the Corps should fulfill its Section 106 responsibilities by developing a preservation plan" (re SHPO's letter of 8/14/90).

This letter also suggests that the Corps "initiate negotiations with the Friends of the Jones Farm ... to pursue the development of a cooperative agreement or lease pursuant to Section 111 of the Act ... Initial start-up monies for developing an interpretive facility may be obtainable from the funds that would have otherwise been used for (archaeological) excavation under the mitigation plan or through other funding available to the Corps."

In conclusion, this letter states: "In short, the proposed mitigation plan is founded on misinformation about the Corps' legal responsibilities, and fails to recognize the opportunities available to the Corps which would promote effective management of the resource, public involvement, interest and support. With appropriate revisions, the mitigation plan be developed into a preservation plan that would change the Corps' management approach from one leading to ultimate destruction to one which promotes preservation and enhancement of the resource for the public's enjoyment and benefit."

11/15/90 - Telephone conversation between M. Hays and the Texas Historical Commission in which it was learned that the Corps would proceed with the planned archaeological work at the Jones Farm and settle the dispute as it goes along.



## University of North Texas

Department of Biological Sciences  
Division of Environmental Sciences  
Institute of Applied Sciences

February 4, 1991

Ms. Margaret Hays, President  
Friends of the Jones Farm  
Cooke County Heritage Society  
1301 E. Pecan  
Gainesville, Texas 76240

Dear Ms. Hays:

As part of our continuing historical and archaeological research in the Ray Roberts Lake area, we are currently conducting investigations at two historic farms. These farms include the Jones Farm and the Johnson Homeplace. This research is funded by the U.S. Army Corps of Engineers, Ft. Worth District.

You and your organization's members are cordially invited to tour the Jones Farm at Ray Roberts Lake on Saturday, February 16, 1991, from 10 A.M. to 3 P.M. A map is enclosed, and large road signs ("NTSU Archaeology Open House" in green letters) will direct visitors to the farm. This tour is subject to Texas Weather, but it will go on as scheduled in light rain or mist.

The tour will include a guided walk around the Jones Farm and will include displays of farm implements and preserved artifacts. There are plenty of flat, grassy places to have a picnic lunch, so bring a blanket or folding chairs if you wish.

Sincerely,

Bonnie Yates  
Susan A. Lebo

FRIENDS OF THE JONES FARM:

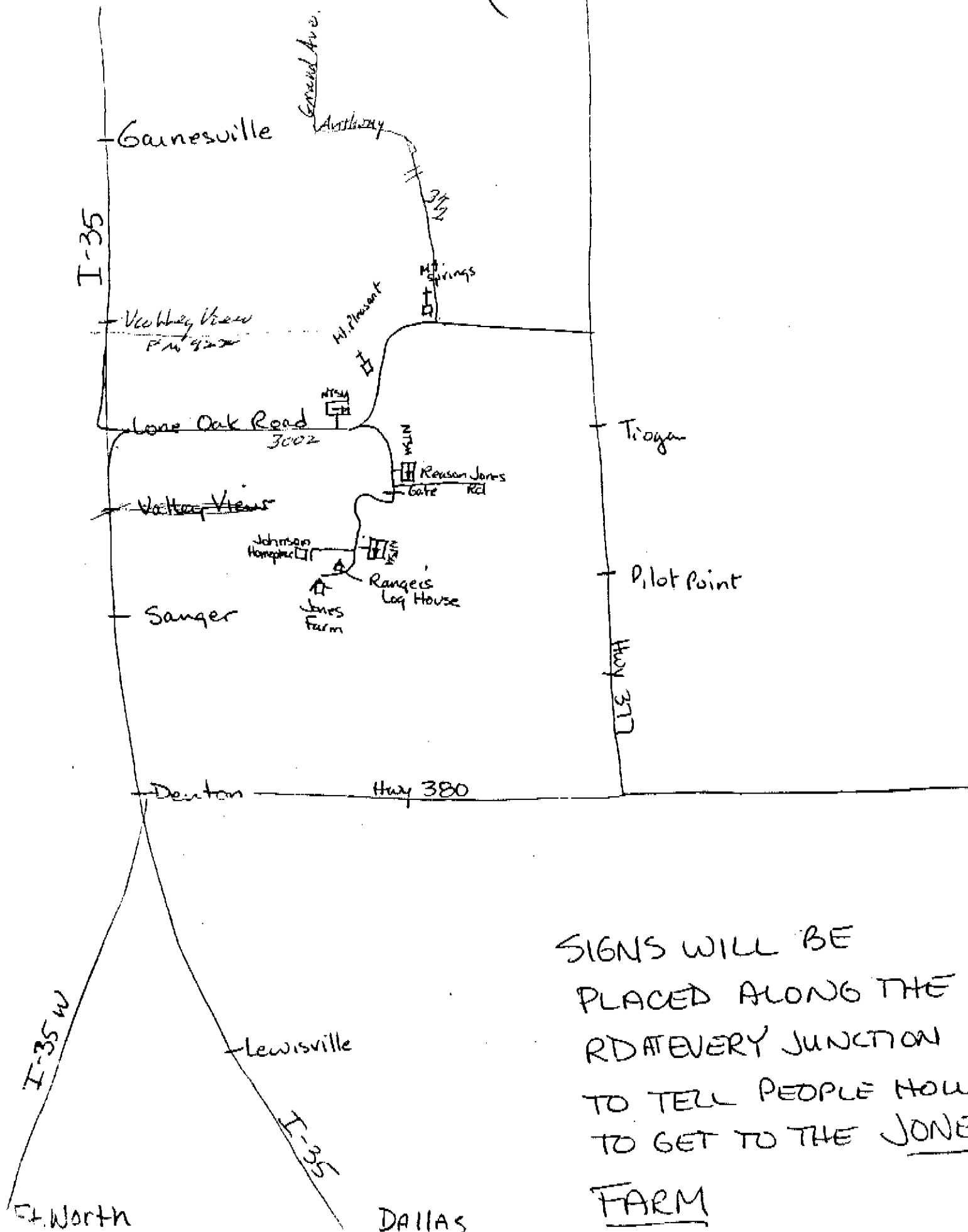
This letter has just been received. All who wish to come are welcome.

This will be a chance to see the archeological work being done now and to view the large agricultural equipment before it is placed under a protective covering.

We look forward to seeing you there.



(NOT TO SCALE)



SIGNALS WILL BE  
PLACED ALONG THE  
ROAD AT EVERY JUNCTION  
TO TELL PEOPLE HOW  
TO GET TO THE JONES  
FARM

# JULY

- 1.....Battle of Gettysburg, 1863  
 2.....Washington signed into law a bill authorizing purchase of land at West Point, 1790  
 4.....Independence Day  
 4.....Stamford: 60th Cowboy Reunion  
 6.....Denton Starrise: Bread and Circus Theatre presents "A Double Dose of Disaster," Civic Center Park (566-8270)  
 8.....Liberty Bell cracked, 1835  
 9.....Washington D.C. established as Capitol, 1791  
 11.....Jefferson wrote that English and Spanish both had designs on the Mississippi, 1790  
 12.....Carrollton: Christmas in July Barbecue  
 13.....Denton: Senior Adults Keep Cool Celebration, Senior Center (566-8280)  
 13.....State Department presented plan to establish uniform currency, weights, and measures  
 15.....Congress passed bill providing support for lighthouses, beacons, buoys, and public piers, 1790  
 20.....Apollo astronauts landed on moon, 1969  
 20.....Denton: Ice Cream Social, Northlakes Center (566-8287)  
 20-21.....Denton: Original Children's Books Illustrations from the Massie Collection, Meadows Gallery  
 23-28.....Decatur: Old Settlers Reunion (817/627-7090)  
 26.....U.S. Postal Service founded, 1775  
 27.....Korean War ended, 1953  
 27.....Outlaw Sam Bass died, 1878  
 31.....First U.S. Patent Office opened, 1790

## NO TEXAS HISTORICAL MARKER

### A Hero Tragedy Stalks Beyond the Grave

Andrew Jackson Hitchcock  
Born at Columbus, Ga., Feb. 21,  
1814. Came to Texas a member  
of Capt. Wadsworth's Co., Ga.  
Batt. Was with Col. Fannin at  
Goliad Massacre and escaped.  
Burned to death at Denton, Tex-  
as, Aug. 25th, 1887.

"A brave soldier, a true friend  
and charitable Christian"

The grave of this brave  
man, who for some unaccountable  
reason is not yet properly plac-  
ed in Texas History may be  
found near the northwest corner  
of the IOOF Cemetery. The mar-  
ker has been vandalized.



## FRIENDS OF JONES FARM MEETING Valley View, June 9th

Two members of the Denton County Historical Commission attended. Denton, Cook, Wise, Montague, Collin and Grayson counties were represented and an Antique Farm Equipment Society from Cook County.

After listening to President Margaret Hays and Vice President Mike Cochran, we left with these impressions:

1. The U.S. Corps of Engineers and the Texas Parks and Wildlife Dept. know nothing about North Central Texas farms and are thinking of a career advancement.

2. Talk of money necessary for more study--when North Texas has made a very complete inventory of everything on the farm, and an in-depth oral history. Everything is there just waiting.

3. Money for a visitors center--completely out of character with the idea of a working farm museum. All this sounds like a Walt Disney production--not a down to earth learning experience. There are successful working farms with parking away from the farm--approached by walking through a natural setting--no visitors center--met by guides in dress of the period and guided through the farm.

4. Unless someone with available political clout becomes interested in Jones Farm it will be lost forever. There is already talk of sending the many pieces of horse drawn farm equipment to another location.

This farm is complete down to the last nail. It needs to have conservation measures taken and the house refurnished in the period. Also a lot of yard work done.

\*\*\*\*\*



# NEWSLETTER.

DENTON COUNTY HISTORICAL COMMISSION.

DENTON, TEXAS.

PUBLISHED IN COOPERATION WITH THE DENTON COUNTY COMMISSIONERS COURT  
VOL. XII NO. 124 JULY 1990

\*\*\*\*\*  
DALLAS COUNTY  
HISTORICAL COMMISSION

June 7, 1990

Book Depository Building, Dallas

Eleven members of the DCHC met with the Dallas County Historical Commission at their regular monthly meeting in the Commissioners Courtroom at 12 noon. The meeting was conducted at a brisk pace by Chairman Helen Jankowski.

The meeting was over in one hour and ten minutes. Members of both Commissions walked to an East End restaurant for a lively lunch. Many ideas and problems were exchanged along our two long tables.

The DCHC visited the 6th floor Museum at the Book Depository as guest of the Dallas Commission after lunch.

\*\*\*\*\*  
FINE ARTS THEATER

Building on the Square

The building has been vacant over seven years, and its future clouded due to fire damage. It has been leased by the Denton Bible Church. It is scheduled to move its outreach center in during September.

The center will have a coffee shop atmosphere with an informal congregation approach. The neon lights will remain and the interior murals will be preserved. An estimated \$50,000 will be invested in the building, with attention given to maintaining its architectural integrity\*\*\*\*\*

From a letter by Jane Biles

\*\*\*\*\* Main Street Program Manager

\*\*\*\*\*  
TOMBSTONE FOUND

Shortly after arriving in the DCHC office the morning of June 20th, Peggy Jordan received a call from the Denton County Sheriff's office. Deputy O'Brien said someone had turned in a tombstone and wondered if we could locate where it belonged. The stone had washed up in a creek bed west of Denton on Airport Road.

The stone read, "John Tilman, son of L.B. and Kathleen Shaver, Born July 8, 1920; died July 10, 1920.

The cemetery records were checked and the exact location for the stone was found, lot #27 in the IOOF cemetery.

The information has been turned over to Phoebe Tarver, to oversee replacement.

\*\*\*\*\*  
40 AND FORWARD

Nineteen-ninety marks the 40th anniversary of the Fort Worth District, U.S. Army Corps of Engineers. The district was established in April 1950, a year after flooding devastated the Fort Worth-Dallas area.

\*\*\*\*\*  
BOWIE OLD COURTHOUSE GOING--GONE

Despite efforts of the Historic Bowie County Foundation, Inc., the old Bowie Court house is in the process of being demolished. The building was seriously damaged by fire in August 1987.

\*\*\*\*\*





### OLDEN ROANOKE

Ross Brown, Roanoke's first entrepreneur. If there was a nickel to be made Ross knew how to make it. Or he would think up a way to do it like the time he set up an assembly line in the back of his store for dressing turkeys. Leo "Powerful Pete" Boutwell was the hatchet man; Floyd Hogan was the hot water dip man. Ross hired the local people to pluck the feathers. The pay--one nickle per bird. Woe unto anyone who tore the skin of their bird. Have you ever plucked a turkey? The skin is very thin. When they would tear the skin Ross would give them a needle and thread and have them sew it up.

Another story of Ross Brown. One day a religious group of people came to see him. "Mr. Brown, God has told us that you are going to let us use your theatre to hold our Sunday service." Ross came right back with the reply, "In that case, just as soon as God tells me about it you can use it."



### LATEST ON JONES FARM

The Fort Worth District of the U.S. Army Corps of Engineers and the Texas Parks and Wildlife Dept. have completed a joint study of the historic Jones Farmstead located in Denton County on Ray Roberts Lake.

The Corps has a contract with the University of North Texas to record information on the farm. This will include archival research, oral histories, architectural documentation, excavation and possible farm implement relocation.

The Friends of the Jones Farm group has been asked to provide suggestions for consideration in the mitigation planning and future operation of the farm.

Margaret Hays chairs the group with Mike Cochran as vice-chair. For more information contact Ms Hays at 817-665-4854 or Mike Cochran at 817-387-0995.



### WISH LIST

Denton County Historical Museum is on a treasure hunt for a few good donations. A volunteer or two would be nice finds, too. The museum hopes Denton County residents will search their homes--and Grandma's for old original oil paintings of local history sites. Also old family post card photographs from Denton and surrounding counties to create a photographic history of the county.

For more information on volunteering or donating call 817-383-8073. Office hours are 9 a.m. to 5 p.m. Monday - Friday.



### SHARED LETTER TO TAYLOR HAWK FROM MARGARET HENDERSON--AUSTIN,

We lost our little 17 year old dog, Hilda. I wanted to tell you that Saturday we drove out to see where the vet bury her out in the country behind a sanitary landfill in a field. When we saw the area, I suppose we were a little hesitant about it until we drove down the road behind the landfill and came upon the largest iron bridge I've seen--marked with a historical marker--which lead over the river and into a park made from old pecan grove. It was beautiful and so picturesque. We decided we'd always remember Hilda resting behind that gorgeous park rather than behind the landfill.

I wanted to tell you this because it illustrates why your Historical Commission work is so important. In a world that's being filled with wrecked cars and sanitary landfills, you all preserve wonderful spots and places. And you'll probably never know or guess what other people appreciate about that work you do--or why, but to me that's when you know your work is important--when there's really no measure for it.

Since I know of your work in particular, I wanted to express our thanks to you historical workers for a job well done for all of us.



SONS OF THE REPUBLIC OF TEXAS

DCHC member, Hilton Lee (Bud) Whitehead of Lake Dallas is now a member of the Sons of the Republic of Texas. His great grandfather, Theodore Stanton Lee participated in the Seige of Bexar, the Battle of Concepcion, and the Grass Fight in October and November 1835. T. S. fought at San Jacinto; during the battle he was wounded. Afterwards he served as a Major in the Quartermaster corps under A. Huston as buyer of "beeves", accountant of ship stores and special courier for Borden and Edward Griften to President David Burnet in 1836.

T.S. died in December, 1884 and was buried in Harwood, Gonzales County, TX. In 1936 the State of Texas marked his grave.

NATIONAL ASSOCIATION  
OF CIVILIAN CONSERVATION

Corps Alumni

The National Association of Civilian Conservation Corps Alumni, Fort Worth Ch. 123 is searching for the people who were in anyway connected with this great organization. The organization, founded during the Great Depression by Federal Government, has been known by several names, including CCC Boys, F.D.R.'s Tree Army, Forest Planters, and so forth. Most of our lovely state and national parks, many bridges and roads still in use, all are products of the labors of this group during the Great Depression.

DON'T MISS

Shown now at the Hall of State at Fair Park by the Dallas Historical Society "The History of Texas from 1823-1848". It includes the only copy of the Texas Declaration of Independence in a private collection. It is the copy believed to have been used to make the well-publicized forgeries, before it became a part of Stevens collection.



1990 PRESERVATION CONFERENCE SESSION

"Building from a Volunteer Base to Prepare a Community Preservation Plan"

Two books from this session have been placed in our library for future study. They are, Historic Preservation Plan for Georgetown, Texas and City of Bryan, Historic Preservation Plan.

These are very detailed books of plans two cities have in operation.



"Texas is worse than any other (Southern) state because she had never been whipped," said David S. Stanley, occupying general of San Antonio.

\*\*\*\*\*

Mesquite wood is so durable the pioneers referred to it as "Texas Ironwood".

\*\*\*\*\*

In 1989 we acquired a "state fish"-- the Guadalupe bass--strictly a Texas species.

\*\*\*\*\*

The only home built in the United States by the representative of another nation as his private residence still sits today on a hill east of the Capitol in Austin. In 1840, Jean Pierce Isidore Alphonse Dubois de Saligny, secretary to the French Embassy, purchased 21 acres of land in Austin and constructed a house styled as a legation of the French government.

\*\*\*\*\*

On any given Sunday you can hear a noon mariachi Mass at the San Jose church in San Antonio.

\*\*\*\*\*

Texas has 91 mountains more than a mile high all located in the Trans-Pecos region of West Texas

\*\*\*\*\*

DENTON HOTEL & MOTEL ASSOCIATION

JUNE 15, 1990

Members present: Al DeBerry, John Gavin, Larry Story, Robin Wright, George Gilkeson, Margaret Butner, Sherrie Etheredge, Angela Kretzschmar, Mary Podhaski, Jo Ann Ballantine, and Janie McLeod.

Chairman Al DeBerry called the meeting to order at 12:40 p.m.

Al discussed the new rules for the bed races that will be sponsored by the Hotel Association for County Seat Saturday on September 15. Al suggested some possible uses for funds that are collected from the bed races. Janie McLeod suggested the distribution of funds be discussed and voted on at the next meeting.

Janie said she attended a two day seminar and is certified to teach classes on "Texas Hospitality". She offered to teach the classes to the hotel employees and managers. The courses will begin in about six weeks. She requested that anyone interested in attending to contact her at the Chamber office. The cost will be \$10.00 per person.

Jo Ann Ballantine said she will be requesting reports from TNET for data on conventions for months that the hotels have low occupancy. This will enable the Bureau and the hotels to solicit more conventions for the slower months.

The next meeting will be held on Tuesday, July 24 at 10:00 a.m. at the Chamber office.

The meeting was adjourned at 1:08 p.m.



TEXAS  
PARKS AND WILDLIFE DEPARTMENT  
4200 Smith School Road Austin, Texas 78744

COMMISSIONERS

CHUCK NASH  
Chairman, San Marcos  
RICHARD R. MORRISON, III  
Vice-Chairman  
Clear Lake City

BOB ARMSTRONG  
Austin

HENRY C. BECK, III  
Dallas

GEORGE R. BOLIN  
Houston

DELO H. CASPARY  
Rockport

WM. L. GRAHAM  
Amarillo

BEATRICE CARR PICKENS  
Amarillo

A.R. (TONY) SANCHEZ, JR.  
Laredo

March 22, 1989

Ms. Jo Ann Ballantine  
Denton Convention & Visitors Bureau  
Denton Chamber of Commerce  
414 Parkway  
P.O. Drawer P  
Denton, TX 76202

Dear Ms. Ballantine:

Thank you for your recent letter concerning the Jones Farm on Ray Roberts Lake. Quite a number of people have written to the Department to express their concerns about the project.

We are presently in the early planning stages for the Jones Farm and will be working with the Corps of Engineers to coordinate potential development. Maintenance work is scheduled this spring to protect the farm buildings until long-range decisions can be made. Opportunity for additional input will be afforded the public during the planning process. The success of the project will ultimately depend on local involvement and participation.

We appreciate your interest in the Jones Farm and look forward to your continued support.

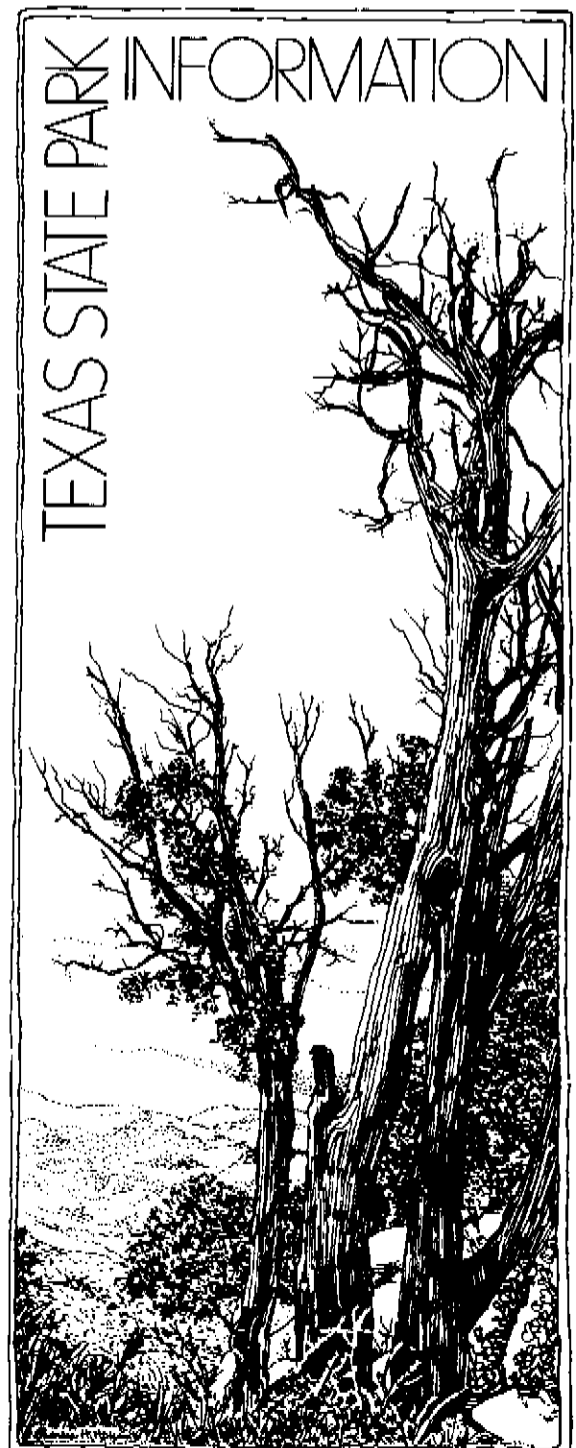
Sincerely,

Wilson E. Dolman  
Director of Parks

WED:BWH:sam

800-  
792-1112-  
make  
Merrill - 9/6  
WCB

TRAVIS  
ector



TEXAS STATE PARK INFORMATION

TEXAS PARKS & WILDLIFE DEPARTMENT  
4200 Smith School Road  
Austin, Texas 78744

# INFORMATION

For additional information call toll-free  
1-800-792-1112. In the Austin area  
please call 389-4890.

Published by:  
TEXAS PARKS & WILDLIFE DEPARTMENT  
4200 Smith School Road  
Austin, Texas 78744



Depositor of this publication conforming with Texas State Documents  
Copyright Law, and it is available at Texas State Publications Clearing-  
house and Texas Depository Libraries.

PWD-BR-4000-000-12/87

## SUMMARY OF REGULATIONS GOVERNING THE USE OF TEXAS STATE PARKS, HISTORIC SITES, SCIENTIFIC AREAS AND PORTS INCLUDING ENCOMPASSED WATERS WITH THE INCORPORATION OF RELATED LEGISLATIVE ENACTMENTS

REGULATIONS ADOPTED PURSUANT TO AUTHORITY GRANTED BY ACTS 1971, 62ND LEGISLATURE, REGULAR SESSION, CH. 283 (CODIFIED AS SEC. 13.101 - 13.110, PARKS AND WILDLIFE CODE)

A full text of the Rules and Regulations adopted by the Parks and Wildlife Commission on March 4, 1982 is available on request. For specific details on regulations refer to PWD-1-4000-000-5/86, obtain at park headquarters.

### LEGISLATIVE ENACTMENTS

The penalty for violation of a Texas State Park regulation is a Class C Parks and Wildlife Code Misdemeanor—An individual adjudged guilty of a Class C Parks and Wildlife Code Misdemeanor shall be punished by a fine not less than \$25 nor more than \$200.

These regulations may be enforced by any peace officer of this State (Sec. 13.108, Parks and Wildlife Code), including duly appointed employees of the Texas Parks and Wildlife Department designated as peace officers by authority of Sec. 11.019, Parks and Wildlife Code. A citation may be issued by these officers for violation of a regulation.

As authorized by Sec. 13.108, Parks and Wildlife Code, any person causing, contributing to, or directly or indirectly responsible for disruptive, destructive, or violent conduct endangering the health, safety, or lives of persons, animals, or property may be removed from a Unit of the State Park System for a period up to forty-eight (48) hours; a person may be enjoined from re-entry for a longer period for cause shown by a court of competent jurisdiction. Before removal, a person shall be placed on notice of this fact by the Park Superintendent or his subordinate and given an opportunity to correct his or her conduct.

Hunting is prohibited, except by permit (Sec. 62.081, Parks and Wildlife Code). Removal of rock, earth, coal, state minerals or other materials without consent of the Park Superintendent constitutes theft (Sec. 31.03, Penal Code).

Willful damage to or destruction of State or private property constitutes Criminal Mischief (Sec. 28.03, Penal Code).

Archaeological sites and features are landmarks unless otherwise designated by the State Antiquities Committee and a permit is required to alter, take or excavate the site, American Indian or aboriginal paintings, hieroglyphics, marks or carvings are protected (Sec. 191.002, Natural Resources Code).

Dumping of trash, sewage, or waste into or adjacent to any water is a violation of Chapter 26, Subchapter D, Water Code.

Disposing of trash, junk, garbage, refuse, unsightly matter or other solid waste on a public highway, right-of-way, other public property or into land or coastal waters without written consent of the owner, agent, or official in charge, is a violation of Sec. 2.01, Litter Abatement Act, Revised Civil Statutes, Art. 4477-9a.

Disorderly conduct is prohibited (Sec. 2.01, Penal Code).

All Texas laws governing the operation of motor vehicles are applicable within a State Park.

All provisions of Title 4, Parks and Wildlife Code, concerning water safety provisions apply to lakes and waters in a State park.

### REGULATIONS - GENERAL

1.03 Payment of an entrance fee is required to enter a State park.

1.04 Payment of a user fee is required for use of most facilities. A facility may be used only for its intended purpose. Only authorized equipment may be used at a facility.

1.05 Facility users may not exceed the maximum limit of persons, vehicles, trailers and equipment established for a facility. Only the type of vehicles, trailers and equipment designated for a facility may be used.

1.06 Facility users may not occupy a facility past an established check-out time unless it is determined that the facility is not needed for incoming visitors.

1.07 Wildlife within a park is protected and may not be harmed, harassed, caught, possessed, removed, or hunted except by permit.

1.08 Plants, trees and dead wood are protected and may not be damaged or removed from a park.

1.09 Fires may be built only in camp stoves or fireplaces. Firewood may not be gathered unless authorized by the Superintendent. Fireworks and explosives are not permitted.

1.10 Pets must be secured by a leash of six feet or less or confined. Pets other than seeing eye dogs are not permitted in public buildings or swimming areas. Horses may be ridden only in areas designated for that purpose. Noisy, vicious or dangerous animals are not permitted.

1.11 Loaded firearms are prohibited. Discharging a firearm or other hunting device is prohibited unless during authorized hunting by special permit or by law enforcement personnel.

# TEXAS PARKS & WILDLIFE

... a monthly magazine for every outdoorsman in the family.

Acclaimed for its color photography, the magazine explores state parks, takes you backpacking, canoeing, fishing, hunting and brings you up to date on what's happening in Texas' outdoors.

Already have a subscription? Share the beauty of Texas with someone else; give them a gift of TEXAS PARKS & WILDLIFE magazine.

(Use order blank on reverse side)

- 4.01 Swimming is restricted to designated areas and daylight hours. Water skiing, similar activities and operating a motorized ski device on lakes or less than 650 surface acres located in a State park are prohibited.
- 4.02 Boats may be docked only at designated mooring areas between 10 p.m. and 8 a.m., except by permit.
- 4.03 Glass containers are not permitted in the water or, on the beach adjacent to, a swimming area.
- 3.01 Campers must obtain a camping permit (1.04) and not exceed the established limit for the number of persons and the type and number of vehicles and equipment at the facility (1.05), and may camp only in a facility designated for that purpose.
- 3.02 Continuous occupancy of camping facilities by the same person or group is limited to 14 consecutive calendar days, unless an alternate time limit has been established or unless the occupied facility is not needed for incoming park visitors.
- 3.03 Persons under 18 years of age may stay overnight only if they are accompanied by parent or legal guardian or with his/her written permission, or if a group supervised by a responsible adult for each 15 persons under 18 years of age.
- 3.04 Noise may not be broadcast into the camp or sleeping quarters of another visitor between 10:00 p.m. and 6:00 a.m. Electronic broadcasts must be confined to the camp or picnic area of the person creating the sounds at all times. Excessive noise and disturbing conduct are prohibited.
- 2.01 Speed limits on park roads may not be exceeded. Speed may not be excessive for the conditions.
- 2.02 Vehicles may not be operated except upon roads and parking areas open to vehicles.
- 2.03 Vehicles and trailers must be parked only in parking areas designated, constructed or designated for parking.
- 2.04 Two and three-wheeled motorized vehicles must be equipped with an unmodified street legal muffler and a U.S. Forest Service/U.S.D.A. approved spark arrester/exhaust system. They may be operated only in areas designated for their use and at posted times. A street-legal bike may be operated by a licensed operator on park roads open to vehicular traffic. Indiscriminate operation of vehicles is prohibited. Pedestrians, bicycles and horses are prohibited from using mini-bike trails.
- 2.05 Use of a motor vehicle or bicycle on a pedestrian trail is prohibited. Vehicle traffic between the park closing hour and 6 a.m. is for emergency or necessary purposes only. Indiscriminate traffic in camping areas is prohibited.
- 2.06 Necessary purposes only. Indiscriminate traffic in camping areas is prohibited.
- 1.12 During posted closing hours, unauthorized persons may not enter or remain in a park.
- 1.13 An assembly or a demonstration may be held only after written authorization.
- 1.14 Public nudity or disrobing is prohibited.
- 1.15 When notice is posted declaring an area or facility closed to public entry or use, unauthorized persons may not enter or remain in the closed area.
- 1.16 No alcoholic beverages may be sold or publicly consumed.
- 1.17 Solicitation of funds, distribution of circulars, and the sale or offer of sale of any item may be done only after a permit or written concession contract has been issued.
- 1.18 Use of metal detectors is prohibited.
- 1.19 Adults may not permit a minor under their supervision to violate these rules.
- 1.20 A vehicle or other property that is abandoned or unattended and creating a hazardous or unsafe condition, or in an unauthorized place is subject to removal, impoundment or sale, as provided by law.

# TEXAS PARKS & WILDLIFE

TEXAS PARKS & WILDLIFE MAGAZINE  
4200 Smith School Road  
Austin, Texas 78744

\$ 8.	1 yr.
\$15.	2 yr.
(Including APO & FPO)	
\$10	Foreign Subscriptions
\$18	1 yr.
	2 yr.

• ALLOW SIX WEEKS FOR DELIVERY •

Name \_\_\_\_\_

Street or Box \_\_\_\_\_

City \_\_\_\_\_

State \_\_\_\_\_

Zip \_\_\_\_\_

Payment enclosed  
 Bill me later  
or call 1-800-792-1112

NEW  
 RENEWAL

### RESERVATIONS

ALL FEES SUBJECT TO CHANGE WITHOUT NOTICE.

Reservations for the Texas State Railroad may be made in person, by mail or telephone. Reservations made 10 days or more in advance require a deposit in the amount of the tickets requested. If a reservation is cancelled 24 hours or more prior to train departure, the deposit will be refunded; otherwise, the reservation fee will be forfeited. Train reservations made less than 10 days in advance do not require a deposit; however, tickets must be claimed at least one hour before train departure. All unclaimed tickets will be sold on a first-come, first-served basis one hour before train departure. Train reservations may be made daily 8 a.m.-5 p.m. by calling toll free (Texas only) 1-800/442-8951.

(Child rate applicable to 3 years through 12 years)

Reservations for park facilities will be accepted daily at the park headquarters where the facility is located by mail, telephone or in person between the hours of 8:00 a.m. to 5:00 p.m.

1. Reservations for cabins, screened shelters and campsites cannot be made more than 90 days in advance of occupancy date.

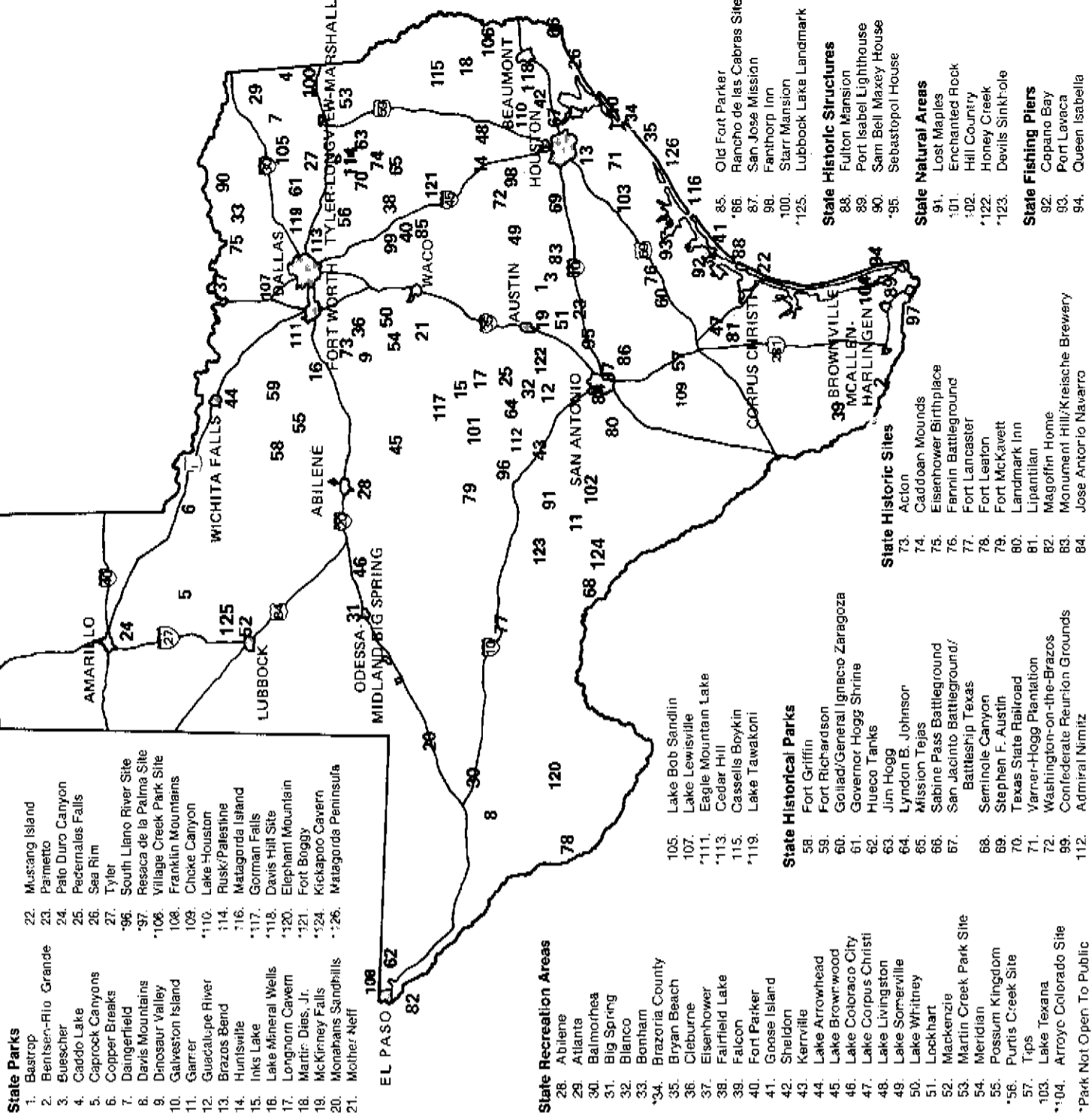
2. Reservations for cabins, screened shelters and campsites require a reservation fee for each facility reserved in an amount equal to a one day's fee for the type of facility reserved. Reservations made by telephone will be held five days pending receipt of required reservation fees. If the reservation fee has not been received after five days, the reservation request will be cancelled.

3. All reservation fees will be applied to the total amount due at the time of registration. If a reservation or any part of a reservation is cancelled 72 hours or more prior to arrival date, the reservation fee will be refunded; otherwise the reservation fee will be forfeited.

4. Reservations with no fee will be cancelled at 5:00 p.m. on arrival date unless late arrival privileges have been confirmed by the park. Persons requesting late arrival privileges must call the park headquarters either on the day of arrival or the day before during the hours 8:00 a.m. to 5:00 p.m.

5. Reservations for campsites are made according to the type requested with adequate space necessary to accommodate eight persons and a combination of motor vehicles and trailers not to exceed two (2). (Excludes Enclosed Campsites.) Reservations for screened shelters are made according to occupancy (is also limited to eight persons; however, the use of certain types of motor vehicles and/or camping equipment at shelters may be restricted. Persons making requests for screened shelters should ask park staff for more details.)

6. Reservations for campsites are made according to the type requested with adequate space necessary to accommodate eight persons and a combination of motor vehicles and trailers not to exceed two (2). (Excludes Enclosed Campsites.) Reservations for screened shelters are made according to occupancy (is also limited to eight persons; however, the use of certain types of motor vehicles and/or camping equipment at shelters may be restricted. Persons making requests for screened shelters should ask park staff for more details.)



- #### State Parks
1. Bearpaw Island
  2. Benis-en-Rio Grande
  3. Buescher
  4. Caddo Lake
  5. Caprock Canyons
  6. Copper Breaks
  7. Daingerfield
  8. Davis Mountains
  9. Dinosaur Valley
  10. Galveston Island
  11. Garner
  12. Guadalupe River
  13. Brazos Bend
  14. Huntsville
  15. Inks Lake
  16. Lake Mineral Wells
  17. Longhorn Cavern
  18. Martin Dies, Jr.
  19. McKinney Falls
  20. Monahans Sandhills
  21. Mother Neff

- #### State Recreation Areas
28. Abilene
  29. Atlanta
  30. Balmorhea
  31. Big Spring
  32. Blanco
  33. Bonham
  34. Brazoria County
  35. Bryan Beach
  36. Cleburne
  37. Eisenhower
  38. Fairfield Lake
  39. Falcon
  40. Fort Parker
  41. Goose Island
  42. Sheldon
  43. Kerrville
  44. Lake Arrowhead
  45. Lake Brownwood
  46. Lake Cottraco City
  47. Lake Corpus Christi
  48. Lake Livingston
  49. Lake Somerville
  50. Lake Whitney
  51. Lockhart
  52. Mackenzie
  53. Martin Creek Park Site
  54. Meridian
  55. Possum Kingdom
  56. Purvis Creek Site
  57. Tips
  103. Lake Texana
  104. Arroyo Colorado Site

- #### State Historic Sites
73. Aclon
  74. Caddoan Mounds
  75. Eisenhower Birthplace
  76. Fannin Battleground
  77. Fort Lancaster
  78. Fort Leaton
  79. Fort McKavett
  80. Landmark Inn
  81. Llanitan
  82. Magoffin Home
  83. Monument Hill/Kreische Brewery
  84. Jose Antonio Navarro

- #### State Historical Parks
58. Fort Griffin
  59. Fort Richardson
  60. Goliad/General Ignacio Zaragoza
  61. Governor Hogg Shrine
  62. Hueco Tanks
  63. Jim Hogg
  64. Lyndon B. Johnson
  65. Mission Tejas
  66. Sabine Pass Battleground
  67. San Jacinto Battleground/Battleship Texas

- #### State Natural Areas
91. Lost Maples
  92. Enchanted Rock
  93. Hill Country
  94. Honey Creek
  95. Devils Sinkhole

- #### State Fishing Piers
92. Copano Bay
  93. Port Lavaca
  94. Queen Isabella

- #### State Historic Structures
85. Old Fort Parker
  86. Rancho de las Cabras Site
  87. San Jose Mission
  88. Fannin House
  89. Starr Mansion
  90. Lubbock Lake Landmark
  91. Lubbock Lake Landmark

- #### State Historic Sites
73. Aclon
  74. Caddoan Mounds
  75. Eisenhower Birthplace
  76. Fannin Battleground
  77. Fort Lancaster
  78. Fort Leaton
  79. Fort McKavett
  80. Landmark Inn
  81. Llanitan
  82. Magoffin Home
  83. Monument Hill/Kreische Brewery
  84. Jose Antonio Navarro

- #### State Historical Parks
58. Fort Griffin
  59. Fort Richardson
  60. Goliad/General Ignacio Zaragoza
  61. Governor Hogg Shrine
  62. Hueco Tanks
  63. Jim Hogg
  64. Lyndon B. Johnson
  65. Mission Tejas
  66. Sabine Pass Battleground
  67. San Jacinto Battleground/Battleship Texas

- #### State Natural Areas
91. Lost Maples
  92. Enchanted Rock
  93. Hill Country
  94. Honey Creek
  95. Devils Sinkhole

- #### State Fishing Piers
92. Copano Bay
  93. Port Lavaca
  94. Queen Isabella

- #### State Historic Structures
85. Old Fort Parker
  86. Rancho de las Cabras Site
  87. San Jose Mission
  88. Fannin House
  89. Starr Mansion
  90. Lubbock Lake Landmark
  91. Lubbock Lake Landmark

- #### State Historic Sites
73. Aclon
  74. Caddoan Mounds
  75. Eisenhower Birthplace
  76. Fannin Battleground
  77. Fort Lancaster
  78. Fort Leaton
  79. Fort McKavett
  80. Landmark Inn
  81. Llanitan
  82. Magoffin Home
  83. Monument Hill/Kreische Brewery
  84. Jose Antonio Navarro

- #### State Historical Parks
58. Fort Griffin
  59. Fort Richardson
  60. Goliad/General Ignacio Zaragoza
  61. Governor Hogg Shrine
  62. Hueco Tanks
  63. Jim Hogg
  64. Lyndon B. Johnson
  65. Mission Tejas
  66. Sabine Pass Battleground
  67. San Jacinto Battleground/Battleship Texas

- #### State Natural Areas
91. Lost Maples
  92. Enchanted Rock
  93. Hill Country
  94. Honey Creek
  95. Devils Sinkhole

- #### State Fishing Piers
92. Copano Bay
  93. Port Lavaca
  94. Queen Isabella

- #### State Historic Structures
85. Old Fort Parker
  86. Rancho de las Cabras Site
  87. San Jose Mission
  88. Fannin House
  89. Starr Mansion
  90. Lubbock Lake Landmark
  91. Lubbock Lake Landmark

- #### State Historic Sites
73. Aclon
  74. Caddoan Mounds
  75. Eisenhower Birthplace
  76. Fannin Battleground
  77. Fort Lancaster
  78. Fort Leaton
  79. Fort McKavett
  80. Landmark Inn
  81. Llanitan
  82. Magoffin Home
  83. Monument Hill/Kreische Brewery
  84. Jose Antonio Navarro

- #### State Historical Parks
58. Fort Griffin
  59. Fort Richardson
  60. Goliad/General Ignacio Zaragoza
  61. Governor Hogg Shrine
  62. Hueco Tanks
  63. Jim Hogg
  64. Lyndon B. Johnson
  65. Mission Tejas
  66. Sabine Pass Battleground
  67. San Jacinto Battleground/Battleship Texas

- #### State Natural Areas
91. Lost Maples
  92. Enchanted Rock
  93. Hill Country
  94. Honey Creek
  95. Devils Sinkhole

- #### State Fishing Piers
92. Copano Bay
  93. Port Lavaca
  94. Queen Isabella

- #### State Historic Structures
85. Old Fort Parker
  86. Rancho de las Cabras Site
  87. San Jose Mission
  88. Fannin House
  89. Starr Mansion
  90. Lubbock Lake Landmark
  91. Lubbock Lake Landmark

- #### State Historic Sites
73. Aclon
  74. Caddoan Mounds
  75. Eisenhower Birthplace
  76. Fannin Battleground
  77. Fort Lancaster
  78. Fort Leaton
  79. Fort McKavett
  80. Landmark Inn
  81. Llanitan
  82. Magoffin Home
  83. Monument Hill/Kreische Brewery
  84. Jose Antonio Navarro

- #### State Historical Parks
58. Fort Griffin
  59. Fort Richardson
  60. Goliad/General Ignacio Zaragoza
  61. Governor Hogg Shrine
  62. Hueco Tanks
  63. Jim Hogg
  64. Lyndon B. Johnson
  65. Mission Tejas
  66. Sabine Pass Battleground
  67. San Jacinto Battleground/Battleship Texas

- #### State Natural Areas
91. Lost Maples
  92. Enchanted Rock
  93. Hill Country
  94. Honey Creek
  95. Devils Sinkhole

- #### State Fishing Piers
92. Copano Bay
  93. Port Lavaca
  94. Queen Isabella

- #### State Historic Structures
85. Old Fort Parker
  86. Rancho de las Cabras Site
  87. San Jose Mission
  88. Fannin House
  89. Starr Mansion
  90. Lubbock Lake Landmark
  91. Lubbock Lake Landmark

- #### State Historic Sites
73. Aclon
  74. Caddoan Mounds
  75. Eisenhower Birthplace
  76. Fannin Battleground
  77. Fort Lancaster
  78. Fort Leaton
  79. Fort McKavett
  80. Landmark Inn
  81. Llanitan
  82. Magoffin Home
  83. Monument Hill/Kreische Brewery
  84. Jose Antonio Navarro

- #### State Historical Parks
58. Fort Griffin
  59. Fort Richardson
  60. Goliad/General Ignacio Zaragoza
  61. Governor Hogg Shrine
  62. Hueco Tanks
  63. Jim Hogg
  64. Lyndon B. Johnson
  65. Mission Tejas
  66. Sabine Pass Battleground
  67. San Jacinto Battleground/Battleship Texas

- #### State Natural Areas
91. Lost Maples
  92. Enchanted Rock
  93. Hill Country
  94. Honey Creek
  95. Devils Sinkhole

- #### State Fishing Piers
92. Copano Bay
  93. Port Lavaca
  94. Queen Isabella

- #### State Historic Structures
85. Old Fort Parker
  86. Rancho de las Cabras Site
  87. San Jose Mission
  88. Fannin House
  89. Starr Mansion
  90. Lubbock Lake Landmark
  91. Lubbock Lake Landmark

- #### State Historic Sites
73. Aclon
  74. Caddoan Mounds
  75. Eisenhower Birthplace
  76. Fannin Battleground
  77. Fort Lancaster
  78. Fort Leaton
  79. Fort McKavett
  80. Landmark Inn
  81. Llanitan
  82. Magoffin Home
  83. Monument Hill/Kreische Brewery
  84. Jose Antonio Navarro

- #### State Historical Parks
58. Fort Griffin
  59. Fort Richardson
  60. Goliad/General Ignacio Zaragoza
  61. Governor Hogg Shrine
  62. Hueco Tanks
  63. Jim Hogg
  64. Lyndon B. Johnson
  65. Mission Tejas
  66. Sabine Pass Battleground
  67. San Jacinto Battleground/Battleship Texas

- #### State Natural Areas
91. Lost Maples
  92. Enchanted Rock
  93. Hill Country
  94. Honey Creek
  95. Devils Sinkhole

- #### State Fishing Piers
92. Copano Bay
  93. Port Lavaca
  94. Queen Isabella

- #### State Historic Structures
85. Old Fort Parker
  86. Rancho de las Cabras Site
  87. San Jose Mission
  88. Fannin House
  89. Starr Mansion
  90. Lubbock Lake Landmark
  91. Lubbock Lake Landmark

- #### State Historic Sites
73. Aclon
  74. Caddoan Mounds
  75. Eisenhower Birthplace
  76. Fannin Battleground
  77. Fort Lancaster
  78. Fort Leaton
  79. Fort McKavett
  80. Landmark Inn
  81. Llanitan
  82. Magoffin Home
  83. Monument Hill/Kreische Brewery
  84. Jose Antonio Navarro

- #### State Historical Parks
58. Fort Griffin
  59. Fort Richardson
  60. Goliad/General Ignacio Zaragoza
  61. Governor Hogg Shrine
  62. Hueco Tanks
  63. Jim Hogg
  64. Lyndon B. Johnson
  65. Mission Tejas
  66. Sabine Pass Battleground
  67. San Jacinto Battleground/Battleship Texas

- #### State Natural Areas
91. Lost Maples
  92. Enchanted Rock
  93. Hill Country
  94. Honey Creek
  95. Devils Sinkhole

- #### State Fishing Piers
92. Copano Bay
  93. Port Lavaca
  94. Queen Isabella

- #### State Historic Structures
85. Old Fort Parker
  86. Rancho de las Cabras Site
  87. San Jose Mission
  88. Fannin House
  89. Starr Mansion
  90. Lubbock Lake Landmark
  91. Lubbock Lake Landmark

- #### State Historic Sites
73. Aclon
  74. Caddoan Mounds
  75. Eisenhower Birthplace
  76. Fannin Battleground
  77. Fort Lancaster
  78. Fort Leaton
  79. Fort McKavett
  80. Landmark Inn
  81. Llanitan
  82. Magoffin Home
  83. Monument Hill/Kreische Brewery
  84. Jose Antonio Navarro

- #### State Historical Parks
58. Fort Griffin
  59. Fort Richardson
  60. Goliad/General Ignacio Zaragoza
  61. Governor Hogg Shrine
  62. Hueco Tanks
  63. Jim Hogg
  64. Lyndon B. Johnson
  65. Mission Tejas
  66. Sabine Pass Battleground
  67. San Jacinto Battleground/Battleship Texas

- #### State Natural Areas
91. Lost Maples
  92. Enchanted Rock
  93. Hill Country
  94. Honey Creek
  95. Devils Sinkhole

- #### State Fishing Piers
92. Copano Bay
  93. Port Lavaca
  94. Queen Isabella

- #### State Historic Structures
85. Old Fort Parker
  86. Rancho de las Cabras Site
  87. San Jose Mission
  88. Fannin House
  89. Starr Mansion
  90. Lubbock Lake Landmark
  91. Lubbock Lake Landmark

- #### State Historic Sites
73. Aclon
  74. Caddoan Mounds
  75. Eisenhower Birthplace
  76. Fannin Battleground
  77. Fort Lancaster
  78. Fort Leaton
  79. Fort McKavett
  80. Landmark Inn
  81. Llanitan
  82. Magoffin Home
  83. Monument Hill/Kreische Brewery
  84. Jose Antonio Navarro

- #### State Historical Parks
58. Fort Griffin
  59. Fort Richardson
  60. Goliad/General Ignacio Zaragoza
  61. Governor Hogg Shrine
  62. Hueco Tanks
  63. Jim Hogg
  64. Lyndon B. Johnson
  65. Mission Tejas
  66. Sabine Pass Battleground
  67. San Jacinto Battleground/Battleship Texas

- #### State Natural Areas
91. Lost Maples
  92. Enchanted Rock
  93. Hill Country
  94. Honey Creek
  95. Devils Sinkhole

- #### State Fishing Piers
92. Copano Bay
  93. Port Lavaca
  94. Queen Isabella

- #### State Historic Structures
85. Old Fort Parker
  86. Rancho de las Cabras Site
  87. San Jose Mission
  88. Fannin House
  89. Starr Mansion
  90. Lubbock Lake Landmark
  91. Lubbock Lake Landmark

- #### State Historic Sites
73. Aclon
  74. Caddoan Mounds
  75. Eisenhower Birthplace
  76. Fannin Battleground
  77. Fort Lancaster
  78. Fort Leaton
  79. Fort McKavett
  80. Landmark Inn
  81. Llanitan
  82. Magoffin Home
  83. Monument Hill/Kreische Brewery
  84. Jose Antonio Navarro

- #### State Historical Parks
58. Fort Griffin
  59. Fort Richardson
  60. Goliad/General Ignacio Zaragoza
  61. Governor Hogg Shrine
  62. Hueco Tanks
  63. Jim Hogg
  64. Lyndon B. Johnson
  65. Mission Tejas
  66. Sabine Pass Battleground
  67. San Jacinto Battleground/Battleship Texas

- #### State Natural Areas
91. Lost Maples
  92. Enchanted Rock
  93. Hill Country
  94. Honey Creek
  95. Devils Sinkhole

- #### State Fishing Piers
92. Copano Bay
  93. Port Lavaca
  94. Queen Isabella

- #### State Historic Structures
85. Old Fort Parker
  86. Rancho de las Cabras Site
  87. San Jose Mission
  88. Fannin House
  89. Starr Mansion
  90. Lubbock Lake Landmark
  91. Lubbock Lake Landmark

- #### State Historic Sites
73. Aclon
  74. Caddoan Mounds
  75. Eisenhower Birthplace
  76. Fannin Battleground
  77. Fort Lancaster
  78. Fort Leaton
  79. Fort McKavett
  80. Landmark Inn
  81. Llanitan
  82. Magoffin Home
  83. Monument Hill/Kreische Brewery
  84. Jose Antonio Navarro

- #### State Historical Parks
58. Fort Griffin
  59. Fort Richardson
  60. Goliad/General Ignacio Zaragoza
  61. Governor Hogg Shrine
  62. Hueco Tanks
  63. Jim Hogg
  64. Lyndon B. Johnson
  65. Mission Tejas
  66. Sabine Pass Battleground
  67. San Jacinto Battleground/Battleship Texas

- #### State Natural Areas
91. Lost Maples
  92. Enchanted Rock
  93. Hill Country
  94. Honey Creek
  95. Devils Sinkhole

- #### State Fishing Piers
92. Copano Bay
  93. Port Lavaca
  94. Queen Isabella

- #### State Historic Structures
85. Old Fort Parker
  86. Rancho de las Cabras Site
  87. San Jose Mission
  88. Fannin House
  89. Starr Mansion
  90. Lubbock Lake Landmark
  91. Lubbock Lake Landmark

- #### State Historic Sites
73. Aclon
  74. Caddoan Mounds
  75. Eisenhower Birthplace
  76. Fannin Battleground
  77. Fort Lancaster
  78. Fort Leaton
  79. Fort McKavett
  80. Landmark Inn
  81. Llanitan
  82. Magoffin Home
  83. Monument Hill/Kreische Brewery
  84. Jose Antonio Navarro

- #### State Historical Parks
58. Fort Griffin
  59. Fort Richardson
  60. Goliad/General Ignacio Zaragoza
  61. Governor Hogg Shrine
  62. Hueco Tanks
  63. Jim Hogg
  64. Lyndon B. Johnson
  65. Mission Tejas
  66. Sabine Pass Battleground
  67. San Jacinto Battleground/Battleship Texas

- #### State Natural Areas
91. Lost Maples
  92. Enchanted Rock
  93. Hill Country
  94. Honey Creek
  95. Devils Sinkhole

- #### State Fishing Piers
92. Copano Bay
  93. Port Lavaca
  94. Queen Isabella

- #### State Historic Structures
85. Old Fort Parker
  86. Rancho de las Cabras Site
  87. San Jose Mission
  88. Fannin House
  89. Starr Mansion
  90. Lubbock Lake Landmark
  91. Lubbock Lake Landmark

- #### State Historic Sites
73. Aclon
  74. Caddoan Mounds
  75. Eisenhower Birthplace
  76. Fannin Battleground
  77. Fort Lancaster
  78. Fort Leaton
  79. Fort McKavett
  80. Landmark Inn
  81. Llanitan
  82. Magoffin Home
  83. Monument Hill/Kreische Brewery
  84. Jose Antonio Navarro

- #### State Historical Parks
58. Fort Griffin
  59. Fort Richardson
  60. Goliad/General Ignacio Zaragoza
  61. Governor Hogg Shrine
  62. Hueco Tanks
  63. Jim Hogg
  64. Lyndon B. Johnson
  65. Mission Tejas
  66. Sabine Pass Battleground
  67. San Jacinto Battleground/Battleship Texas

- #### State Natural Areas
91. Lost Maples
  92. Enchanted Rock
  93. Hill Country
  - 9







# Texas House of Representatives



P.O. Box 2910  
Austin, Texas 78769-2910  
(512) 463-0582

108 Lakeland Plaza  
Lewisville, Texas 75067  
(214) 221-2773  
Denton: (817) 566-4720

STATE REPRESENTATIVE

*Jim Horn*

March 6, 1989

Ms. Jo Ann Ballantine  
Denton Chamber of Commerce  
P.O. Drawer P  
Denton, Texas 76202

Dear Jo Ann:

Thank you for stopping by my office in the Capitol. I am sorry that I missed you. I was in committee meetings for HB1 all day. I did enjoy the Denton County Day activities that I was able to attend. It is always a pleasure to visit with my constituents when they are in Austin.

I share your interest and support for the Jones Farm project on Lake Ray Roberts. This is a fantastic opportunity for us to pursue a living example of our heritage.

Thanks again for letting me know your views on this issue. If I can be of further service to you, please let me know.

Sincerely,

Jim Horn  
State Representative  
District 59

JH/dw

Directions to Jones Farm -

922 to 372 South

left on Reason Jones Rd.

Zillaboy - Isle du Bois

Stan Ray

Cong. Stenholm

202-225-6605

Jones Farm

---

Mike Cochran - 387-0995

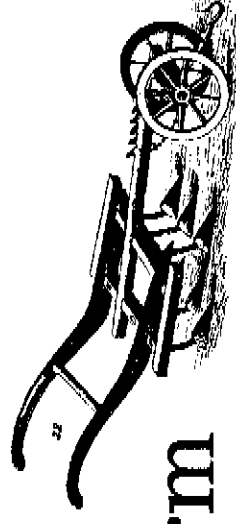
Quang Hays - 665-4854

Yvonne Jenkins - 383-8073

# Friends of the Jones Farm

A Newsletter for Friends and Acquaintances of the Jones Farm

February 1989



## Friends Group Organized

The Friends of the Jones officially got off the ground on Saturday, January 7, at our organizational meeting held at the Valley View Community Center. There were about 40 persons in attendance including Mayor Ray Stephens, of Denton; Lyle Dresher, City Manager of Gainesville; Mr. Roy Jones of Pilot Point; and representatives of various historical and civic organizations from both Cooke and Denton Counties.

The first order of business was the election of officers which was attended to in record time. Margaret P. Hays, of the Cooke County Historical Commission, was elected Chairman by acclamation; Mike Cochran, of the City of Denton, Historic Landmark Commission and the Historical Society of Denton County was elected Vice-Chairman; Ruth Marshall of Sanger, Secretary; and Louis Stephenson of Gainesville was elected Treasurer.

A discussion followed on the possibility of forming a loose affiliation with the Historical Society of Denton County for the purpose of attaining immediate tax exempt status for donations to the Jones Farm group. Donations to the Friends of the Jones Farm have been encouraging. Thanks to the generous contribution of \$500. from one history lover, our treasury has more than \$700 in it.

In other business, it was decided to join The Association for Living Historical Farms and Agricultural Museums. Membership in this organization will provide our group with contacts in the nationwide "living history farm museum" community. Not only will they be able to provide us with basic information through their bimonthly newsletter, the *Bulletin*, but their advice might also help us in our efforts to have the Jones farm become a "living history farm museum".

Dues for membership in the Friends of the Jones Farm were set at \$3. This was intentionally kept low to encourage membership and because at the present our expenses are low. (Elsewhere in this newsletter you will find a membership application form.)

It was mentioned at the meeting and cannot be said enough, that the decision as to the fate of the

Jones Farm will be made by the Texas Parks and Wildlife Department in the next several months. They have already publicly stated that they will do "something" with the Jones Farm. But "something" could mean anything from just having a low intensity interpretive center on up to the highly developed "living history farm museum" that we advocate.

If we, as a group are to have any impact at all, it will be in the next 6 to 8 weeks. It is imperative that each of you make your feelings known about the Jones Farm to those persons that will make this important decision. It boils down to this: it's now or never. (See "Where to Write" on p. 3)

All in all it was a great meeting and a pleasure to meet with so many people that represent the different organizations which have come together to support the Jones Farm.

## A.L.H.F.A.M.

### The Association for Living Historical Farms and Agricultural Museums

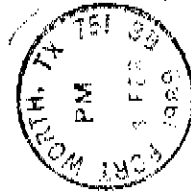
Since we are now officially members of ALHFAM I thought it might be a good idea to explain a little bit about that organization and how it might help us in our efforts to have the Jones Farm designated as a living history farm museum.

ALHFAM was founded in 1970 as an organization to provide a forum for communication for professionals and enthusiasts interested in living historical farms and outdoor museums of history and folklore.

Among the benefits of belonging to this organization are the contact with others currently active in this field so that we might learn from their experiences. The organization encourages research, presentation and publication on historical agriculture, rural society, folklore and the farm environment.

Another benefit is a list of sources of live-stock, plantstock, skills and processes for use in living history farms. And, the bimonthly *Bulletin* will keep us informed of doings in the living history farm world.

Friends of the Jones Farm  
1301 E. Pecan  
Gainesville, Texas 76240



Chuck Carpenter, Director  
Denton Chamber of Commerce  
Denton, Texas 76201

## J. F. Organization Support

One thing that has been encouraging about trying to promote a state living history farm museum at the Jones Farm is the fact that support has been so freely given from so many different groups representing such wide variety of interests. Organizations and groups that normally might not have much in common have rallied around the idea of the Jones Farm operating again in the Johnson Branch Park.

We have received resolutions of support from many organizations and area political entities and more are coming in every week. To date we have resolutions of support from:

- Denton County
- Cooke County
- The City of Denton
- The City of Gainesville
- The City of Pilot Point
- The Mountain Springs Community Club.

In addition, we have received letters of support from:

- Gainesville I.S.D.
- Denton I.S.D.
- The Historical Society of Denton County
- The City of Denton, Hist. Landmark Comm.
- The Cooke County Heritage Society

As we move forward more letters and resolutions are coming in all the time. If you belong to an organization whose members might be interested in the Jones Farm, why don't you bring it up at your next meeting. (See sample provide on this page) The more official letters of support we have for our cause serve to demonstrate how committed the north Texas community is to the establishment of this museum.

*The Friends of the Jones Farm*  
Chairman - Margaret Hays  
(817) 668-4854  
Vice Chairman and Newsletter Editor  
Mike Cochran  
609 W. Oak St.  
Denton, Texas 76201  
(817) 387-0995  
Treasurer - Louis Stephenson  
1218 Hillside  
Gainesville, Texas 76240  
Secretary - Ruth Marshall  
Sanger, Texas

A non-profit organization dedicated to the creation of a state living history farm at the Jones Farm site on Ray Roberts Lake and to the study of agricultural history in the North Texas region.

## Sample Resolution

Resolution in Support of the Establishment of a Jones Farm Living History Center at Johnson Branch Park Ray Roberts Lake Denton County, Texas.

WHEREAS, The Texas Parks and Wildlife Department is currently considering the placement of a new "living history farm" at the Roy Jones Farm site on Ray Roberts Lake, Denton County, Texas.

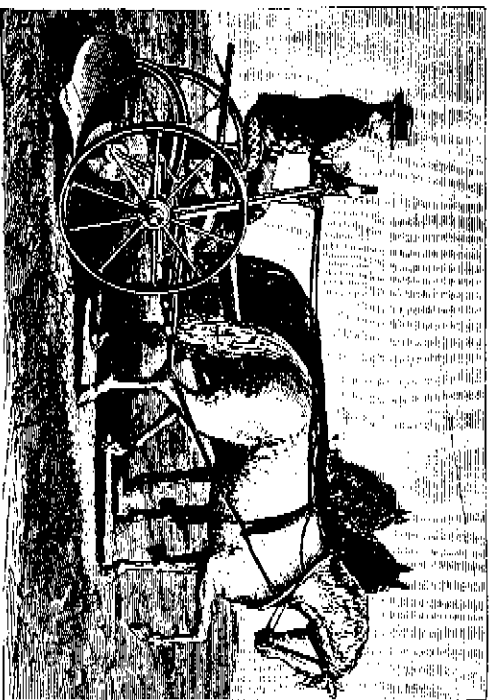
WHEREAS, the development of this site as a "living history farm" would have a positive economic impact on Denton, Cooke and Grayson counties by providing jobs and increasing tourism.

WHEREAS, the culture and history of north Texas are unique and worthy of preservation. The creation of a Jones Farm Living History Center would help to preserve and document the agricultural nature of our region's history so that those who follow us can learn about their past and profit from that knowledge.

WHEREAS, with an increasing emphasis on the study of state and local history in our schools and a lack of living history farms in our area, the establishment of a Jones Farm Living History Center would be of great benefit to the 56,000 public school children Denton, Cooke and Grayson counties.

NOW, THEREFORE, BE IT RESOLVED THAT  
The \_\_\_\_\_ unanimously and wholeheartedly lends its support to the creation of a "living history farm" at the Jones homestead, Johnson Branch Park in north Denton County.

Passed and approved on this \_\_\_\_ day of \_\_\_\_\_, 1989



## Mountain Springs Meeting a Success

On November 30th, a meeting was held at the Mountain Springs Community Center of the citizens interested in the fate of the Roy Jones Farm. The meeting was called by Margaret Hays of Gainesville and Mike Cochran of Denton to bring together those persons interested in helping to demonstrate to the Parks Department and the U.S. Army Corps of Engineers that there is active local support for the project.

By all accounts the meeting was a huge success and what had originally been planned as a small meeting of 6 or 7 individuals, grew and kept growing until there were almost 100 people that showed up on that fine fall day to ask questions and to show their support for the Jones Farm.

Not only did the ladies of the Mountain Springs Community Club provide coffee and an assortment of mouth-watering home-made breads for the event, but they were kind enough to allow their weekly quilting session to be interrupted as well.

The mixed group heard presentations from Karen Scott, archeologist from the U.S. Army Corps of Engineers, Mr. Michael Moeck, Chief of the Planning Division of the Corps, Dr. Reid Ferring, archeologist from the University of North Texas and Principal Investigator for the entire lake project. Mr. Michael Herring from the Texas Parks & Wildlife Department spoke about the potential involvement of his organization on the Jones Farm project and outlined several of the options being considered.

The high-point of the meeting was when Mr. Roy Jones, recently of Pilot Point, entered the meeting hall and received a standing ovation from the appreciative crowd. The 90 year old Mr. Jones had lived almost his whole life at the Jones Farm site until the land was purchased by the Corps in 1984.

The most pertinent piece of information that came from the government representatives was that the Jones Farm would definitely be preserved by the Parks Department at some level. Prior to the meeting that had not been publicly established and some of



the fears of the assembled crowd were put to rest.

Before moving on to a tour of the Jones Farm, it was suggested by Yvonne Jenkins, of the Denton County Historical Museum, that a group of "Friends of the Jones Farm" be created for the purpose of directing local support for the project. By the time everyone had gotten out the door and loaded the Valley View school buses for the trip over to the farm, a borrowed cowboy hat had been filled with over \$64 in donations and there was a pledge for \$500 more.

At the well secured Jones Farm site the interested citizens were treated to tours of the grounds by U.N.T. archeologists Susan Lebo and Dr. Reid Ferring. The old Jones home and the several barns and out-buildings are beautifully situated on a hill overlooking Ray Roberts Lake.

Visiting the farm site you just can't help but think about all the great things that would be possible if the Jones Farm were to become a state living history farm. Most of the participants in the days activities left, invigorated, and ready to do what they could to encourage the success of the project.

## The Jones Family

The Jones family farmed their land for more than 100 years, arriving in Denton County in the late 1850's. Part of the great Tennessee to Texas migration of the period, John and Susan Belew Jones had 9 children, of whom Roy Jones is the youngest. They lived in another smaller house on the property before moving to the existing house when Roy, now 90, was a young boy.

A member of the Cross Timbers Genealogical Society is preparing a genealogy of the Jones family and by the next edition of this newsletter we should have more information on their interesting history.

## Bloomfield School Possibility

The Bloomfield School Committee at U.N.T. is discussing the possibility of the old Bloomfield School being moved to the Jones Farm site. There are many hurdles to jump before that might happen, but the subject is being discussed with the Corps.

## **-Where to Write-**

We have already mentioned the importance of writing to the decision makers of your support for the living history farm concept at the Jones Farm. The following are a list of the addresses you will need for your letters. They have all, by now, heard of our campaign so your letters just need to be short, sweet, and to the point. If you know any Austin political figures such as your state representative or senator, please remember to write to them too. They can be of big help in this decision.

Mr. Michael Mocek  
Chief of Planning  
SWF R-12  
U.S. Army Corps of Engineers  
P.O. Box 17300  
Ft. Worth, Texas 76201

Mr. Bill Dolman  
Director of Parks  
Texas Parks & Wildlife Department  
4200 Smith School Road  
Austin, Texas 78744

### **State Senators**

**22nd Senatorial District**  
Senator Bob Glasgow  
The State Senate  
P.O. Box 12068, Capitol Station  
Austin, Texas 87711

**30th Senatorial District**  
Senator Steven Carriker  
The State Senate  
P.O. Box 12068, Capitol Station  
Austin, Texas 87711

### **State Representatives**

**59th Representative District**  
Representative Jim Horn  
House of Representatives  
P.O. Box 2910, Capitol Station  
Austin, Texas 78769

**61st Representative District**  
Representative Richard F. Williamson  
House of Representatives  
P.O. Box 2910, Capitol Station  
Austin, Texas 78769

### **United States Representatives**

#### **26th Congressional District of Texas**

Representative Richard Armev  
House of Representatives  
514 Cannon House Office Bldg.  
Washington, D.C. 20515

#### **17th Congressional District**

Representative Charles Stenholm  
House of Representatives  
1232 Longworth House Office Bldg.  
Washington, D.C. 20515

## **Other Organizations**

One of the strengths of the Friends of the Jones Farm is diversity of the interests of our members. One service we can offer with our newsletter is to share information about the various other groups our members belong to. Below you will find a list of several of those organizations. This is not a complete list, by a long shot, so if you are a member of an organization that you think other Friends might be interested in, please drop a note to the editor and I'll try to include it in future editions of this publication.

The Cooke County Heritage Society  
P.O. Box 150  
Gainesville, Texas 76240  
Individual Membership - \$10.

The Historical Society of Denton County  
P.O. Box 2184  
Denton, Texas 76202  
Individual Membership - \$10

Cross Timbers Gencological Society  
P.O. Box 197  
Gainesville, Texas 76240

The Cooke County Antique Farm Machinery Club  
C/O Henry Hess, Jr. - President  
Rt. 4, Box 195  
Gainesville, Texas 76240  
Membership - \$5.

Lone Star Draft Horse and Mule Association  
Contact/ Weldon Faught  
419 Surveyors Road  
Aubrey, Texas 76227

# THE OLD FARM

134-year-old compound called historical treasure

By Toni Y. Joseph

Staff Writer of The Dallas Morning News

**CEDAR HILL** — Among the overgrowth of mesquite trees and a tangle of cedar saplings, high on a bluff above Joe Pool Lake, stand the ruins of Texas rural history.

The compound, cherished by architects, archaeologists and history buffs, is known as the Penn Farmstead, settled in 1854 by John Anderson Penn, an Illinois emigrant. The houses, barns, sheds and granaries were built during the 116 years that Penns lived and worked in southwest Dallas County.

"You can go to historical places where structures have been hauled in from other towns to display, but these are all in one place," said Daniel Prikryl, staff archaeologist with the Texas Historical Commission.

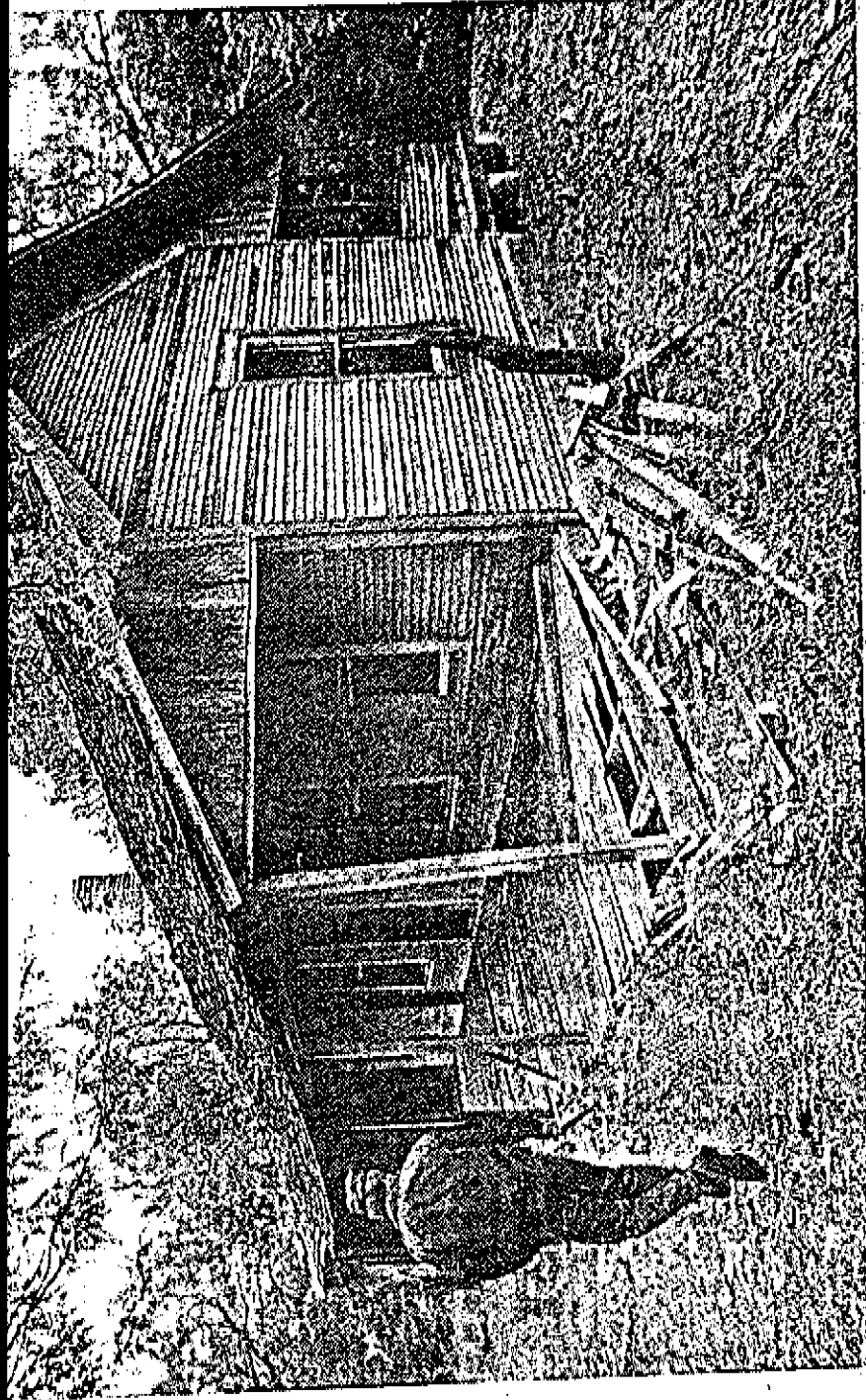
Together, the structures are a rare example of the evolution in farm architecture — a fact that has politicians and preservationists trying to save and develop the 1,100-acre property.

"There is very strong interest in the preservation and development of Penn Farm," said Donna Emerton, vice president of Friends of Penn Farm, a newly incorporated, private non-profit group formed to encourage volunteer restoration efforts.

In 1975, the U.S. Army Corps of Engineers bought the farmstead and surrounding fields for Joe Pool Lake. The fields have since been flooded, but the farmstead will eventually be incorporated into Cedar Hill State Park.

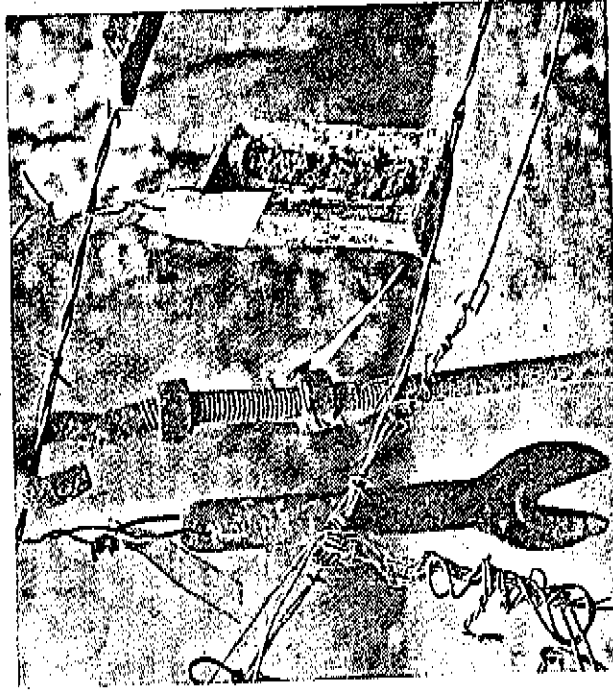
The corps is working out an agreement with the Texas Parks and Wildlife Commission in which the corps would provide about \$827,000 to stabilize the buildings against further deterioration and to plan how the site will be developed, said Ron Ruffennach, the corps' assistant public affairs officer.

But that sum is not adequate to restore



The Dallas Morning News: Paula Nelson

Ranger Don Quigley examines a house on the Penn farmstead that was built in 1859.



The Penn farmhouse near Cedar Hill is made of



Old tools found at the Penn farmstead have been

taught for identification.

# racing t is too h Harris may spur bill to reduce l

By Gayle Reaves

Staff Writer of The Dallas Morning News

State Sen. O.H. "Tke" Harris said that he would sponsor legislation that would reduce the Texas' 5 percent tax on pari-mutuel betting. Harris thought it had a chance of passing.

Pressure for such a change has been mounting for several recent months, as proposals for reforming pari-mutuel betting in neighboring tracks have languished.

The tax is cited as a major reason why firm track proposals have been defeated in the Dallas-Fort Worth area in the 11

## ■ Racing chief profiled.

Texas voters approved the return of pari-mutuel betting.

Harris said his objective would be to raise the capital needed to build major tracks in Texas by making the pari-mutuel betting more profitable and less risky for investors.

Harris, a Dallas Republican and former state legislator, said that he would not support the 1989 legislative session.

"It's one of those things that I would like to see Harris sponsor, but I don't think it will pass," Harris said. "It's a category of what's realistic. . . . It depends on what has to happen to the track."

Texas racing enthusiasts say the tax cut is too large to allow for the construction of tracks with big mortgages and a large body of fans. Some are suggesting a reduction to as low as 1 percent for the first few years of track operation.

According to New York gambler

Please see REDUCTION on Page 2.

## METRO REPORT

### Badly decomposed body discovered in creek bed

A decomposed body was found Sunday morning in the Pleasant Grove Creek bed, officials said. A field agent for the Dallas County medical examiner's office said that an initial examination showed the body may be that of a woman about 20 to 30 years old. However, the body was badly decomposed, and an autopsy was being performed to determine the sex, age and cause of death. Officials said a child found the fully-clothed body in the creek, near the 6300 block of Fairway Avenue, at 10:30 a.m. Sunday.

### Man, 21, wounded by stray gunfire from youth fight

A 21-year-old Dallas man was wounded early Sunday by gunfire as two groups of youths fought in the Love Field area, police said. Alvin Leos told police he was walking out of a fast-food restaurant in the 4300 block of Maple Avenue at about 1:10 a.m. Sunday when two cars stopped in front of him. Several male youths in one car got out and started throwing bottles at the other car. The male youths in the other car got out and began shooting, Leos told police. Leos said he was hit in the shoulder by one of the bullets, and he went to Parkland Memorial Hospital for treatment. He was released from the hospital early Sunday, officials said.

### DART service changes on 15 routes to begin today

Dallas Area Rapid Transit will alter service on 15 bus routes beginning Monday. The changes coincide with the opening of the new north Carrollton and south Irving transit centers, officials said. Among the changes, new service will be offered to Dallas/Fort Worth International Airport via Route 300, and new service to the hotels and businesses in the Freeport area near the airport will be available on Route 202. Other adjustments include the elimination of the West End Shuttle, the Oak Lawn Shuttle and the Oak Lawn Lunch Wagon. For more information, call DART Customer Assistance between 5 a.m. and 10 p.m. weekdays.

### Non-profit group to offer crime prevention clinic

The Inner City Development Corp., a community-based non-profit organization, in conjunction with the Texas Peace Officers Association, will offer a crime prevention clinic from 8:30 a.m. to 5 p.m. Saturday at Lincoln High School, 2826 Hatcher St. in South Dallas. Titled "We Want You to Be Safe," the clinic will feature addresses by Dallas Police Chief Mack Vines and Deputy Mayor Pro Tem Diane Ragsdale. The event will also include workshops on topics such as drug abuse prevention services, crimes against people and property and community crime prevention techniques. The clinic is free and open to the public.

## TRAFFIC REPORT

Interstate 35 — The Texas Department of Highways and Public Transportation will close eastbound lanes at various locations between Westmoreland Road and Beckley Avenue from 8:45 a.m. to sunset Monday for construction.  
North Central Expressway — No lane closures are scheduled Monday.  
Interstate 35E — One southbound lane between Merrell Road and LBJ Freeway will close from 8:45 a.m. to 3:45 p.m. Monday.

# Groups out to save 134-year-old farm

Continued from Page 19A.  
other force driving preservation efforts. The now fenced-in farm will be just around a bend or over a hilltop from several campsites and picnic areas. Supporters realize that once restored, the farm will make an educational attraction capable of drawing hundreds of thousands of visitors a year, said Erwin Roemer, staff archaeologist with the U.S. Army Corps of Engineers.  
"It's virtually guaranteed to have high attendance," Roemer said.

Roemer is optimistic because of attendance figures at similar exhibits and because 1,400 people descended on the property in 1985 for a volunteer cleanup and an amateur archaeological dig.  
Ms. Emerton, of Friends of Penn Farm, said that because of the site's abundance of artifacts and oral history, it would be an ideal field trip destination for the hundreds of thousands of area schoolchildren.

Artifacts show that the Penns were early practitioners of the yuppie art of renovation. Everything on the farm was used and used again, Roemer said.  
"They kept this farm going by using what was already there," he said. On a recent tour, Randall W. Moir, director of Southern Methodist University's Archaeology Research Program, pointed to numbered notches along an exterior wall of a barn crib.

Log by log, the Penns disassembled the building, hauled the components to a new spot, then reconstructed the entire building as a wing of the new barn. The numbered notches showed where each piece should be fitted in the reassembly.

Workers preparing the large old barn for preservation are as careful as the Penn family was. The building, probably the most expensive and fragile prospect for restoration, is being carefully photographed and detailed in drawings. Workers are tagging each board, each metal fitting.

Roemer said the building will be taken apart and treated to prevent further deterioration, then stored until funds are made available for its complete or partial restoration.

Today, reminders of rural life surround Lovell Penn. Pieces of solid hand-hewn oak, cedar and black walnut furniture decorate his home in the Cedar Hill flatlands, less than five miles from the family farmstead. Although Penn is blind, he easily points out the homemade wooden pegs that hold together a Shaker-style table. On display are a 125-year-old sewing machine and a student's bench from the school John Wesley Penn built in the 1870s to educate his and his neighbors' children.

When the farm is eventually used as a tour or demonstration facility,

supporters hope the surviving Penns will donate some of the mementos and share some of the memories for talks or for a cultural museum, Moir said.

Public records show that John Wesley Penn, Lovell's grandfather, died in June 1888, less than a day after a rattlesnake bit his wrist. Snakes still enjoy the farm's cool breezes and dense vegetation.

On a recent visit, a loud rattle could be heard near the porch of the original farmhouse, built in 1859. A half-dozen bright orange flags posted outside farm buildings now mark the location of snakebite first-aid kits. Rangers and volunteers try to discourage snakes by clearing the area of their hiding places.

Penn loves to tell tales about remaining farm objects and family habits. He tells how his grandmother would rid her chicken house of poisonous snakes by tricking the reptiles into swallowing whole a white, oval doorknob she substituted for a nest egg.

Unable to crush the doorknob with their strong stomach muscles, the snakes would get stuck as they tried to slither through holes beneath the roosts, Penn said.

"Their tails would be up in the building," Penn said. "Grandmother would come in and ax 'em. She'd just take out the nest egg and wash it off and use it the next time."

# Reduction in pari-mutuel tax favored

Continued from Page 19A.  
Eugene Christiansen.

The Texas Racing Commission

will flood plain and is owned by the city of Dallas.

the plan died when bankers who hold much of the debt burden on



# DENTON CONVENTION & VISITORS BUREAU

March 3, 1989

The Honorable Richard F. Williamson  
House of Representatives  
P.O. Box 2810, Capitol Station  
Austin, TX 78769

Dear Representative Williamson:

I am writing to ask you to support the Jones Farm project located on Ray Roberts Lake. I would like to see this effort become a living history farm museum not only for preserving our local heritage but to make it a point of interest for our out-of-state visitors.

Please help the Friends of the Jones Farm accomplish this very important mission.

Sincerely,



Jo Ann Ballantine  
Staff Director

JAB/jm

## -Where to Write-

We have already mentioned the importance of writing to the decision makers of your support for the living history farm concept at the Jones Farm. The following are a list of the addresses you will need for your letters. They have all, by now, heard of our campaign so your letters just need to be short, sweet, and to the point. If you know any Austin political figures such as your state representative or senator, please remember to write to them too. They can be of big help in this decision.

Mr. Michael Mocek  
Chief of Planning  
SWF R-12  
U.S. Army Corps of Engineers  
P.O. Box 17300  
Ft. Worth, Texas 76201

Mr. Bill Dolman  
Director of Parks  
Texas Parks & Wildlife Department  
4200 Smith School Road  
Austin, Texas 78744

### State Senators

**22nd Senatorial District**  
Senator Bob Glasgow  
The State Senate  
P.O. Box 12068, Capitol Station  
Austin, Texas 78711

**30th Senatorial District**  
Senator Steven Carriker  
The State Senate  
P.O. Box 12068, Capitol Station  
Austin, Texas 78711

### State Representatives

**59th Representative District**  
Representative Jim Horn  
House of Representatives  
P.O. Box 2910, Capitol Station  
Austin, Texas 78769

**61st Representative District**  
Representative Richard F. Williamson  
House of Representatives  
P.O. Box 2910, Capitol Station  
Austin, Texas 78769

### United States Representatives

#### 26th Congressional District of Texas

Representative Richard Arney  
House of Representatives  
514 Cannon House Office Bldg.  
Washington, D.C. 20515

#### 17th Congressional District

Representative Charles Stenholm  
House of Representatives  
1232 Longworth House Office Bldg.  
Washington, D.C. 20515

## Other Organizations

One of the strengths of the Friends of the Jones Farm is diversity of the interests of our members. One service we can offer with our newsletter is to share information about the various other groups our members belong to. Below you will find a list of several of those organizations. This is not a complete list, by a long shot, so if you are a member of an organization that you think other Friends might be interested in, please drop a note to the editor and I'll try to include it in future editions of this publication.

The Cooke County Heritage Society  
P.O. Box 150  
Gainesville, Texas 76240  
Individual Membership - \$10.

The Historical Society of Denton County  
P.O. Box 2184  
Denton, Texas 76202  
Individual Membership - \$10

Cross Timbers Geneological Society  
P.O. Box 197  
Gainesville, Texas 76240

The Cooke County Antique Farm Machinery Club  
C/O Henry Hess, Jr. - President  
Rt. 4, Box 195  
Gainesville, Texas 76240  
Membership - \$5.

Lone Star Draft Horse and Mule Association  
Contact/ Weldon Faught  
419 Surveyors Road  
Aubrey, Texas 76227

✓  
9A

Sunday, January 8, 1989/Denton Record-Chronicle/9A

# 'Friends of Jones Farm' organized

**By Elaine Schad**  
Correspondent

Valley View — The "Friends of the Jones Farm," officially organized Saturday, with the group expecting to become a chapter within the Denton County Historical Society.

About 36 people, including government officials and historical representatives from Cooke, Denton, Grayson and Fannin counties, elected members and heard about progress concerning

society, but all operations of the chapter, such as the group's treasury, will remain independent. By becoming part of the society, the group could gain immediate tax-exempt status and could bring a greater awareness of the project to other historians in the area, he said.

Contact with state and federal representatives has been very positive, and a decision concerning the operation of the farm could

be made by March, Miss Hays said. The Department of Parks and Wildlife, which would be in charge of maintenance and operation of the history farm, should it become a reality, has a wide range of options in its preservation, she said. The department could choose anything from moving the buildings and equipment to another location all the way to developing a full-time living history museum, Miss Hays

said.

Members will receive a newsletter, and donations are currently being accepted. The group also decided to join the Living Historical Association of America.

Membership dues are \$3. For more information or to join the organization, write or send dues to the "Friends of the Jones Farm," in care of Louis Stephenson, 1218 Hillside, Gainesville, Texas, 76240.

Jones Farm Living History Center  
Ray Roberts Lake  
Denton County, Texas

### Background

The Texas Parks & Wildlife Department is currently deciding whether to place a new living historical farm at the Roy Jones Farm on Ray Roberts Lake or at an alternate site in Dallas County, on Lake Joe Pool. The Penn Farm on Lake Joe Pool, has been under consideration for a number of years and during that time has been heavily vandalized. Although the Jones Farm (Denton County) site was the likely candidate for several years, apparently, due to increased local interest in the Dallas County site, the Penn Farm is currently favored as the choice of the Parks Department. The newly formed Friends of Penn Farm, and other Dallas area historical groups have taken an interest in this issue and demonstrated a local commitment to the project.

### Acquisition

As land was being acquired for Ray Roberts Lake, government mandated historical and archeological impact studies were being made of the affected areas. Many of the historic and pre-historic sites were surveyed by the Institute of Applied Sciences from U.N.T. and the process of "mitigation", that is, lessening the impact of the creation of the lake on the historical culture of the area, commenced. Historical structures located in what was to be lake bottom were either moved, dismantled and stored, or destroyed. Most of the structures that were relocated were placed either with private owners or historical entities out side of Denton County.

### "The State Park"

At the time of the historical survey of the project site, note was made of the largely intact Jones Farm located on the north side of Ray Roberts Lake within what will become Johnson Branch Park. At that time the Texas Parks & Wildlife Department expressed an interest in acquiring this farm and it's equipment for a proposed state operated historical farm and interpretive center. The owner of this farm is still living and was able to give an extensive oral description of all aspects of life on the site. Numerous examples of horse

drawn farm implements as well as tools and machines from almost all aspects of farm life were preserved. An inventory conducted of items at the site by archeologists from U.N.T., filled over 100 single spaced pages.

### Benefits?

The creation of Ray Roberts Lake, in addition to taking thousands of acres off the county tax rolls, by it's configuration, causes a portion of land to be cut off by direct access from the rest of the county. Not only will the roads in this area be difficult to maintain, but because of the difficulty of access to the south, this area will no doubt suffer economically.

### Jobs

A state operated, living historical farm would not only provide jobs through direct employment, but indirectly from the increased amount of tourist traffic to the area. Located a few minutes off I-35 this site would be the first state park or living historical farm upon entering Texas from the north and with proper promotion could provide a steady supply of tourist dollars to this depressed area. In addition to a small administrative staff, many area senior citizens and other residents, could be employed demonstrating traditional crafts and farming techniques. There is no question that a living historical farm at this site would have a long lasting, beneficial effect on the economies of both Cooke and Denton County.

### Education

The culture and history of north Texas are unique and worthy of preservation. Ironically, some of the prosperity we have experienced in the last 30 years, has, unfortunately taken it's toll on many of our historical resources. With the opportunity created by the prospect of a Jones Farm Living History Center we have a real chance of hanging on to a bit of "our" history, so that those who follow us can learn about their past and profit from that knowledge.

A living historical farm is first and foremost an educational resource. The museum educator at the center would have the responsibility of creating numerous programs and workshops designed specifically for the school aged visitor. The Jones Farm site is easily accessible to school district tours from Denton, Cooke, Montague and Grayson counties.

### Procedure

The Institute of Applied Sciences at U.N.T. is currently writing an proposal as to the best way to deal with the farm site and the sizable the Jones Farm Collection. That proposal will be forwarded to the Army Corps of Engineers, Ft. Worth office, which will in turn report to the Texas Parks & Wildlife Department, Interpretation Planning section. From those reports the Parks Department staff will make a recommendation to the Parks Board and they will make the final decision as to the ultimate site of the north Texas area living history farm and park facility.

### The Penn Farm

The Penn Farm site on Joe Pool Lake is a good example of a 19th century north central Texas farm stead and for that reason is also being considered by the Parks Department for a living historical farm site and interpretive center. At the time this farm was acquired in 1977, it included several houses, barns, a smokehouse, sheds, outbuildings and a garage. One of the houses dated from 1859 and another from 1876. Unfortunately this site is easily accessible from the lakeside park and during the time since Corps acquisition, has been heavily vandalized.

The house built in 1876, has been destroyed by fire, as has the garage. The remaining house at the Penn Farm is 36 years older than the Jones farm house. Although structure age is only one aspect of comparing the two properties, it is certainly a positive asset, historically speaking, of the Penn site.

Another reason cited for preferring the Penn Farm site over the Jones Farm is the close proximity to large numbers of school children who would potentially be able to use the facility for educational purposes. Recently a Friends of Penn Farm has formed and along with the Dallas County Heritage Society, is encouraging the Parks Department to choose the Dallas County site.

## The Counter-Argument

The Jones Farmstead has several distinct advantages over the Penn Farm as a living historical farm:

### 1. Cost

Since the Jones Farm has been so well protected it has not suffered from vandals to the extent that the Penn site has. Parks Department officials state that considerably less money would be needed to put the Jones Farm into operation as an interpretive /living history center, than the Penn Farm would require. In the process of mitigation, the Army Corps of Engineers is prepared to spend \$800,000 to return the Penn Farm site to the condition it was in when they acquired it. It has been estimated that the total cost of preparing the Penn Farm site for public use will be well over \$3,000,000. Although no figures have been set for the cost of mitigation and preparation of the Jones Farm site, they would no doubt, be considerably less.

### 2. Authenticity

With the loss of one of the major structures at the Penn Farm, and its close proximity to a lakeside picnic area, some of its historical fabric has been destroyed. The Jones Farm however, although located in a state park, is set back from the lake shore far enough to preserve the illusion that nothing has been disturbed, and that what you see there is just as it has always been. In addition to the savings on costs of preparing the site for the public, there is the question of historical implements and artifacts necessary to carry out the mission of the farm site interpretive center. The Jones site is ready to go and already has in place the equipment necessary to adequately tell the story of "north Texas farming". There is an excellent collection of horse drawn farming implements that were actually used on the farm. These would be a perfect complement to the active local interest in draft horses, mules and non-motorized farming demonstrations. An oral history has been conducted by U.N.T. of the surviving former inhabitants of the farm and much data has already been collected to be able to tell the Jones Farm story well.

### 3. Educational Resource

It is argued that the Dallas County site is advantageous because of the close proximity to such a large number of school children who might use the facility. The Jones Farm site is conveniently located between Denton, Gainesville and the Sherman-Denison area. Within that triangle lie dozens of smaller school districts that would no doubt, also benefit from a state living historical farm in their "neighborhood".

What must be remembered is that for the school children in the Dallas area, there are already several other facilities within easy reach, that offer the same type of information that the Penn Farm site might provide. In addition to the farmstead facilities in the metroplex, several other park/museums provide living history learning centers. It could well be argued that there would be a greater positive impact from placing a living history facility in an area in which none currently exist.

### Summation

The creation of a Jones Farm Interpretive Center at Johnson Branch Park is important for the North Central Texas region for a variety of reasons:

#### 1. The Economy

The configuration of Ray Roberts Lake has created a situation which is economically detrimental to portions of northern Denton and southern Cooke counties, adjacent the Johnson Branch Park. Placing a living history farm center at that location would greatly offset the negative impact of the lake by providing jobs and increasing tourism.

#### 2. Education

With a conspicuous lack of historical farm site museums in the north Texas area the the educational benefits of a Jones Farm museum are many and readily apparent. Of greater importance than the economic value of such a state facility, is the value to the 56,000 school children who live in the Cooke, Denton, Grayson county area, as an educational resource. With an ever increasing emphasis on the study of state and local history in our schools, the importance of this site to our region should not be overlooked.



### What to do?

The work of the Dallas Heritage Society and the Friends of the Penn Farm has been effective in encouraging the selection of the Penn Farm as "the" state funded farm site museum facility in the north Texas area. The ultimate decision will be made in Austin by the Board of the Texas Parks & Wildlife Department.

Residents of Denton, Cooke and Grayson counties who feel that placing this facility in our region would be beneficial, should make their feelings known to the Parks Department and the U.S. Army Corps of Engineers, either by direct contact (names and addresses below), or through their elected representatives. If we pull together as a region and can demonstrate to the Parks Department that our communities are committed to a state historic farm facility; that our communities will support the Jones Farm through attendance and volunteer assistance, they cannot help but to give us a fair hearing.

Please write to: Mr. Michael Mocek  
Chief of Planning  
SWF R-12  
U.S. Army Corps of Engineers  
P.O. Box 17300  
Ft. Worth, Texas

Mr. Bill Dolman  
Director of Parks  
Texas Parks and Wildlife Department  
4200 Smith School Road  
Austin, Texas 78744

Please send a copy of your correspondence to:  
Mike Cochran, Chairman  
City of Denton  
Historic Landmark Commission \*  
609 W. Oak St.  
Denton, Texas 76201

Announcing  
A Meeting of the

## Friends of the Jones Farm

Please try to attend this important organizational meeting so that we can lay the groundwork for a permanent and effective "Friends" group.

At this meeting we will:

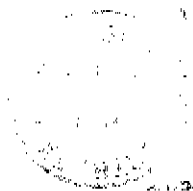
1. elect officers
2. discuss the latest Jones Farm developments
3. plan future strategies for seeing that the Jones Farm becomes a regional Living History Farm.

Saturday, January 7, 1988  
at the Valley View Community Center  
10:00 am

(The Center is a metal building on the Southwest corner of the square at Valley View. Two blocks west of I-35 on FM 922.)

For further information call Margaret Hays in Gainesville at (817) 665-4854  
or Mike Cochran in Denton at (817) 387-0995

Jo Ann Ballantine  
Convention and Vis. Bureau  
P. O. Drawer P  
Denton, Texas 76202



Hour Mtg. 36 people - diverse group

agreed to organizing  
& elected officers

Mike - V-ch.

Ruth Marshall - Sec.

Lewis Stephenson - Treas.

dues \$3.-/yr.

- organizing under Den. Co. His. Soc.
- everyone encouraged to write legislators

# DENTON CONVENTION & VISITORS BUREAU

November 3, 1988

Ms. Karen Scott  
Supervisory Archaeologist  
SWFPL-R  
U.S. Corps of Engineers  
Box 17300  
Fort Worth, TX 76102

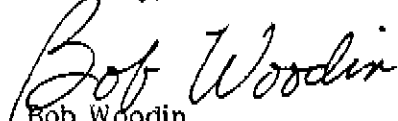
Dear Ms. Scott:

The Denton Convention & Visitors Bureau of the Denton Chamber of Commerce understands that the Texas Parks & Wildlife and the Corps of Engineers has a memorandum agreement regarding certain artifacts on Corps-owned property known euphemistically as the Jones Farm in northern Denton County adjacent to Lake Ray Roberts in what will become Johnson Branch Park.

We understand also that the University of North Texas Institute for Applied Sciences has prepared an inventory and a mitigating letter which has been sent to your attention.

We felt it incumbent upon this Bureau to inform you that the Denton Chamber of Commerce and citizenry of Denton, Texas would strongly urge that these valuable historical artifacts be kept in Denton County (their originating site) to be used, if possible, in a "living farm environment."

Sincerely,



Bob Woodin  
Denton Convention & Visitors Bureau  
Chairman

BW/jm

cc: Bob Glasgow  
Jim Horn

**TEXAS A&M UNIVERSITY  
EXTENSION RECREATION AND PARKS  
PUBLICATION LIST  
October 1988**

**Publications available from Texas Agricultural Extension Service:**

Contact: Publications, Department of Agricultural Communications  
Texas A&M University  
College Station, TX 77843-2112  
(409)845-2211

Make checks payable to: Texas Agricultural Extension Service

<u>PUB. #</u>	<u>Title</u>	<u>Date</u>	<u>Author(s)</u>
B-1517	Texas Tourism Development Laws with binder--\$13.00/copy	June 1985	R. A. Kaiser E. Dill
B-1517A	Texas Tourism Development Laws without binder--\$8.00/copy	June 1985	R. A. Kaiser E. Dill
B-1476	Developing & Using a Gifts Catalog \$3.00/copy	Dec. 1984	J. L. Crompton
B-1457	Texas County Fairs: A Report of Survey Results \$.50/copy	August 1983	B. E. Wicks C. E. Watt
B-1449	Needs Assessment: Taking the Pulse of the Public Recreation Client \$3.50/copy	June 1983	J. L. Crompton
L-2028	Survey of Buying Power & Buying Characteristics of Local Park & Recreation Departments in Texas \$.45/copy	April 1982 M. A. Bonn	C. E. Watt D. Quintana
B-1184	An Analysis of Texas Waterways \$7.00/copy	Jan. 1982 R. Josselet	H. J. Belisle
B-1304	Rules of the River \$.55/copy	April 1980	River Recreation Assoc. of Texas
B-1228	Mandatory Dedication of Park and Open Space Lands: The Situation in Texas \$.30/copy	July 1979	P. D. Taylor B. D. Kamp J. S. Seymour
MP-1168	Commercial Campground Development \$.40/copy	Nov. 1974	B. D. Kamp J. C. Stribling
L-1301	Commercial Recreation on Private Lands Some Basic Considerations \$.45/copy	June 1974	M. E. Berger I. W. Schmedemann

**Publications available from Extension Recreation and Parks:**

Contact: Extension Recreation and Parks  
Texas A&M University  
College Station, TX 77843-2261  
(409)845-5418

Make checks payable to: Texas Agricultural Extension Service

<u>Title</u>	<u>Date</u>	<u>Author(s)</u>
1988 National Park Law Enforcement Agency Directory \$6.00/copy	Spring 1988	B. E. Wicks
1985 Survey of Texas Festivals Association (TFA) Membership \$.50/copy	Fall 1985	C. E. Watt R. McCarville
East Texas Tourism 2000 \$5.00/copy	March 1985	T. Bridge H. Rosser C. A. Gunn
Resource Guide for Publications on Park Law Enforcement Services \$6.00/copy	March 1985	R. J. Steele J. E. Fletcher
How to Generate & Evaluate Ideas: A Guide to Brainstorming & Nominal Group Technique \$2.00/copy	March 1985	J. L. Crompton C. E. Watt
Evaluation of Festivals, Special Events and Visitor Attractions \$2.50/copy	Feb. 1985	E. G. McWilliams A. S. Mills
Texas Festivals and Events, A Report of Survey Results \$1.50/copy	Sept. 1984	B. E. Wicks C. E. Watt
Recreation and Parks Needs Assessment Survey Manual \$1.25/copy	March 1984	A. S. Mills D. E. Albrecht B. E. Wicks
A Description of Texas Festivals and Events \$4.00/copy	Feb. 1984	J. L. Crompton D. Botterill C. E. Watt
Mineral Wells Opportunity for Tourism Development \$10.00/copy	Oct. 1985	C. A. Gunn
Texas Festivals and Events Buyers Guide \$.75/copy	Feb. 1985 TFA	TAEX
Directory of Texas Environmental Education and Interpretive Facilities \$5.00/copy	1987	K. L. Anderech J. H. Gramman

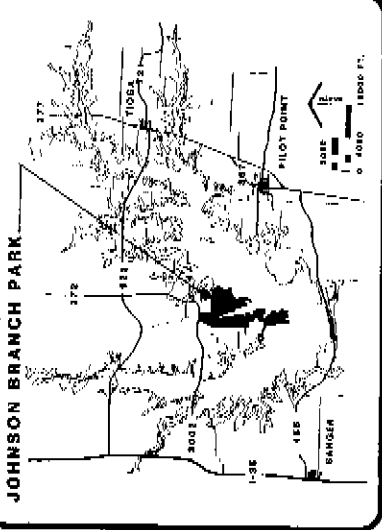
**Publications available from Texas Tourism Recreation and Information Program (TTRIP)**

Contact: Extension Recreation and Parks  
Texas A&M University  
College Station, TX 77843-2261  
(409)845-5418

Make checks payable to: Department of Recreation and Parks--TTRIP

<u>Title</u>	<u>Date</u>	<u>Author(s)</u>
Texas Tourism Information Needs Assessment Utilizing Nominal Group Technique (NGT) With Selected Industry Representatives \$2.00/copy	Nov. 1986	C. E. Watt
Texas Tourism and Recreation and Information Program Information Needs Assessment Project #2 Commercial Hunting Enterprise Operators \$2.00/copy	March 1987	C. E. Watt J. C. Stribling J. H. Gramman D. W. Steinbach
Coastal Bend Region Tourism Revitalization Study Part I Executive Summary \$12.00/copy	Jan. 1988	T. Var
Coastal Bend Tourism Revitalization Study Part II \$2.00/copy	May 1988	T. Var
A Market Segmentation Analysis for the South Padre Area A Market Segmentation Analysis for the Galveston Area A Market Segmentation Analysis for the Coastal Bend \$1.00 each/copy	Sept. 1988 Sept. 1988 Sept. 1988	T. Var T. Var T. Var
Resident Opinion of the Effects of Tourism Development in Clear Lake \$2.00/copy	1988	T. Var K. Conrad T. H. Lee L. Senyay
Sources of Assistance for Tourism in Texas \$2.00/copy	April 1988	S. Frost
Texas Tourism Trends Journal Subscription \$32.00 per year	1988	TTRIP

**VICINITY MAP**



**LEGEND**

H	HEADQUARTERS
FS	FEE CONTROL STATION
R	RESIDENCE
MC	MAINTENANCE COMPLEX
D	TRAILER DUMP STATION
○	WATER STORAGE TOWER
○	WATER WELL FACILITY
▨	EVAPO-TRANSPIRATION BED
T	COURTESY DOCK
○	FISH CLEANING SHELTER
⊗	GROUP SHELTER
⊠	UNI-SEX COMPOSTING RESTROOM
▽	VAULT RESTROOM
⊞	RESTROOM WITH SHOWERS
⊞	COMFORT STATION (WATERBORNE)
□	PICNIC PAVILION
■	PICNIC UNITS
▨	PLAYGROUND
△	PRIMITIVE TENT SITE
▲	TENT SITE
---	PARK BOUNDARY
—●—	HIKING / EQUESTRIAN TRAILS

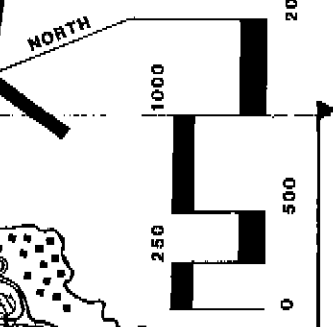
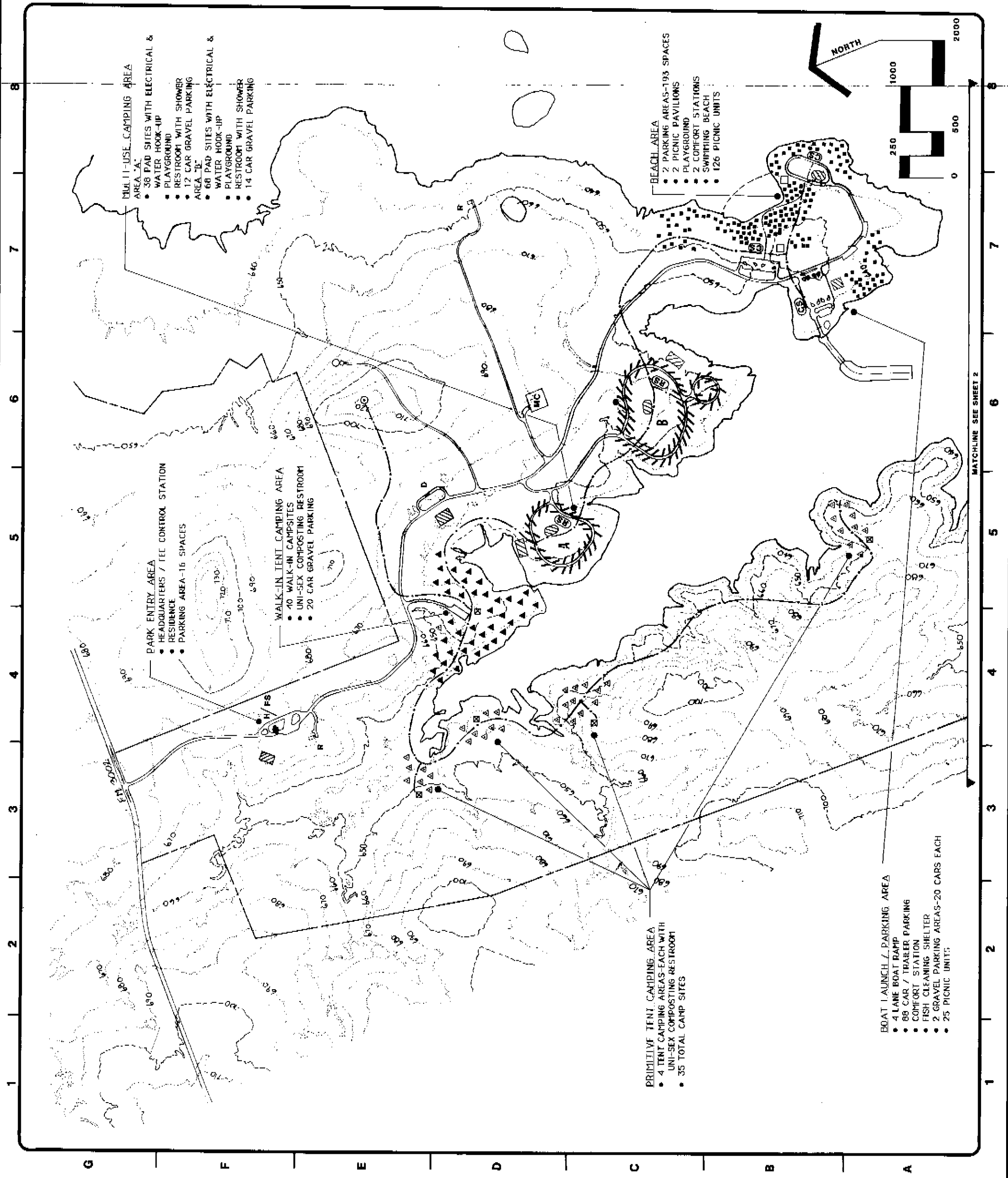
U. S. ARMY ENGINEER DISTRICT, FORT WORTH  
CORPS OF ENGINEERS  
FORT WORTH, TEXAS

**RAY ROBERTS LAKE**  
ELM FORK, TRINITY RIVER, TEXAS

**JOHNSON BRANCH**  
**PARK**

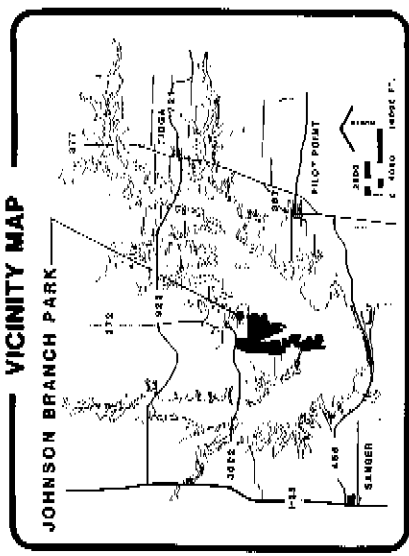
DESIGNED BY: \_\_\_\_\_  
DRAWN BY: \_\_\_\_\_  
CHECKED BY: \_\_\_\_\_

INVESTIGATION NO. \_\_\_\_\_ DATE: \_\_\_\_\_  
CONTRACT NO. \_\_\_\_\_ SHEET NO. 1 OF 2  
DRAWING NUMBER \_\_\_\_\_



MATCHLINE SEE SHEET 2





### LEGEND

H	HEADQUARTERS
FS	FEE CONTROL STATION
R	RESIDENCE
MC	MAINTENANCE COMPLEX
D	TRAILER DUMP STATION
⊙	WATER STORAGE TOWER
○	WATER WELL FACILITY
▨	EVAPO-TRANSPIRATION BED
T	COURTESY DOCK
◇	FISH CLEANING SHIFTER
⊗	GROUP SHIFTER
⊠	UNI-SEX COMPOSTING RESTROOM
⊡	VAULT RESTROOM
(RS)	RESTROOM WITH SHOWERS
(CS)	COMFORT STATION (WATERBORNE)
□	PICNIC PAVILION
■	PICNIC UNITS
▨	PLAYGROUND
▲	PRIMITIVE TENT SITE
▲	TENT SITE
---	PARK BOUNDARY
—●—	HIKING / FOOTSTRIAN TRAILS

U. S. ARMY ENGINEER DISTRICT, FORT WORTH  
CORPS OF ENGINEERS  
FORT WORTH, TEXAS

**RAY ROBERTS LAKE**  
ELM FORK, TRINITY RIVER, TEXAS

**JOHNSON BRANCH**  
**PARK**

DESIGNED BY: \_\_\_\_\_ DATE: \_\_\_\_\_  
 DRAWN BY: \_\_\_\_\_  
 REVIEWED BY: \_\_\_\_\_

IMMUTATION NO. \_\_\_\_\_  
 CONTRACT NO. \_\_\_\_\_  
 SHEET NO. 2 OF 2  
 DRAWING NUMBER 11-1

