

REPORT

to employees concerning people, programs and progress
of the Texas Department of Mental Health and Mental Retardation



Vol. 1

Austin, October, 1969

No. 9

Appropriations Increased For MH/MR

The Texas Legislature has allocated \$202 million to the Texas Department of Mental Health and Mental Retardation for the 1970-71 biennium.

The new budget allocation is \$45 million more than the \$157 million appropriated for the two fiscal years of the biennium which ended August 31.

Total appropriation for the 1970 fiscal year is \$103,215,004. The remaining \$98,918,732 is designated for the department's operation during fiscal year 1971.

The TDMHMR's seven mental hospitals and the Vernon Center received allocations totaling \$39,450,060 for the 1970 fiscal year and \$40,321,589 for the second year of the biennium.

The nine schools for the mentally retarded were allocated funds totalling \$32,420,054 for fiscal 1970 and \$33,962,756 for fiscal 1971.

Texas Research Institute received \$3,803,585 for the first year of the biennium and \$3,831,435 for the second year.

Other appropriations (1970 allocations followed by 1971 totals in parentheses) include: Central Office, \$3,694,450 (\$3,707,685); construction program, \$15,650,000 (\$7,355,000); contract treatment services and state grants-in-aid, \$4,500,000 (\$5,500,000); demonstration programs, halfway houses, \$134,400 (\$134,400); training program, \$300,000 (\$300,000); San Angelo Center, \$1,000,000 (\$1,500,000); and reserve fund, \$500,000 (\$500,000).

Also Dallas Mental Health Outpatient Clinic, \$277,617 (\$282,825); Fort Worth Mental Health Outpatient Clinic, \$228,220 (\$232,902); Rio Grande State Center, \$527,496 (\$540,861); Amarillo State Center for Human Development, \$349,678 (\$359,275); and Beaumont State Center for Human Development, \$379,444 (\$390,004).

Board Includes Psychiatrist

Charles H. Brown, M.D., of Wichita Falls, who has a distinguished background in psychiatry and public service, was appointed in May to a six-year term on the Texas Board of Mental Health and Mental Retardation.

A native of Connecticut who was educated in Arkansas, Dr. Brown has practiced psychiatry in Wichita Falls for 32 years, except for four years of military service during World War II. He has been

chief of psychiatric services at Wichita Falls General Hospital since 1946.

He received his BA degree from Hendrix College, and BS and MD degrees from the University of Arkansas.

Dr. Brown is chairman of the Mental Health Committee of Texas Medical Association and vice-president in charge of development for the Texas Association for Mental Health. He has been a consultant to Wichita Falls State Hospital since 1949.

In 1944, he was named a diplomate of the American Board of Psychiatry and Neurology.

He served as a member of the First and Second Congresses on Mental Health in 1962 and 1964, and as a member of the Governor's Planning Committee for Mental Health from 1962-65.

Dr. Brown retired from the Air Force Reserve in 1965 with the rank of Lieutenant Colonel, after 30 years commissioned service. He has been an Air Force consultant since 1948.

He is a past chairman of the section on private practice, American Psychiatric Association, and a member of numerous other regional, state, and national professional organizations.



CHARLES H. BROWN, M.D.

Design Advisors Appointed by MH/MR Board

A five-member committee of construction specialists has been appointed to advise the TDMHMR on design and construction of new facilities.

Horace E. Cromer, M.D., chairman of the Texas Board of MH/MR, named Howard Tellepsen, Houston construction executive, to head the committee.

Other members are Herman Blum, Dallas consulting engineer, and three architects, E.G. Hamilton of Dallas, Douglas Steinmen of Beaumont, and Tom Bullock of Houston.

The advisory group will assist TDMHMR in establishing a design and construction division, a responsibility assigned by the 61st Legislature earlier this year.

Training Aid Planned

Bill Locke, Ph.D., a consultant to the Lubbock State School, is working on a technique that uses electronics to teach basic self-help skills to the profoundly retarded.

A new member of the psychology department faculty at Texas Technological University, Dr. Locke is building an artificial "reward" system he hopes can be useful in simultaneously modifying the behavior of two or more children who are profound retardates, those with IQ's of less than 20.

Behavior modification, while a standard technique, is often difficult, since many profound retardates cannot or do not respond to verbal directions. They must be shown what to do in small steps and given a positive reward for mastering each step. The reward reinforces the retardate's new knowledge.

Dr. Locke's method is designed to change the verbal behavior of groups of retardates by using microphones and a panel of lights that display "rewards" for correct responses.

He plans to "team" children who have low verbal output with children displaying high verbal output (often to the point of gibberish). A "team" would be rewarded if the child with low verbal output increases his output and if the child with high output decreases his.

Dr. Locke began developing the equipment while at the Bureau of Child Research at the University of Kansas in

Parsons, before joining the Texas Tech faculty in August. He hopes to have his system in operation by December.

He is working with a Lubbock State School task force headed by Dr. Gladys P. Sutherland.



DR. BILL LOCKE, Lubbock State School consultant, works on "artificial reward system."

Board Adopts Regulations Local Centers

Regulations and standards for the operation of community MH/MR centers have been adopted by the Texas Board of Mental Health and Mental Retardation.

The rules, subject to review and revision, apply to all services provided by community MH/MR centers governed by local boards of trustees. Community boards took part in drafting the regulations, which incorporate legislative amendments to the Texas Mental Health and Mental Retardation Act, effective Sept. 1.

State grant-in-aid funds for centers will be provided to 23 local MH/MR boards on the basis of population served, with additional funds to be allocated according to the financial ability of a local community to support public services.

Community boards are required to match state grants with a minimum of 20 percent and a maximum of 40 percent in local support which may include the value of buildings and improvements.

PERSONAL MENTION

Melvin Q. Thorne, Jr. is the new chief of social services and coordinator of community services at Vernon Center. He was formerly with the Midland Community Center for MH/MR.

Mirta Guzmeli, M.D., has joined the Wichita Falls State Hospital staff as a medical technician.

Monty Sontag, Ed.D., superintendent of the Corpus Christi State School, has been elected chairman of the Texas Committee of Organizations for the Handicapped.

Deaths

Ben Ivey of Denton, past chairman of the Volunteer Services Council for Texas State Hospitals and Special Schools.

Community MH Programs Reviewed at Conference

More than 100 representatives of community MH/MR centers throughout Texas and the Texas Department of Mental Health and Mental Retardation exchanged ideas and viewpoints in Austin Sept. 11 and 12.

Emphasis was on methods that have proven effective in various community mental health programs in Texas, with presentations by local MH/MR center personnel from Amarillo, Houston, Dallas, Texarkana, San Antonio, Austin, El Paso, Belton, Edinburg, Midland, and Waco.

The conference was sponsored jointly by TDMHMR and the state's 23 community MH/MR boards of trustees.

VSC Meeting Set

Approximately 100 advance registrations have been received for the 11th annual meeting of the Volunteer Services Council for Texas State Hospitals and Special Schools.

The meeting is scheduled in Big Spring on Oct. 3-4, with Governor Preston Smith as keynote speaker.

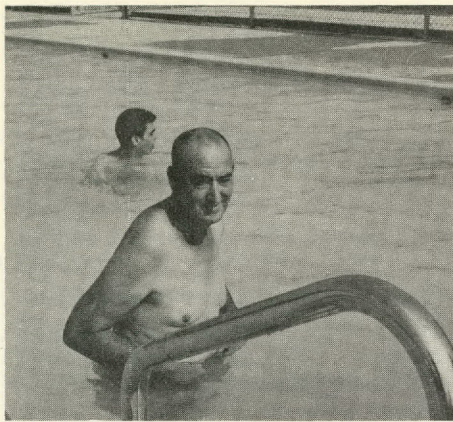
Representatives of 26 affiliated programs are expected to attend the conference.

80 Wichita Falls Patients Camp At 'Singing Hills'

Approximately 80 patients from Wichita Falls State Hospital attended two-week camping sessions at the H.E. Butt Foundation's "Singing Hills" campsite on the Frio River, near Leakey.

Hospital buses took 40 patients and 20 staff members to the camp on Sept. 3, for the first session of camping, swimming, and boating. The second group began camping on Sept. 17.

WFSH personnel directing camping sessions are Mrs. Elizabeth Cox, Charles Francisco, Grady Solomon, and Bert Swatzel.



TESTING THE NEW swimming pool at Travis State School are Carl Bailey, foreground, who came to the school when it opened in 1934, and Ted Cox, rear, the school's newest resident. The new pool is 60 feet long, 40 feet wide and has a maximum depth of 5 feet and a minimum depth of 2 feet.

MR Leaders Confer At Corpus Christi

Superintendents of TDMHMR special schools for the mentally retarded and directors of state mental retardation centers met in Corpus Christi on Sept. 15-16.

Operational procedures, budgeting, and interpretation of new legislation were discussed, said Charles H. Martin, deputy commissioner for MR.

Another meeting for key personnel is scheduled in Austin later this fall.

State School Entries Win 16 Awards at Fair

Abilene State School residents won 16 awards in the arts and crafts division of the West Texas State Fair, Sept. 6 in Abilene.

L.W. Cain, superintendent, said about 1,000 residents of the school attended the fair.

Five first place ribbons were received by residents for entries in crochet, miscellaneous handwork, weaving, and junior hobbies categories. Second and third place ribbons were received for entries in crewel work, crochet, weaving, junior hobbies, embroidery, rugs, table cloths, and mosaic categories.

CHANGE OF ADDRESS

If you receive your REPORT by mail and you change your mailing address, please advise the Communications Division, Texas Department of Mental Health and Mental Retardation, Box S, Capital Station, Austin, Texas 78711. Please include both your old and new address.

Outreach Program Provides MH Services in Rural Areas

The Outreach Program of the Texas Department of Mental Health and Mental Retardation literally is "reaching out" to provide more comprehensive mental health services throughout the state.

It is an extension by state mental hospitals to provide local mental health services in rural areas and smaller cities which cannot qualify for a community MH center.

Six outreach clinics are in operation, five under the supervision of the Big Spring State Hospital and one under the Terrell State Hospital.

The Big Spring hospital staff initiated the outreach program when it opened the first county clinic at Snyder in Scurry County, in February, 1968. Since then it has established clinics in Lamesa, Dawson County; Colorado City, Mitchell County; Seminole, Gaines County; and Pecos, Reeves County.

The Terrell hospital has established clinics at Greenville and at Paris.

MH satellite facilities are also operative at Laredo and Kingsville as outreach projects of the TDMHMR Rio Grande Center at Harlingen.

Both Big Spring and Terrell are planning additional outreach clinics and other state hospitals are planning outreach programs.

Outreach clinics operate as extensions of state hospitals. Community involvement is a key factor to the success of the program. Participating communities provide office space, funds to meet basic operating expenses, and a three-member local advisory board to work with the outreach clinic.

The clinics' caseworkers, casework assistants, nurses, and clerks are TDMHMR employees. TDMHMR also pays the fees of a local physician who devotes at least one-half day per week to seeing patients for the clinic.

Each clinic is under the supervision of the superintendent of the sponsoring state hospital.

In outlining the outreach program, Gary E. Miller, M.D., deputy commissioner for mental health, said:

"The follow-up care and drug supervision the clinics will provide should make a significant early impact on the readmission rate to state hospitals. As experience is gathered and the outreach services become firmly established, ef-

forts at early detection and crisis intervention may make it possible to avoid hospitalizing many new patients, thus reducing the rate of first admissions".

Through outreach and related community mental health programs, many patients will be treated in familiar surroundings—such as their hometown or county—and will be able to remain close to their families.

John Kinross-Wright, M.D., commissioner, TDMHMR, said the outreach program is a major consideration in projecting a 25 percent decline in the resident hospital population expected by 1971.

Two Are Appointed To TDMHMR Posts

The Texas Board of Mental Health and Mental Retardation has approved the appointments of a Director of Child and Adolescent Services and a Director of Design and Construction for TDMHMR.



HUGHES

Ann H. Hughes, M.D., formerly director of the Children's Psychiatric Clinic at the University of Texas Southwestern Medical School, Dallas, is the new Director of Child and Adolescent Services.

Philip L. Bible, Jr., formerly executive assistant director of the State Building Commission, is the new TDMHMR Director of Design and Construction, a function transferred to the Department from the Building Commission effective Sept. 1, by the 61st Legislature.

"Dr. Hughes will be responsible for developing child and adolescent services throughout the Department," said John Kinross-Wright, M.D., Commissioner, who made the appointments. "Mr. Bible's experience as an architect and administrator will bring proven leadership to our new design and construction division."



BIBLE

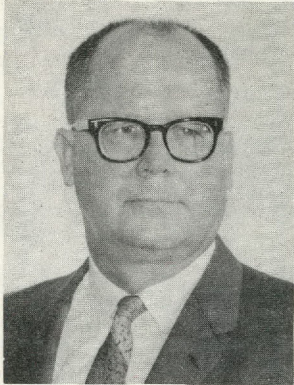
WHO'S WHO IN TDMHMR

Deputy Commissioner, MR: Charles H. Martin

The Deputy Commissioner for Mental Retardation is Charles H. Martin, a psychologist.

He is responsible for the administration of all state mental retardation facilities, which involves the training and care of almost 12,000 retardates. He is appointed by the Commissioner for TDMHMR and confirmed by the Texas Board of Mental Health and Mental Retardation.

Reporting directly to the Commissioner, the MR deputy is responsible for 10 special residential schools for the



retarded and two State Centers for Human Development, at Amarillo and Beaumont, which provide intensive day programs. Martin's duties include recommending superintendents and other key personnel at all state MR facilities and for directing the overall operation of all institutions. He also acts as advisor to community MR centers and directs state support services for them.

Appointed deputy commissioner last June 1, Martin had previously served as Superintendent of Richmond State School.

(This is the third in a series of articles explaining the role of administrators in the Texas Department of Mental Health and Mental Retardation.)

Tower, Yarborough Will Address TAMH Meeting in Dallas

U.S. Senators John Tower and Ralph Yarborough will be among featured speakers at the annual meeting of the Texas Association for Mental Health at the Marriott Hotel in Dallas, Oct. 16-17.

Tower will speak at the Oct. 17 evening awards banquet. Earlier the same day, Yarborough will address the association's noon luncheon.

Also scheduled to speak at the noon meeting is Mrs. Geri Joseph, president of the National Association for Mental Health.

Gary E. Miller, M.D., deputy commissioner for mental health, TDMHMR, will discuss community mental health care at a Thursday afternoon session. Also scheduled is a panel discussion of treatment, education, and special services for mentally ill children.

Day Care Training Unit Organized at Orange

A satellite day care training unit for severely retarded children has been organized in Orange by the Beaumont State Center for Human Development in a joint effort with the Orange County Association for Retarded Children.

Seven retarded children not eligible for public school classes are being taught self-help skills in classes held at the First Presbyterian Church Educational Building. Mrs. Jewel Shankle is the teacher.

The Beaumont State Center will provide related services, such as group counseling for parents, medical aid, and regular checkups and evaluation.

Corpus Christi State School

February Opening Set

The new Corpus Christi State School is expected to open in February, 1970.

Staff members are scheduled to begin moving into the facilities sometime in January, said Monty Sontag, Ed.D., superintendent.

The staff has been expanded recently to include a medical director, volunteer coordinator, chaplain, and personnel officer.

The school, being built at the site of the old Cliff Maus Airport, is expected to open with approximately 250 residents. Half the students will be transfer-

red to Corpus Christi from other state schools and the others will be admitted from the waiting list, Dr. Sontag said.

About 180 of the first 250 residents will be children confined to cribs and youth beds. Two more construction phases, with 90 and 64 beds, are scheduled for completion sometime after the new facilities open.

Since the state school began operation in Corpus Christi in 1967, it has been housed in the Child Study Center adjacent to the Driscoll Foundation Center's Hospital.

Texas Department
of Mental Health
and Mental Retardation



John Kinross-Wright, M.D.
Commissioner

Box S, Capitol Station
Austin, Texas 78711
512 453-7231