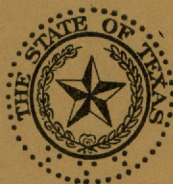


W 700.7

M681

#263

STATE OF TEXAS
BOARD OF WATER ENGINEERS
and
UNITED STATES DEPARTMENT OF AGRICULTURE
SOIL CONSERVATION SERVICE
DIVISION OF IRRIGATION AND WATER CONSERVATION



PROGRESS REPORT NO. 13
of
SILT LOAD OF TEXAS STREAMS
(1950-1951)

DOCUMENTS DEPARTMENT

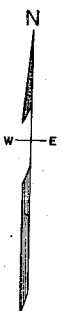
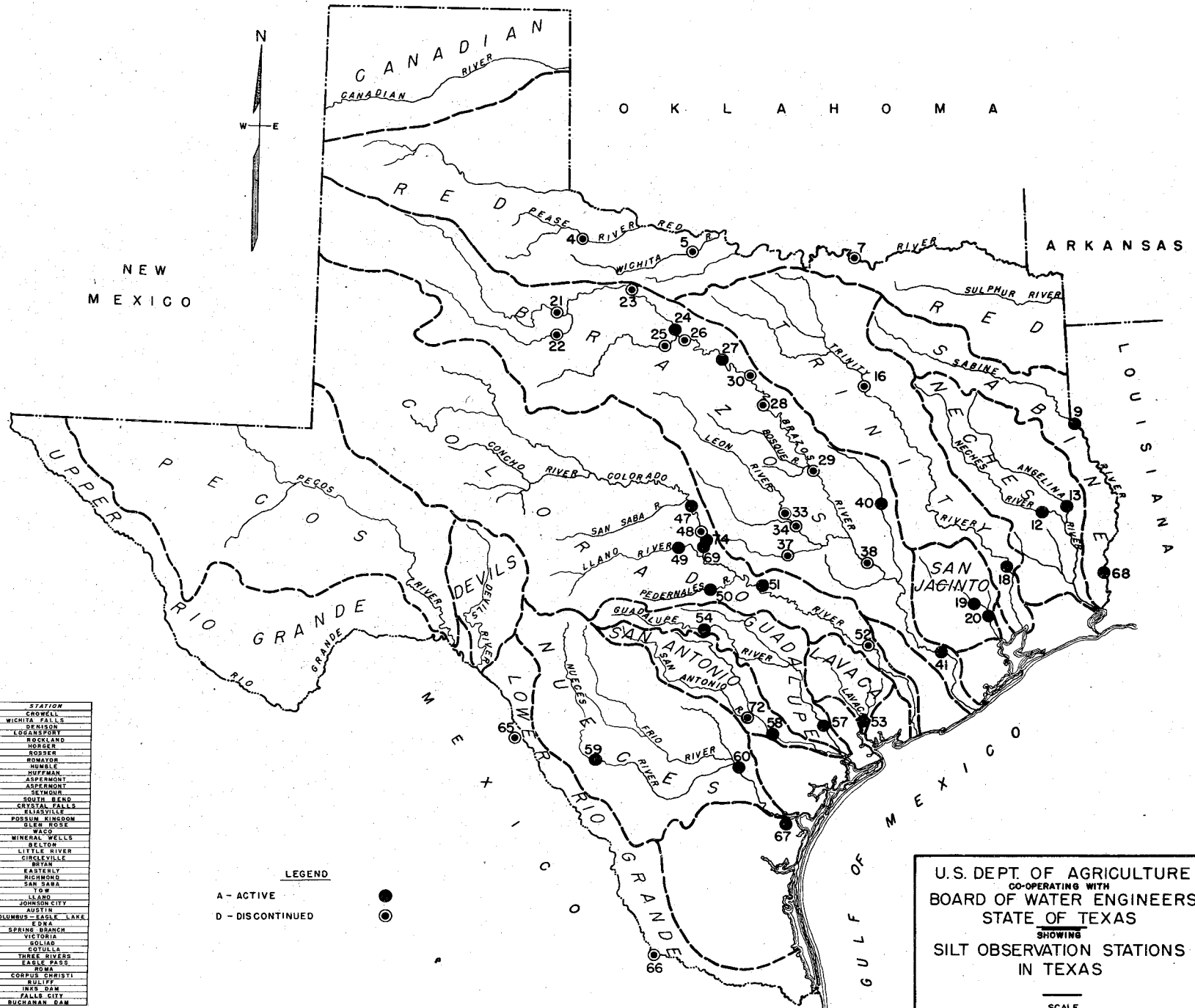
MAR 10 1962

DALLAS PUBLIC LIBRARY

(The silt data contained in this report were obtained under a cooperative agreement between the Board of Water Engineers and U. S. Department of Agriculture, Soil Conservation Service, Division of Irrigation and Water Conservation.)

Austin, Texas

August, 1952



INDEX

No.	WATERSHED	STATION	STATUS
1	RED	PREAK	CROWELL
2	RED	WICHITA	WICHITA FALLS
7	RED	DEWSON	LOGANSPOUT
8	SABINE	SABINE	ROCKLAND
12	NECHES	NECHES	HORNER
13	NECHES	ANGELINA	HORNER
18	TRINITY	TRINITY	HUMBLE
19	TRINITY	TRINITY	HUMBLE
20	SAN JACINTO	WEST FORK	HUMBLE
21	BRAZOS	SALT FORK	ASPERMONT
22	BRAZOS	SALT FORK	ASPERMONT
23	BRAZOS	SALT FORK	SEYMOUR
24	BRAZOS	SOUTH BEND	SEYMOUR
25	BRAZOS	CLEAR FORK	CRYSTAL FALLS
26	BRAZOS	ELIASVILLE	POSSUM KINGDOM
27	BRAZOS	BRAZOS	GLENN ROSE
28	BRAZOS	BRAZOS	WACO
29	BRAZOS	BRAZOS	MINERAL WELLS
30	BRAZOS	LEON	BELTON
31	BRAZOS	LITTLE RIVER	LITTLE RIVER
32	BRAZOS	SAN MARCEL	CIRKLEVILLE
33	BRAZOS	BRYAN	BRYAN
34	BRAZOS	NAVASOTA	EASTWILE
35	BRAZOS	BRAZOS	RICHMOND
36	BRAZOS	BRAZOS	SAN SABA
37	BRAZOS	BRAZOS	TOW
38	BRAZOS	BRAZOS	JOHNS CITY
39	BRAZOS	BRAZOS	AUSTIN
40	BRAZOS	BRAZOS	COLUMBUS-SAGLE LAKE
41	BRAZOS	BRAZOS	EDNA
42	BRAZOS	BRAZOS	SPRING BRANCH
43	BRAZOS	BRAZOS	VICTORIA
44	BRAZOS	BRAZOS	GOLIAD
45	BRAZOS	BRAZOS	COTILLA
46	BRAZOS	BRAZOS	THREE RIVERS
47	BRAZOS	BRAZOS	EASLEY PASS
48	BRAZOS	BRAZOS	ROMA
49	BRAZOS	BRAZOS	CORPUS CHRISTI
50	BRAZOS	BRAZOS	RULIFF
51	BRAZOS	BRAZOS	INNS DEN
52	BRAZOS	BRAZOS	FALLS CITY
53	BRAZOS	BRAZOS	BUCHANAN DAM

LEGEND

- A - ACTIVE
- D - DISCONTINUED

U.S. DEPT. OF AGRICULTURE
 CO-OPERATING WITH
 BOARD OF WATER ENGINEERS
 STATE OF TEXAS
 SHOWING
 SILT OBSERVATION STATIONS
 IN TEXAS





STATE OF TEXAS
BOARD OF WATER ENGINEERS
and
UNITED STATES DEPARTMENT OF AGRICULTURE
SOIL CONSERVATION SERVICE
DIVISION OF IRRIGATION AND WATER CONSERVATION

PROGRESS REPORT NO. 13

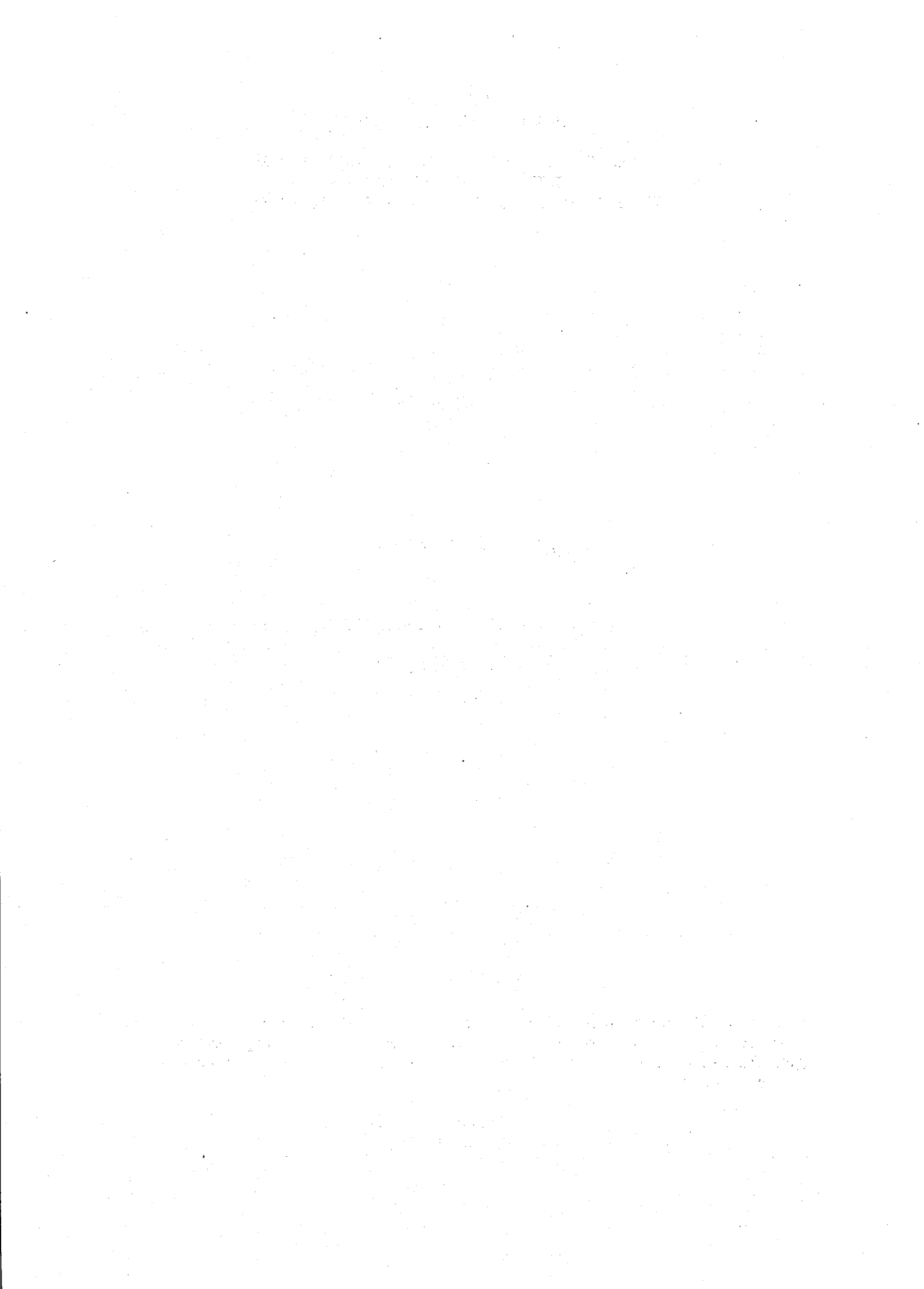
of

SILT LOAD OF TEXAS STREAMS

(1950 - 1951)

(The silt data contained in this report were obtained under a cooperative agreement between the Board of Water Engineers and U. S. Department of Agriculture, Soil Conservation Service, Division of Irrigation and Water Conservation.)

Austin, Texas
August, 1952



ORGANIZATION

STATE OF TEXAS

BOARD OF WATER ENGINEERS

H. A. Beckwith, Chairman

A. P. Rollins, Member

James S. Guleke, Member

UNITED STATES DEPARTMENT OF AGRICULTURE

SOIL CONSERVATION SERVICE

DIVISION OF IRRIGATION ENGINEERING AND WATER CONSERVATION

Cooperating in Studies on Silt of Texas Streams

R. M. Salter, Chief of Service

M. L. Nichols, Chief of Research

Geo. D. Clyde, Chief, Division of

Irrigation Engineering

T A B L E O F C O N T E N T S

	<u>Page</u>
INTRODUCTION	1
COOPERATION	2
SUSPENDED SILT LOAD DETERMINATIONS	
<u>Brazos River Watershed</u>	
Easterly Station (Navasota River)	3-4
South Bend Station	5-6
Possum Kingdom Dam Station	7-8
Richmond Station	9-10
<u>Colorado River Watershed</u>	
Llano Station (Llano River)	11-12
Johnson City Station (Pedernales River)	13-14
San Saba Station	15-16
Inks Dam Station	17-18
Buchanan Dam Station	19-20
Austin Station	21-22
<u>Guadalupe River Watershed</u>	
Spring Branch Station	23-24
Victoria Station	25-26

T A B L E O F C O N T E N T S (Cont'd)

	<u>Page</u>
<u>Lavaca River Watershed</u>	
Edna Station	27-28
<u>Neches River Watershed</u>	
Horger Station (Angelina River)	29-30
Rockland Station	31-32
<u>Nueces River Watershed</u>	
Cotulla Station	33-34
Three Rivers Station	35-36
Corpus Christi Dam Station	37-38
<u>Sabine River Watershed</u>	
Logansport, La. Station	39-40
<u>San Antonio River Watershed</u>	
Goliad Station	41-42
<u>San Jacinto River Watershed</u>	
Huffman Station	43-44
Humble Station (West Fork San Jacinto River)	45-46
<u>Trinity River Watershed</u>	
Romayor Station	47-48
SUMMARY OF ALL TEXAS SILT STATIONS, ACTIVE AND DISCONTINUED	49-50

Progress Report No. 13
of
THE SILT LOAD OF TEXAS STREAMS, 1950-1951

by

Dean W. Bloodgood, Irrigation Engineer
Division of Irrigation Engineering and Water Conservation
Soil Conservation Service
U. S. Department of Agriculture

and

James E. Mortensen, Testing Engineer
Texas Board of Water Engineers

INTRODUCTION

During the water year of October 1, 1950 to September 30, 1951, the silt load of Texas streams was the lowest of most previous years' records. The average annual silt load for 19 active stations located on 10 of the principal watersheds of Texas over record periods ranging from 9 to 27 years is 36,309 acre feet. This amount is exclusive of any silt by-passing Possum Kingdom, Buchanan, Inks, and Corpus Christi Dams. For the water year ending September 30, 1951, the silt load for the same number of stations was 5,648 acre feet, about 16 percent of normal. The normal annual discharge of most of the silt-carrying streams is 27,703,689 acre feet, while for the water year ending September 30, 1951, the total flow was 7,833,840 acre feet, which is about 28 percent of the normal flow. These subnormal conditions are due mostly to the continued drouth and lack of hard or torrential rains on the upper portions of the watersheds.

The silt load by-passing the four dams for the 1951 water year was 135 acre feet, which is 49 percent of the normal load of 277 acre feet. The amount of water released from the dams for the water year was 2,452,720 acre feet, 11 percent above the normal release of 2,318,142 acre feet. The large release of the stored water for this water year is due mostly to the increased rice acreage being irrigated in the lower portions of the Brazos and Colorado watersheds.

During the water year, the cooperative silt laboratory received 9,367 water samples from 23 stations for silt determinations. The number of water samples also included those received from the stations located at the four dams.

The thirteenth progress silt report is one of a series of such reports that has been published annually since 1939 through a cooperative agreement between the Texas Board of Water Engineers and the Division of Irrigation Engineering and Water Conservation, Soil Conservation Service, United States Department of Agriculture.

Some of the silt determinations are made possible through the cooperation of several agencies in Texas which are interested in the silt pollution of streams and reservoirs. These cooperating agencies are the Lower Colorado River Authority, Brazos River Conservation and Reclamation District, and the water departments of the Cities of Houston and Corpus Christi. The Surface Water Division, United States Geological Survey, has also offered helpful and congenial cooperation in furnishing river discharge data and other information.

SILT DATA

Brazos River Watershed
at

EASTERLY STATION ON NAVASOTA RIVER

for

Water Year 1950-1951

(October 1, 1950 to September 30, 1951)

Month	Discharge	Silt Load of Stream		Percentage of
	of Stream ac.-ft.	tons	ac.-ft.	Dry Silt by Weight pct.
<u>1950</u>				
October	150	10	0	.005
November	460	70	0	.011
December	280	30	0	.008
<u>1951</u>				
January	380	30	0	.006
February	740	70	0	.007
March	1,630	870	1	.039
April	1,240	330	0	.020
May	4,710	2,200	1	.034
June	3,180	950	1	.022
July	60	20	0	.024
August	0	0	0	.000
September	4,080	3,190	2	.057
Totals	16,910	7,770	5	

U.S.G.S. yearly discharge in acre-feet - - - - - 16,910

Total silt for year in acre-feet - - - - - 5

Acre-feet of silt per year per square mile
of contributing watershed - - - - - .005

Average percent of silt by weight for year - - - - - .034

Drainage area in square miles (net) - - - - - 949

SUMMARY OF SILT DATA

for

Brazos River Watershed

Stream: NAVASOTA
 Station: EASTERLY
 Sampler: Goree King

(Samples were taken from bridge
 on U. S. Highway No. 79)

Water Year	Discharge	Silt Load of Stream		Average
	of Stream	tons	ac.-ft.	Percentage of Dry Silt by Weight
	ac.-ft.	tons	ac.-ft.	pct.
1941-42 ^{1/}	199,750	142,600	94	.052
1942-43	84,820	59,600	39	.052
1943-44	592,670	889,340	584	.110
1944-45	556,120	607,980	400	.080
1945-46	617,980	513,050	337	.061
1946-47	441,190	193,110	127	.032
1947-48	99,160	79,980	53	.059
1948-49	105,970	89,010	58	.062
1949-50	256,050	137,000	88	.039
1950-51	<u>16,910</u>	<u>7,770</u>	<u>5</u>	.034
TOTALS	2,970,620	2,719,440	1,785	

For period of 9.748 years

Average discharge in acre-feet per year	- - - - -	304,741
Average acre-feet of silt per year	- - - - -	183
Average acre-feet of silt per year per square mile of contributing watershed	- - - - -	.192
Average tons of silt per year	- - - - -	278,974
Average percent of silt by weight	- - - - -	.067
Drainage area in square miles (net)	- - - - -	949

^{1/} Station was established January 1, 1942.

SILT DATA

Brazos River Watershed
at
SOUTH BEND STATION ON BRAZOS RIVER

for

Water Year 1950-1951
(October 1, 1950 to September 30, 1951)

Month	Discharge	Silt Load of Stream		Percentage of
	of Stream	tons	ac.-ft.	Dry Silt by Weight
	ac.-ft.			pct.
<u>1950</u>				
October	13,360	72,830	52	.400
November	2,240	810	1	.027
December	2,520	370	0	.011
<u>1951</u>				
January	2,270	140	0	.005
February	2,940	1,970	1	.049
March	1,920	110	0	.004
April	1,480	100	0	.005
May	81,960	835,890	548	.749
June	126,900	1,139,350	747	.660
July	19,200	73,150	48	.280
August	16,620	422,500	277	.187
September	11,930	122,220	80	.753
Totals	283,340	2,669,440	1,754	

U.S.G.S. yearly discharge in acre-feet - - - - -	283,340
Total silt for year in acre-feet - - - - -	1,754
Acre-feet of silt per year per square mile of contributing watershed - - - - -	.142
Average percent of silt by weight for year - - - - -	.692
Drainage area in square miles (net) - - - - -	12,360

SUMMARY OF SILT DATA

for

Brazos River Watershed

Stream: BRAZOS
 Station: SOUTH BEND (Samples taken from bridge
 Sampler: O. W. Hill on State Highway No. 67)

Water Year	Discharge	Silt Load of Stream		Average
	of Stream	tons	ac.-ft.	Percentage of Dry Silt by Weight
	ac.-ft.	tons	ac.-ft.	pct.
1941-42 ^{1/}	672,230	4,581,930	3,005	.501
1942-43	491,060	3,846,100	2,523	.575
1943-44	171,360	1,071,620	703	.459
1944-45	394,460	2,258,250	1,482	.421
1945-46	363,890	3,116,920	2,044	.629
1946-47	747,030	4,414,900	2,897	.434
1947-48	391,140	2,718,220	1,783	.510
1948-49	514,710	6,193,420	4,062	.884
1949-50	688,230	7,234,440	4,746	.772
1950-51	283,340	2,669,440	1,754	.692
TOTALS	4,717,450	38,105,240	24,999	

For period of 9.710 years

Average discharge in acre-feet per year - - - - -	485,834
Average acre-feet of silt per year - - - - -	2,575
Average acre-feet of silt per year per square mile of contributing watershed - - - - -	.208
Average tons of silt per year - - - - -	3,924,330
Average percent of silt by weight - - - - -	.593
Drainage area in square miles (net) - - - - -	12,360

^{1/} Station was established January 15, 1942.

SILT DATA

Brazos River Watershed
at
POSSUM KINGDOM DAM STATION ON BRAZOS RIVER

for

Water Year 1950-1951
(October 1, 1950 to September 30, 1951)

Month	Discharge	Silt Load of Stream		Percentage of
	of Stream	tons	ac.-ft.	Dry Silt by Weight
	ac.-ft.			pct.
<u>1950</u>				
October	88,070	8,320	5	.007
November	31,120	1,840	1	.004
December	43,870	1,920	1	.003
<u>1951</u>				
January	81,840	3,260	2	.003
February	42,880	2,960	2	.005
March	9,280	310	0	.002
April	42,530	1,510	1	.003
May	30,620	870	1	.002
June	78,150	2,580	2	.002
July	154,950	4,830	3	.002
August	127,360	9,280	6	.005
September	63,650	4,450	3	.005
Totals	794,320	42,130	27	

<u>1/</u> Yearly discharge in acre-feet - - - - -	794,320
Total silt for year in acre-feet - - - - -	27
Acre-feet of silt per year per square mile of contributing watershed - - - - -	---
Average percent of silt by weight for year - - - - -	.004
Drainage area in square miles (net) - - - - -	---

1/ Discharge figures for this station obtained from Brazos River Conservation and Reclamation District

SUMMARY OF SILT DATA

for

Brazos River Watershed

Stream: BRAZOS
 Station: POSSUM KINGDOM DAM (Samples taken in tailrace
 Sampler: J. P. Cochran and over spillway)

Water Year	Discharge	Silt Load of Stream		Average
	of Stream	tons	ac.-ft.	Percentage of Dry Silt by Weight
	ac.-ft.			pct.
1941-42 ^{1/}	588,030	55,070	36	.007
1942-43	851,290	625,770	410	.054
1943-44	92,040	15,590	10	.012
1944-45	307,410	51,350	32	.012
1945-46	293,110	41,250	27	.010
1946-47	946,860	75,280	49	.006
1947-48	323,380	31,060	22	.007
1948-49	531,620	61,470	40	.008
1949-50	632,520	60,030	39	.007
1950-51	<u>794,320</u>	<u>42,130</u>	<u>27</u>	.004
TOTALS	5,360,580	1,059,000	692	

For period of 9.710 years

Average discharge in acre-feet per year - - - - -	552,068
Average acre-feet of silt per year - - - - -	71
Average acre-feet of silt per year per square mile of contributing watershed - - - - -	---
Average tons of silt per year - - - - -	109,063
Average percent of silt by weight - - - - -	.015
Drainage area in square miles (net) - - - - -	---

^{1/} Station was established January 15, 1942.

SILT DATA

Brazos River Watershed
at
RICHMOND STATION ON BRAZOS RIVER

for

Water Year 1950-1951
(October 1, 1950 to September 30, 1951)

Month	Discharge	Silt Load of Stream		Percentage of
	of Stream	tons	ac.-ft.	Dry Silt by Weight
	ac.-ft.			pct.
<u>1950</u>				
October	149,100	39,970	26	.020
November	54,070	3,710	2	.005
December	52,900	7,310	5	.010
<u>1951</u>				
January	56,340	3,540	2	.005
February	66,900	5,650	4	.006
March	61,220	29,000	19	.035
April	74,640	129,650	85	.128
May	73,860	30,150	20	.030
June	248,000	778,600	511	.231
July	59,300	8,800	6	.011
August	51,910	5,650	4	.008
September	78,360	37,140	24	.035
Totals	1,026,600	1,079,170	708	

U.S.G.S. yearly discharge in acre-feet - - - - -	1,026,600
Total silt for year in acre-feet - - - - -	708
Acre-feet of silt per year per square mile of contributing watershed - - - - -	.020
Average percent of silt by weight for year - - - - -	.077
Drainage area in square miles (net) - - - - -	34,810

SUMMARY OF SILT DATA

for

Brazos River Watershed

Stream: BRAZOS
 Station: RICHMOND
 Sampler: S. J. Butler

(Samples taken from bridge
 on U. S. Highway No. 90)

Water Year	Discharge	Silt Load of Stream		Average
	of Stream	tons	ac.-ft.	Percentage of Dry Silt by Weight
	ac.-ft.	tons	ac.-ft.	pct.
1923-24 ^{1/}	494,900	714,220	468	.106
1924-25	1,237,300	12,676,710	8,314	.753
1925-26	8,762,800	44,939,350	29,476	.377
1926-27	5,562,600	34,377,320	21,739	.454
1927-28	3,318,400	28,163,890	18,472	.623
1928-29	6,000,000	32,284,200	21,174	.395
1929-30	5,218,900	38,686,330	25,373	.545
1930-31	5,639,000	27,766,660	18,212	.362
1931-32 ^{2-3/}	8,041,000	63,649,510	41,749	.582
1932-33	2,563,100	15,175,520	9,954	.435
1933-34	3,372,670	23,318,780	15,294	.508
1934-35	7,334,480	63,472,990	41,633	.636
1935-36	6,031,540	40,330,500	26,453	.491
1936-37	5,405,790	25,531,710	16,747	.347
1937-38	7,203,600	55,656,280	36,544	.568
1938-39	1,966,110	14,742,470	9,668	.551
1939-40	3,161,120	23,679,220	15,531	.550
1940-41	16,124,370	97,306,510	63,824	.443
1941-42	8,522,910	71,490,110	46,891	.616
1942-43	3,255,310	11,426,360	7,496	.258
1943-44	7,626,500	46,735,630	30,654	.450
1944-45	9,804,730	57,254,020	37,555	.429
1945-46	7,399,590	35,484,230	23,275	.352
1946-47	6,345,770	21,011,530	13,783	.243
1947-48	1,950,620	3,950,720	2,591	.149
1948-49	3,362,850	14,456,500	9,482	.316
1949-50	4,186,500	9,543,800	6,259	.167
1950-51	1,026,600	1,079,170	708	.077
TOTALS	150,919,060	914,904,240	599,319	

For period of 27.306 years

Average discharge in acre-feet per year - - - - -	5,526,956
Average acre-feet of silt per year - - - - -	21,948
Average acre-feet of silt per year per square mile of contributing watershed - - - - -	.631
Average tons of silt per year - - - - -	33,505,611
Average percent of silt by weight - - - - -	.445
Drainage area in square miles (net) - - - - -	34,810

^{1/} Station was established at Rosenberg June 11, 1924.

^{2/} Station was discontinued at Rosenberg April 12, 1932.

^{3/} Station was established at Richmond April 13, 1932.

SILT DATA

Colorado River Watershed
at
LLANO STATION ON LLANO RIVER

for

Water Year 1950-1951
(October 1, 1950 to September 30, 1951)

Month	Discharge	Silt Load of Stream		Percentage of
	of Stream	tons	ac.-ft.	Dry Silt by Weight
	ac.-ft.			pct.
<u>1950</u>				
October	4,600	240	0	.004
November	3,900	200	0	.004
December	4,360	240	0	.004
<u>1951</u>				
January	4,210	400	0	.007
February	4,430	480	0	.008
March	4,330	530	0	.009
April	3,870	430	0	.008
May	12,380	5,710	4	.034
June	5,330	470	0	.006
July	530	130	0	.018
August	2,580	520	0	.015
September	3,630	1,000	1	.020
Totals	54,150	10,350	7 *	

U.S.G.S. yearly discharge in acre-feet - - - - -	54,150
Total silt for year in acre-feet - - - - -	7
Acre-feet of silt per year per square mile of contributing watershed - - - - -	.002
Average percent of silt by weight for year - - - - -	.014
Drainage area in square miles (net) - - - - -	4,000

* Includes months of small silt tons

SUMMARY OF SILT DATA

for

Colorado River Watershed

Stream: LLANO (Samples were taken at U.S.
 Station: LLANO Gaging Station $\frac{1}{2}$ mile down-
 Sampler: Mrs. Tracy M. Ward stream from bridge on State
 Highway No. 16)

Water Year	Discharge	Silt Load of Stream		Average
	of Stream	tons	ac.-ft.	Percentage of Dry Silt by Weight
	ac.-ft.			pct.
1941-42 ^{1/}	65,990	252,700	166	.281
1942-43	235,470	381,560	250	.119
1943-44	196,070	120,450	79	.045
1944-45	156,920	90,120	60	.042
1945-46	142,740	249,740	164	.129
1946-47	141,550	28,750	18	.015
1947-48	327,420	1,471,400	965	.330
1948-49	187,600	82,260	53	.032
1949-50	113,980	14,300	8	.009
1950-51	<u>54,150</u>	<u>10,350</u>	<u>7</u>	.014
TOTALS	1,621,890	2,701,630	1,770	

For period of 9.167 years

Average discharge in acre-feet per year - - - - -	176,927
Average acre-feet of silt per year - - - - -	193
Average acre-feet of silt per year per square mile of contributing watershed - - - - -	.048
Average tons of silt per year - - - - -	294,713
Average percent of silt by weight - - - - -	.122
Drainage area in square miles (net) - - - - -	4,000

^{1/} Station was established August 1, 1942.

SILT DATA

Colorado River Watershed
at
JOHNSON CITY STATION ON PEDERNALES RIVER

for

Water Year 1950-1951
(October 1, 1950 to September 30, 1951)

Month	Discharge	Silt Load of Stream		Percentage of
	of Stream	tons	ac.-ft.	Dry Silt by Weight
	ac.-ft.			pct.
<u>1950</u>				
October	190	0	0	.000
November	230	20	0	.006
December	510	20	0	.003
<u>1951</u>				
January	510	10	00	.001
February	650	40	00	.005
March	1,940	5,850	4	.221
April	990	110	00	.008
May	2,620	900	1	.025
June	8,360	13,270	9	.117
July	40	0	0	.000
August	0	0	0	.000
September	1,420	3,190	2	.165
Totals	17,460	23,410	16	

U.S.G.S. yearly discharge in acre-feet - - - - -	17,460
Total silt for year in acre-feet - - - - -	16
Acre-feet of silt per year per square mile of contributing watershed - - - - -	.017
Average percent of silt by weight for year - - - - -	.098
Drainage area in square miles (net) - - - - -	947

SUMMARY OF SILT DATA

for

Colorado River Watershed

Stream: PEDERNALES
 Station: JOHNSON CITY
 Sampler: John W. Grisham

(Samples were taken from highway
 bridge on U. S. Hwy. 281, about
 $\frac{1}{2}$ miles north of Johnson City)

Water Year	Discharge	Silt Load of Stream		Average
	of Stream	tons	ac.-ft.	Percentage of Dry Silt by Weight
	ac.-ft.	tons	ac.-ft.	pct.
1941-42 ^{1/}	22,630	107,030	70	.347
1942-43	79,850	150,740	99	.139
1943-44	167,700	724,550	476	.317
1944-45	187,000	191,740	126	.075
1945-46	94,140	132,430	88	.103
1946-47	128,460	107,670	71	.062
1947-48	31,690	42,340	27	.098
1948-49	37,660	54,560	35	.106
1949-50	18,290	9,100	5	.037
1950-51	17,460	23,410	16	.098
TOTALS	784,880	1,543,570	1,013	

For period of 9.167 years

Average discharge in acre-feet per year - - - - -	85,620
Average acre-feet of silt per year - - - - -	111
Average acre-feet of silt per year per square mile of contributing watershed - - - - -	.117
Average tons of silt per year - - - - -	168,383
Average percent of silt by weight - - - - -	.144
Drainage area in square miles (net) - - - - -	947

^{1/} Station was established August 1, 1942.

SILT DATA

Colorado River Watershed
at
SAN SABA STATION ON COLORADO RIVER

for

Water Year 1950-1951
(October 1, 1950 to September 30, 1951)

Month	Discharge	Silt Load of Stream		Percentage of
	of Stream ac.-ft.	tons	ac.-ft.	Dry Silt by Weight pct.
<u>1950</u>				
October	8,090	1,030	1	.009
November	3,110	250	0	.006
December	3,590	190	0	.004
<u>1951</u>				
January	3,900	270	0	.005
February	4,640	360	0	.006
March	4,140	280	0	.005
April	6,670	1,310	1	.014
May	118,200	1,014,400	665	.630
June	219,500	833,650	547	.279
July	14,800	20,670	14	.103
August	30,290	255,710	168	.620
September	6,530	1,370	1	.015
Totals	423,460	2,129,490	1,397	

U.S.G.S. yearly discharge in acre-feet - - - - -	423,460
Total silt for year in acre-feet - - - - -	1,397
Acre-feet of silt per year per square mile of contributing watershed - - - - -	.075
Average percent of silt by weight for year - - - - -	.369
Drainage area in square miles (net) - - - - -	18,700

SUMMARY OF SILT DATA

for

Colorado River Watershed

Stream: COLORADO (Samples were taken from Red
 Station: NEAR SAN SABA Bluff bridge about midway be-
 Sampler: Robert A. Broyles tween San Saba and Lometa) 2/

Water Year	Discharge of Stream		Silt Load of Stream		Average Percentage of Dry Silt by Weight
	ac.-ft.	tons	ac.-ft.	tons	pct.
1929-30 ^{1/}	24,000	143,140	94		.439
1930-31	1,373,750	5,136,520	3,369		.275
1931-32	2,223,900	9,934,850	6,516		.328
1932-33	475,300	1,303,620	855		.201
1933-34	504,380	2,121,550	1,391		.309
1934-35	2,564,290	14,423,520	9,459		.413
1935-36	2,276,400	7,520,550	4,933		.243
1936-37	1,197,100	2,688,230	1,764		.165
1937-38	2,809,340	8,923,940	5,853		.233
1938-39	819,430	3,709,100	2,432		.333
1939-40	773,690	3,191,810	2,094		.303
1940-41	2,052,980	8,613,430	5,650		.308
1941-42	1,285,920	4,571,140	2,998		.261
1942-43	475,090	703,520	461		.109
1943-44	592,790	2,129,300	1,397		.264
1944-45	870,370	2,655,490	1,743		.224
1945-46	416,390	1,511,040	992		.267
1946-47	517,540	2,588,150	1,696		.367
1947-48	604,200	3,389,580	2,222		.412
1948-49	947,390	4,641,420	3,043		.360
1949-50	367,430	1,709,240	1,120		.342
1950-51	423,460	2,129,490	1,397		.369
TOTALS	23,595,140	93,738,630	61,479		

For period of 21.055 years

Average discharge in acre-feet per year - - - - -	1,120,643
Average acre-feet of silt per year - - - - -	2,920
Average acre-feet of silt per year per square mile of contributing watershed - - - - -	.156
Average tons of silt per year - - - - -	4,452,084
Average percent of silt by weight - - - - -	.186
Drainage area in square miles (net) - - - - -	18,700

^{1/} Station was established September 11, 1930.

^{2/} Water samples were discontinued at old Red Bluff bridge and started one-half mile upstream at the new Red Bluff bridge on May 24, 1940.

SILT DATA

Colorado River Watershed
at
INKS DAM STATION ON COLORADO RIVER

for

Water Year 1950-1951
(October 1, 1950 to September 30, 1951)

Month	Discharge of Stream		Silt Load of Stream		Percentage of Dry Silt by Weight pct.	
	ac.-ft.	tons	ac.-ft.	tons		
<u>1950</u>						
October	8,120	400	0		.004	
November	23,080	1,040	1		.003	
December	9,480	260	}		.002	
<u>1951</u>						
January	4,230	120		}-----		.002
February	25,910	700			1	.002
March	6,840	280			.003	
April	23,890	860	1		.003	
May	88,450	3,700	2		.003	
June	113,800	3,490	2		.002	
July	99,000	5,430	4		.004	
August	134,520	7,970	5		.004	
September	80,810	2,200	2		.002	
Totals	618,130	26,450	18			

<u>1/</u> Yearly discharge in acre-feet - - - - -	618,130
Total silt for year in acre-feet - - - - -	26,450
Acre-feet of silt per year per square mile of contributing watershed - - - - -	---
Average percent of silt by weight for year - - - - -	.003
Drainage area in square miles (net) - - - - -	---

1/ Discharge figures for this station obtained from
Lower Colorado River Authority - - - - -

SUMMARY OF SILT DATA

for

Colorado River Watershed

Stream: COLORADO
 Station: INKS DAM
 Sampler: Lloyd Myers

(Samples were taken from tailrace)

Water Year	Discharge	Silt Load of Stream		Average
	of Stream	tons	ac.-ft.	Percentage of Dry Silt by Weight
	ac.-ft.	tons	ac.-ft.	pct.
1941-42 ^{1/}	285,200	41,270	27	.011
1942-43	662,460	67,090	44	.007
1943-44	768,040	127,980	84	.012
1944-45	751,950	157,540	104	.015
1945-46	678,460	134,030	88	.015
1946-47	498,980	27,870	20	.004
1947-48	580,500	56,700	38	.007
1948-49	582,660	30,170	18	.004
1949-50	319,340	14,240	9	.003
1950-51	<u>618,130</u>	<u>26,450</u>	<u>18</u>	.003
TOTALS	5,745,720	683,340	450	

For period of 9.167 years

Average discharge in acre-feet per year - - - - -	626,783
Average acre-feet of silt per year - - - - -	49
Average acre-feet of silt per year per square mile of contributing watershed - - - - -	---
Average tons of silt per year - - - - -	74,543
Average percent of silt by weight - - - - -	.009
Drainage area in square miles (net) - - - - -	---

^{1/} Station was established August 1, 1942.

SILT DATA

Colorado River Watershed
at
BUCHANAN DAM STATION ON COLORADO RIVER

for

Water Year 1950-1951
(October 1, 1950 to September 30, 1951)

Month	Discharge of Stream		Silt Load of Stream		Percentage of Dry Silt by Weight
	ac.-ft.	tons	ac.-ft.	pct.	
<u>1950</u>					
October	8,120	300	0	.003	
November	23,080	690	0	.002	
December	9,470	260	0	.002	
<u>1951</u>					
January	4,230	120	0	.002	
February	25,910	1,020	1	.003	
March	6,840	210	0	.002	
April	23,890	1,050	1	.003	
May	88,450	4,390	3	.004	
June	113,790	6,830	4	.004	
July	99,000	6,420	4	.005	
August	134,520	7,230	5	.004	
September	80,810	2,910	2	.003	
Totals	618,110	31,430	20		

<u>1/</u> Yearly discharge in acre-feet - - - - -	618,110
Total silt for year in acre-feet - - - - -	20
Acre-feet of silt per year per square mile of contributing watershed - - - - -	---
Average percent of silt by weight for year - - - - -	.004
Drainage area in square miles (net) - - - - -	---

1/ Discharge figures for this station obtained from Lower Colorado River Authority.

SUMMARY OF SILT DATA

for

Colorado River Watershed

Stream: COLORADO
 Station: BUCHANAN DAM (Samples taken at power house)
 Sampler: Lloyd Myers

Water Year	Discharge	Silt Load of Stream		Average
	of Stream	tons	ac.-ft.	Percentage of Dry Silt by Weight
	ac.-ft.	tons	ac.-ft.	pct.
1947-48 ^{1/}	576,440	46,530	30	.006
1948-49	563,730	35,300	24	.005
1949-50	319,340	16,910	13	.004
1950-51	<u>618,110</u>	<u>31,430</u>	<u>20</u>	.004
TOTALS	2,077,620	130,170	87	

For period of 4.000 years

Average discharge in acre-feet per year - - - - -	519,405
Average acre-feet of silt per year - - - - -	22
Average acre-feet of silt per year per square mile of contributing watershed - - - - -	---
Average tons of silt per year - - - - -	32,543
Average percent of silt by weight - - - - -	.005
Drainage area in square miles (net) - - - - -	---

^{1/} Station was established October 1, 1947.

SILT DATA

Colorado River Watershed
at
AUSTIN STATION ON COLORADO RIVER

for

Water Year 1950-1951
(October 1, 1950 to September 30, 1951)

Month	Discharge	Silt Load of Stream		Percentage of
	of Stream ac.-ft.	tons	ac.-ft.	Dry Silt by Weight pct.
<u>1950</u>				
October	35,410	1,800	1	.004
November	41,490	3,450	2	.006
December	45,120	10,350	7	.017
<u>1951</u>				
January	50,790	2,750	2	.004
February	35,710	2,780	2	.006
March	14,470	480	0	.002
April	44,890	2,830	2	.005
May	107,600	7,530	5	.005
June	98,330	8,460	6	.006
July	120,900	7,790	5	.005
August	121,900	9,480	6	.006
September	47,950	2,700	2	.004
Totals	764,560	60,400	40	

U.S.G.S. yearly discharge in acre-feet - - - - - 764,560

Total silt for year in acre-feet - - - - - 40

Acres-feet of silt per year per square mile
of contributing watershed - - - - - ---

Average percent of silt by weight for year - - - - - .006

Drainage area in square miles (net) - - - - - ---

SUMMARY OF SILT DATA

for

Colorado River Watershed

Stream: COLORADO
 Station: AUSTIN (Samples taken from Montopolis Bridge)
 Sampler: Mrs. G. L. Pfliler

Water Year	Discharge	Silt Load of Stream		Average
	of Stream	tons	ac.-ft.	Percentage of Dry Silt by Weight
	ac.-ft.	tons	ac.-ft.	pct.
1936-37 ^{1/}	48,040	1,830	1	.003
1937-38*	3,609,570	8,881,220	5,826	.181
1938-39 ^{2/}	986,630	735,150	481	.055
1939-40*	1,334,120	906,750	596	.050
1940-41	3,869,250	979,240	642	.019
1941-42	986,440	121,570	80	.009
1942-43	1,787,770	328,050	215	.013
1943-44	1,392,380	186,590	122	.010
1944-45	1,750,770	444,540	292	.019
1945-46	1,554,930	256,770	170	.012
1946-47	1,523,070	234,770	155	.011
1947-48	957,750	122,060	82	.009
1948-49	878,750	104,440	67	.009
1949-50	914,530	71,700	49	.006
1950-51	764,560	60,400	40	.006
TOTALS	22,358,560	13,435,080	8,818	

For period of 14.164 years

Average discharge in acre-feet per year - - - - -	1,578,548
Average acre-feet of silt per year - - - - -	623
Average acre-feet of silt per year per square mile of contributing watershed - - - - -	.024
Average tons of silt per year - - - - -	948,537
Average percent of silt by weight - - - - -	.044
Drainage area in square miles (net) - - - - -	26,260

^{1/} Station was established August 2, 1937, and samples taken from Congress Avenue bridge.

^{2/} Samples taken from Montopolis Bridge.

* Rehabilitation of the old Austin Dam (now termed Tom Miller Dam) was started August 1, 1938. This construction at times doubtless distorted the silt load of samples which were taken from 1½ to 4 miles downstream therefrom. Rehabilitation was completed and the impounding of water was begun on January 7, 1940.

SILT DATA

Guadalupe River Watershed
at
SPRING BRANCH STATION ON GUADALUPE RIVER

for

Water Year 1950-1951
(October 1, 1950 to September 30, 1951)

Month	Discharge of Stream ac.-ft.	Silt Load of Stream tons	ac.-ft.	Percentage of Dry Silt by Weight pct.
<u>1950</u>				
October	2,010	190	0	.007
November	2,140	160	0	.005
December	2,960	160	0	.004
<u>1951</u>				
January	2,950	150	0	.004
February	2,980	190	0	.005
March	5,070	900	1	.013
April	3,930	520	0	.010
May	11,170	10,250	7	.067
June	7,090	2,220	1	.023
July	820	90	0	.008
August	60	0	0	.000
September	50	0	0	.000
Totals	41,230	14,830	9	

U.S.G.S. yearly discharge in acre-feet - - - - -	41,230
Total silt for year in acre-feet - - - - -	9
Acre-feet of silt per year per square mile of contributing watershed - - - - -	.006
Average percent of silt by weight for year - - - - -	.026
Drainage area in square miles (net) - - - - -	1,432

SUMMARY OF SILT DATA

for

Guadalupe River Watershed

Stream: GUADALUPE (Samples taken 4 miles southeast
 Station: SPRING BRANCH of Spring Branch from bridge on
 Sampler: Alfred Beierle old Highway No. 46)

Water Year	Discharge	Silt Load of Stream		Average
	of Stream	tons	ac.-ft.	Percentage of Dry Silt by Weight
	ac.-ft.	tons	ac.-ft.	pct.
1941-42 ^{1/}	167,150	164,150	108	.072
1942-43	145,610	79,630	52	.040
1943-44	272,850	401,650	262	.108
1944-45	304,860	190,830	126	.046
1945-46	185,080	148,700	96	.059
1946-47	307,960	128,040	84	.031
1947-48	59,460	60,110	38	.074
1948-49	119,610	50,240	33	.031
1949-50	63,680	34,430	20	.040
1950-51	<u>41,230</u>	<u>14,830</u>	<u>9</u>	.026
TOTALS	1,667,490	1,272,610	828	

For period of 9.748 years

Average discharge in acre-feet per year	- - - - -	171,060
Average acre-feet of silt per year	- - - - -	85
Average acre-feet of silt per year per square mile of contributing watershed	- - - - -	.059
Average tons of silt per year	- - - - -	130,551
Average percent of silt by weight	- - - - -	.056
Drainage area in square miles (net)	- - - - -	1,432

^{1/} Station was established January 1, 1942.

SILT DATA

Guadalupe River Watershed
at
VICTORIA STATION ON GUADALUPE RIVER

for

Water Year 1950-1951
(October 1, 1950 to September 30, 1951)

Month	Discharge	Silt Load of Stream		Percentage of
	of Stream	tons	ac.-ft.	Dry Silt by Weight
	ac.-ft.			pct.
<u>1950</u>				
October	21,800	1,700	1	.006
November	21,040	1,960	1	.007
December	25,120	1,590	1	.005
<u>1951</u>				
January	24,170	1,390	1	.004
February	23,530	1,380	1	.004
March	26,280	1,160	1	.003
April	27,090	1,480	1	.004
May	34,690	4,580	3	.010
June	135,600	193,980	127	.105
July	19,060	2,260	1	.009
August	11,430	680	1	.004
September	22,340	2,970	2	.010
Totals	392,150	215,130	141	

U.S.G.S. yearly discharge in acre-feet - - - - -	392,150
Total silt for year in acre-feet - - - - -	215,130
Acre-feet of silt per year per square mile of contributing watershed - - - - -	.027
Average percent of silt by weight for year - - - - -	.040
Drainage area in square miles (net) - - - - -	5,311

SUMMARY OF SILT DATA

for

Guadalupe River Watershed

Stream: GUADALUPE

Station: VICTORIA

(Samples taken from bridge on

Sampler: A. E. Anders

U. S. Highway No. 59)

Water Year	Discharge	Silt Load of Stream		Average
	of Stream	tons	ac.-ft.	Percentage of Dry Silt by Weight
	ac.-ft.	tons	ac.-ft.	pet.
1944-45 ^{1/}	38,430	19,480	13	.037
1945-46	1,319,520	949,130	624	.053
1946-47	1,595,300	777,690	511	.036
1947-48	509,960	169,560	111	.024
1948-49	871,660	607,450	398	.051
1949-50	767,750	430,030	282	.041
1950-51	392,150	215,130	141	.040
TOTALS	5,494,770	3,168,470	2,080	

For period of 6.083 years

Average discharge in acre-feet per year - - - - -	903,299
Average acre-feet of silt per year - - - - -	342
Average acre-feet of silt per year per square mile of contributing watershed - - - - -	.064
Average tons of silt per year - - - - -	520,873
Average percent of silt by weight - - - - -	.042
Drainage area in square miles (net) - - - - -	5,311

^{1/} Station was established September 1, 1945. Record for one month.

SILT DATA

Lavaca River Watershed
at
EDNA STATION ON LAVACA RIVER

for

Water Year 1950-1951
(October 1, 1950 to September 30, 1951)

Month	Discharge	Silt Load of Stream		Percentage of
	of Stream	tons	ac.-ft.	Dry Silt by Weight
	ac.-ft.			pct.
<u>1950</u>				
October	320	50	0	.011
November	340	20	0	.004
December	670	40	0	.004
<u>1951</u>				
January	910	50	0	.004
February	1,000	40	0	.003
March	1,200	110	0	.007
April	940	650	0	.051
May	700	90	0	.009
June	19,170	37,580	25	.144
July	420	40	0	.007
August	120	10	0	.006
September	8,420	15,550	10	.136
Totals	34,210	54,230	35	

U.S.G.S. yearly discharge in acre-feet - - - - - 34,210

Total silt for year in acre-feet - - - - - 35

Acre-feet of silt per year per square mile
of contributing watershed - - - - - .039

Average percent of silt by weight for year - - - - - .116

Drainage area in square miles (net) - - - - - 887

SUMMARY OF SILT DATA

for

Lavaca River Watershed

Stream: LAVACA (Samples taken from bridge on
 Station: EDNA U.S. Highway No. 59 between
 Sampler: Mrs. Ida Berryhill Victoria and Edna)

Water Year	Discharge	Silt Load of Stream		Average
	of Stream	tons	ac.-ft.	Percentage of Dry Silt by Weight
	ac.-ft.	tons	ac.-ft.	pct.
1944-45 ^{1/}	980	570	0	.000
1945-46	266,330	327,240	215	.090
1946-47	250,340	192,850	126	.057
1947-48	114,240	98,200	66	.063
1948-49	105,870	205,400	134	.143
1949-50	90,950	119,490	78	.096
1950-51	<u>34,210</u>	<u>54,230</u>	<u>35</u>	.116
TOTALS	862,920	997,980	654	

For period of 6.083 years

Average discharge in acre-feet per year	- - - - -	141,858
Average acre-feet of silt per year	- - - - -	108
Average acre-feet of silt per year per square mile of contributing watershed	- - - - -	.122
Average tons of silt per year	- - - - -	164,060
Average percent of silt by weight	- - - - -	.085
Drainage area in square miles (net)	- - - - -	887

^{1/}Station established September 1, 1945.

SILT DATA

Neches River Watershed
at
HORGER STATION ON ANGELINA RIVER

for

Water Year 1950-1951
(October 1, 1950 to September 30, 1951)

Month	Discharge	Silt Load of Stream		Percentage of
	of Stream	tons	ac.-ft.	Dry Silt by Weight
	ac.-ft.	tons	ac.-ft.	pct.
<u>1950</u>				
October	22,580	1,490	1	.005
November	27,290	3,250	2	.009
December	37,610	4,870	3	.010
<u>1951</u>				
January	77,020	24,300	16	.023
February	106,900	16,050	11	.011
March	160,300	26,260	17	.012
April	166,300	27,170	18	.012
May	53,990	9,560	6	.013
June	31,680	4,310	3	.010
July	9,570	1,300	1	.010
August	2,880	310	0	.008
September	4,840	590	0	.009
Totals	700,960	119,460	78	

U.S.G.S. yearly discharge in acre-feet - - - - -	700,960
Total silt for year in acre-feet - - - - -	78
Acre-feet of silt per year per square mile of contributing watershed - - - - -	.023
Average percent of silt by weight for year - - - - -	.013
Drainage area in square miles (net) - - - - -	3,435

SUMMARY OF SILT DATA

for

Neches River Watershed

Stream: ANGELINA (Samples taken from bridge on
 Station: HORGER State Highway No. 63 between
 Sampler: D. W. Moyer Zavalla and Jasper)

Water Year	Discharge	Silt Load of Stream		Average
	of Stream	tons	ac.-ft.	Percentage of Dry Silt by Weight
	ac.-ft.	tons	ac.-ft.	pct.
1944-45 ^{1/}	19,470	11,020	7	.042
1945-46	3,869,300	1,826,050	1,198	.035
1946-47	3,200,750	393,530	259	.009
1947-48	1,619,040	227,070	149	.010
1948-49	1,544,530	276,680	180	.013
1949-50	3,690,020	481,440	317	.010
1950-51	<u>700,960</u>	<u>119,460</u>	<u>78</u>	.017
TOTALS	14,644,070	3,335,250	2,188	

For period of 6.083 years

Average discharge in acre-feet per year - - - - -	2,407,376
Average acre-feet of silt per year - - - - -	360
Average acre-feet of silt per year per square mile of contributing watershed - - - - -	.105
Average tons of silt per year - - - - -	548,290
Average percent of silt by weight - - - - -	.017
Drainage area in square miles (net) - - - - -	3,435

^{1/} Station was established September 1, 1945.

SILT DATA

Neches River Watershed
at
ROCKLAND STATION ON NECHES RIVER

for

Water Year 1950-1951
(October 1, 1950 to September 30, 1951)

Month	Discharge of Stream		Silt Load of Stream		Percentage of Dry Silt by Weight
	ac.-ft.	tons	ac.-ft.	tons	
<u>1950</u>					
October	11,480	760	1		.005
November	11,700	810	1		.005
December	18,890	1,170	1		.005
<u>1951</u>					
January	29,740	2,370	2		.006
February	46,600	4,640	3		.007
March	94,600	7,750	5		.006
April	98,550	7,710	5		.006
May	38,330	8,260	5		.016
June	24,180	3,680	2		.011
July	12,950	1,510	1		.009
August	2,520	260	0		.008
September	4,500	530	0		.009
Totals	394,040	39,450	26		

U.S.G.S. yearly discharge in acre-feet - - - - -	394,040
Total silt for year in acre-feet - - - - -	39,450
Acre-feet of silt per year per square mile of contributing watershed - - - - -	.007
Average percent of silt by weight for year - - - - -	.007
Drainage area in square miles (net) - - - - -	3,539

SUMMARY OF SILT DATA

for

Neches River Watershed

Stream: NECHES (Samples were taken from bridge
 Station: ROCKLAND on U. S. Highway 69 between
 Sampler: George W. Jones Woodville and Lufkin)

Water Year	Discharge	Silt Load of Stream		Average
	of Stream	tons	ac.-ft.	Percentage of Dry Silt by Weight
	ac.-ft.	tons	ac.-ft.	pct.
1929-30 ^{1/}	10,620	290	0	.002
1930-31	1,490,250	229,220	151	.011
1931-32	2,560,930	193,940	128	.006
1932-33	1,395,940	144,700	95	.008
1933-34	1,552,630	174,070	112	.008
1934-35	2,601,910	297,100	194	.008
1935-36	1,040,600	140,280	91	.010
1936-37	928,420	110,180	71	.009
1937-38	1,400,070	225,940	147	.012
1938-39	854,380	140,590	91	.012
1939-40	1,097,590	227,590	149	.015
1940-41	3,578,370	586,140	384	.012
1941-42	2,522,390	550,920	361	.016
1942-43	748,520	316,090	207	.031
1943-44	3,230,410	1,865,580	1,223	.042
1944-45	3,396,060	1,967,220	1,290	.043
1945-46	3,534,920	1,285,240	845	.027
1946-47	3,255,520	379,210	249	.009
1947-48	1,250,360	118,760	77	.007
1948-49	1,172,870	183,820	119	.012
1949-50	3,824,440	330,240	216	.009
1950-51	394,040	39,450	26	.007
TOTALS	41,841,240	9,506,570	6,226	

For period of 21.148 years

Average discharge in acre-feet per year - - - - -	1,978,496
Average acre-feet of silt per year - - - - -	294
Average acre-feet of silt per year per square mile of contributing watershed - - - - -	.083
Average tons of silt per year - - - - -	449,526
Average percent of silt by weight - - - - -	.017
Drainage area in square miles (net) - - - - -	3,539

^{1/} Station was established August 8, 1930.

SILT DATA

Nueces River Watershed
at
COTULLA STATION ON NUECES RIVER

for

Water Year 1950-1951
(October 1, 1950 to September 30, 1951)

Month	Discharge	Silt Load of Stream		Percentage of
	of Stream	tons	ac.-ft.	Dry Silt by Weight
	ac.-ft.			pct.
<u>1950</u>				
October	1,990	370	0	.014
November	0	0	0	.000
December	0	0	0	.000
<u>1951</u>				
January	0	0	0	.000
February	0	0	0	.000
March	0	0	0	.000
April	0	0	0	.000
May	25,290	9,090	6	.026
June	3,770	550	1	.011
July	0	0	0	.000
August	0	0	0	.000
September	0	0	0	.000
Totals	31,050	10,010	7	

U.S.G.S. yearly discharge in acre-feet - - - - -	31,050
Total silt for year in acre-feet - - - - -	7
Acre-feet of silt per year per square mile of contributing watershed - - - - -	.001
Average percent of silt by weight for year - - - - -	.024
Drainage area in square miles (net) - - - - -	5,260

SUMMARY OF SILT DATA

for

Nueces River Watershed

Stream: NUECES
 Station: COTULLA (Samples taken from highway
 Sampler: J. G. Jennings bridge in Cotulla)

Water Year	Discharge	Silt Load of Stream		Average
	of Stream	tons	ac.-ft.	Percentage of Dry Silt by Weight
	ac.-ft.	tons	ac.-ft.	pct.
1941-42 ^{1/}	141,380	64,130	42	.033
1942-43	64,240	33,270	22	.038
1943-44	482,520	367,860	241	.056
1944-45	82,440	65,460	43	.058
1945-46	347,610	284,210	186	.060
1946-47	92,610	16,550	11	.013
1947-48	72,900	29,100	19	.029
1948-49	277,520	115,640	75	.031
1949-50	57,760	18,550	12	.024
1950-51	<u>31,050</u>	<u>10,010</u>	<u>7</u>	.024
TOTALS	1,650,030	1,004,780	658	

For period of 9.748 years

Average discharge in acre-feet per year	- - - - -	169,269
Average acre-feet of silt per year	- - - - -	68
Average acre-feet of silt per year per square mile of contributing watershed	- - - - -	.013
Average tons of silt per year	- - - - -	103,076
Average percent of silt by weight	- - - - -	.045
Drainage area in square miles (net)	- - - - -	5,260

^{1/} Station was established January 1, 1942.

SILT DATA

Nueces River Watershed
at
THREE RIVERS STATION ON NUECES RIVER

for

Water Year 1950-1951
(October 1, 1950 to September 30, 1951)

Month	Discharge of Stream ac.-ft.	Silt Load of Stream		Percentage of Dry Silt by Weight pct.
		tons	ac.-ft.	
<u>1950</u>				
October	17,270	8,970	6	.038
November	0	0	0	.000
December	40	0	0	.000
<u>1951</u>				
January	240	30	0	.018
February	320	40	0	.009
March	1,160	240	0	.015
April	580	50	0	.006
May	92,980	192,710	126	.152
June	139,700	210,020	138	.110
July	580	50	0	.006
August	270	40	0	.011
September	153,200	195,610	128	.094
Totals	406,340	607,760	398	

U.S.G.S. yearly discharge in acre-feet - - - - -	406,340
Total silt for year in acre-feet - - - - -	398
Acre-feet of silt per year per square mile of contributing watershed - - - - -	.026
Average percent of silt by weight for year - - - - -	.110
Drainage area in square miles (net) - - - - -	15,600

SUMMARY OF SILT DATA

for

Nueces River Watershed

Stream: NUECES (Samples were taken 2 miles south
 Station: NEAR THREE RIVERS of Three Rivers from railroad
 Sampler: Carl Franze bridge, except at extreme low
 stage when samples were taken
 at low dam)

Water Year	Discharge of Stream		Silt Load of Stream		Average Percentage of Dry Silt by Weight
	ac.-ft.	tons	ac.-ft.	pct.	
1927-28 ^{1/}	318,930	617,920	405	.142	
1928-29	741,300	1,303,600	855	.129	
1929-30	596,510	721,440	473	.089	
1930-31	455,880	443,420	291	.071	
1931-32	1,006,200	581,880	381	.042	
1932-33	287,120	275,050	179	.070	
1933-34	253,800	668,320	438	.193	
1934-35	2,547,150	2,383,630	1,565	.069	
1935-36	768,200	752,320	494	.072	
1936-37	318,050	142,270	94	.033	
1937-38	479,730	771,540	506	.118	
1938-39	306,600	450,960	297	.108	
1939-40	840,190	1,035,600	679	.091	
1940-41	1,300,860	1,635,320	1,073	.092	
1941-42	1,107,790	987,340	648	.065	
1942-43	260,470	323,990	213	.091	
1943-44	700,090	668,660	439	.070	
1944-45	297,070	590,010	387	.146	
1945-46	927,400	1,134,770	744	.090	
1946-47	810,070	578,310	379	.052	
1947-48	128,330	253,400	164	.145	
1948-49	780,920	765,590	500	.072	
1949-50	266,300	385,840	253	.106	
1950-51	406,340	607,760	398	.110	
TOTALS	15,905,300	18,078,940	11,855		

For period of 24,000 years

Average discharge in acre-feet per year - - - - -	662,721
Average acre-feet of silt per year - - - - -	494
Average acre-feet of silt per year per square mile of contributing watershed - - - - -	.032
Average tons of silt per year - - - - -	753,289
Average percent of silt by weight - - - - -	.084
Drainage area in square miles (net) - - - - -	15,600

^{1/} Station was established October 1, 1927.

SILT DATA

Nueces River Watershed
at
CORPUS CHRISTI DAM STATION ON NUECES RIVER

for

Water Year 1950-1951
(October 1, 1950 to September 30, 1951)

Month	Discharge	Silt Load of Stream		Percentage
	of Stream ac.-ft.	tons	ac.-ft.	of Dry Silt by Weight pct.
<u>1950</u>				
October	13,290	570	0	.003
November	3,550	310	0	.006
December	2,930	160	0	.004
<u>1951</u>				
January	2,610	200	0	.006
February	2,500	230	0	.007
March	2,620	200	0	.006
April	2,860	150	0	.004
May	59,640	8,970	7	.011
June	137,900	33,210	22	.018
July	4,120	510	0	.009
August	4,140	450	0	.008
September	186,000	61,780	41	.024
Totals	422,160	106,740	70	

U.S.G.S. yearly discharge in acre-feet - - - - - 422,160

Total silt for year in acre-feet - - - - - 70

Acre-feet of silt per year per square mile
of contributing watershed - - - - - ---

Average percent of silt by weight for year - - - - - .019

Drainage area in square miles (net) - - - - - ---

SUMMARY OF SILT DATA

for
Nueces River Watershed

Stream: NUECES
 Station: CORPUS CHRISTI DAM (Samples taken below and
 Sampler: Eddie Wright adjacent to outlet gates)

Water Year	Discharge of Stream		Silt Load of Stream		Average Percentage of Dry Silt by Weight pct.
	ac.-ft.	tons	ac.-ft.	tons	
1941-42 ^{1/}	1,202,820	546,500	358		.033
1942-43	249,640	44,790	29		.013
1943-44	740,310	323,550	212		.032
1944-45	273,820	125,070	81		.034
1945-46	936,910	350,430	231		.027
1946-47	921,510	244,730	160		.020
1947-48	107,320	15,170	8		.010
1948-49	887,240	212,770	137		.018
1949-50	246,370	29,160	18		.009
1950-51	422,160	106,740	70		.019
TOTALS	5,988,100	1,998,910	1,304		

For period of 9.660 years

Average discharge in acre-feet per year	- - - - -	619,886
Average acre-feet of silt per year	- - - - -	135
Average acre-feet of silt per year per square mile of contributing watershed	- - - - -	---
Average tons of silt per year	- - - - -	206,927
Average percent of silt by weight	- - - - -	.025
Drainage area in square miles (net)	- - - - -	---

^{1/} Station was established February 2, 1942.

SILT DATA

Sabine River Watershed
at
LOGANSFORT STATION ON SABINE RIVER

for

Water Year 1950-1951
(October 1, 1950 to September 30, 1951)

Month	Discharge of Stream		Silt Load of Stream		Percentage of Dry Silt by Weight pct.
	ac.-ft.	tons	ac.-ft.		
<u>1950</u>					
October	32,420	5,720	4		.013
November	32,140	4,120	3		.009
December	30,420	3,120	2		.008
<u>1951</u>					
January	94,400	12,220	8		.010
February	237,600	43,300	28		.013
March	236,600	61,570	40		.019
April	120,300	23,560	15		.014
May	74,760	13,750	9		.014
June	114,900	37,000	24		.024
July	41,700	9,560	6		.017
August	6,450	860	1		.010
September	11,470	2,640	2		.017
Totals	1,033,160	217,420	142		

U.S.G.S. yearly discharge in acre-feet - - - - -	1,033,160
Total silt for year in acre-feet - - - - -	142
Acre-feet of silt per year per square mile of contributing watershed - - - - -	.029
Average percent of silt by weight for year - - - - -	.015
Drainage area in square miles (net) - - - - -	4,858

SUMMARY OF SILT DATA

for

Sabine River Watershed

Stream: SABINE (Samples were taken from U. S.
 Station: LOGANSFORT, LA. Highway 84 bridge in downtown
 Sampler: R. E. Davenport Logansport, La.)

Water Year	Discharge	Silt Load of Stream		Average
	of Stream	tons	ac.-ft.	Percentage of Dry Silt by Weight
	ac.-ft.	tons	ac.-ft.	pct.
1932-33 ^{1/}	2,545,700	503,740	330	.015
1933-34 ^{2/}	69,200	5,780	4	.006
1934-35 ^{3/}	13,910	400	0	.002
1935-36	841,410	137,020	89	.012
1936-37	1,689,660	270,430	176	.012
1937-38	3,155,000	537,990	353	.013
1938-39	1,325,580	291,500	190	.016
1939-40	1,302,990	458,990	301	.026
1940-41	4,876,180	825,330	541	.012
1941-42	3,817,160	1,439,880	944	.028
1942-43	1,716,620	999,370	655	.043
1943-44	4,193,070	3,002,050	1,969	.053
1944-45	5,996,730	4,502,820	2,953	.055
1945-46	5,137,000	2,650,320	1,738	.038
1946-47	3,318,320	553,900	363	.012
1947-48	2,820,560	452,390	298	.012
1948-49	1,882,220	391,520	255	.015
1949-50	4,225,130	934,380	610	.016
1950-51	1,033,160	217,420	142	.015
TOTALS	49,959,600	18,175,230	11,911	

For period of 17.156 years

Average discharge in acre-feet per year - - - - -	2,912,077.
Average acre-feet of silt per year - - - - -	694
Average acre-feet of silt per year per square mile of contributing watershed - - - - -	.143
Average tons of silt per year - - - - -	1,059,410
Average percent of silt by weight - - - - -	.027
Drainage area in square miles (net) - - - - -	4,858

- ^{1/} Station was established December 1, 1932.
^{2/} Station was discontinued December 27, 1933.
^{3/} Station was re-established September 1, 1935.

SILT DATA

San Antonio River Watershed
at
GOLIAD STATION ON SAN ANTONIO RIVER

for

Water Year 1950-1951
(October 1, 1950 to September 30, 1951)

Month	Discharge	Silt Load of Stream		Percentage
	of Stream ac.-ft.	tons	ac.-ft.	of Dry Silt by Weight pct.
<u>1950</u>				
October	8,070	810	1	.007
November	7,520	930	1	.009
December	8,110	1,310	1	.012
<u>1951</u>				
January	7,660	1,070	1	.010
February	11,030	3,230	2	.022
March	10,730	2,410	2	.016
April	11,610	4,370	3	.028
May	30,340	90,670	59	.220
June	66,210	194,780	128	.216
July	7,470	1,290	1	.013
August	5,540	550	0	.007
September	46,980	93,130	61	.146
Totals	221,270	394,550	260	

U.S.G.S. yearly discharge in acre-feet - - - - -	221,270
Total silt for year in acre-feet - - - - -	260
Acre-feet of silt per year per square mile of contributing watershed - - - - -	.066
Average percent of silt by weight for year - - - - -	.131
Drainage area in square miles (net) - - - - -	3,918

SUMMARY OF SILT DATA

for

San Antonio River Watershed

Stream: SAN ANTONIO

Station: GOLIAD

Sampler: Polo Perez

(Samples were taken near Goliad
from bridge on State Hwy. No. 29)

Water Year	Discharge	Silt Load of Stream		Average
	of Stream	tons	ac.-ft.	Percentage of Dry Silt by Weight
	ac.-ft.	tons	ac.-ft.	pct.
1941-42 ^{1/}	699,580	848,340	556	.089
1942-43	453,180	581,740	382	.094
1943-44	365,060	725,630	475	.146
1944-45	352,460	567,440	371	.118
1945-46	663,080	1,387,180	910	.154
1946-47	699,560	719,770	472	.076
1947-48	226,510	237,020	155	.077
1948-49	403,390	669,460	440	.122
1949-50	263,690	310,560	203	.087
1950-51	221,270	394,550	260	
TOTALS	4,347,780	6,441,690	4,224	

For period of 9.748 years

Average discharge in acre-feet per year - - - - -	446,018
Average acre-feet of silt per year - - - - -	433
Average acre-feet of silt per year per square mile of contributing watershed - - - - -	.111
Average tons of silt per year - - - - -	660,822
Average percent of silt by weight - - - - -	.109
Drainage area in square miles (net) - - - - -	3,918

^{1/} Station was established January 1, 1942.

SILT DATA

San Jacinto River Watershed
at
HUFFMAN STATION ON SAN JACINTO RIVER

for

Water Year 1950-1951
(October 1, 1950 to September 30, 1951)

Month	Discharge	Silt Load of Stream		Percentage of
	of Stream	tons	ac.-ft.	Dry Silt by Weight
	ac.-ft.			pct.
<u>1950</u>				
October	9,870	1,250	1	.009
November	7,920	690	0	.006
December	9,290	410	0	.003
<u>1951</u>				
January	13,710	2,360	2	.013
February	16,440	2,100	1	.009
March	40,210	11,660	8	.021
April	25,210	6,470	4	.019
May	9,990	1,760	1	.013
June	9,870	3,190	2	.024
July	5,570	1,100	1	.014
August	4,060	670	0	.012
September	19,100	10,040	7	.039
Totals	171,240	41,700	27	

U.S.G.S. yearly discharge in acre-feet - - - - -	171,240
Total silt for year in acre-feet - - - - -	27
Acre-feet of silt per year per square mile of contributing watershed - - - - -	.010
Average percent of silt by weight for year - - - - -	.018
Drainage area in square miles (net) - - - - -	2,791

SUMMARY OF SILT DATA

for

San Jacinto River Watershed

Stream: SAN JACINTO
 Station: HUFFMAN (Samples were taken at Sheldon
 Sampler: Phil Baker Scott Pumping Plant, City of Houston)

Water Year	Discharge	Silt Load of Stream		Average
	of Stream	tons	ac.-ft.	Percentage of Dry Silt by Weight
	ac.-ft.	tons	ac.-ft.	pct.
1944-45 <u>1/</u>	221,940	163,730	107	.054
1945-46	2,246,700	1,345,020	881	.044
1946-47	2,466,540	2,096,730	1,377	.062
1947-48	499,740	108,300	70	.016
1948-49	937,040	374,450	246	.029
1949-50	2,698,180	938,770	614	.026
1950-51	<u>171,240</u>	<u>41,700</u>	<u>27</u>	.018
TOTALS	9,241,380	5,068,700	3,322	

For period of 6.083 years

Average discharge in acre-feet per year	- - - - -	1,519,214
Average acre-feet of silt per year	- - - - -	546
Average acre-feet of silt per year per square mile of contributing watershed	- - - - -	.196
Average tons of silt per year	- - - - -	833,257
Average percent of silt by weight	- - - - -	.040
Drainage area in square miles (net)	- - - - -	2,791

1/ Station was established September 1, 1945.

SILT DATA

San Jacinto River Watershed
at
HUMBLE STATION ON SAN JACINTO RIVER

for

Water Year 1950-1951
(October 1, 1950 to September 30, 1951)

Month	Discharge	Silt Load of Stream		Percentage of
	of Stream	tons	ac.-ft.	Dry Silt by Weight
	ac.-ft.			pct.
<u>1950</u>				
October	5,680	650	0	.008
November	3,950	350	0	.006
December	4,300	350	0	.006
<u>1951</u>				
January	6,790	740	1	.008
February	10,440	1,160	1	.008
March	20,520	9,590	6	.034
April	15,140	5,340	4	.026
May	4,750	1,590	1	.025
June	4,800	1,740	1	.027
July	2,580	660	0	.019
August	1,560	320	0	.015
September	13,210	5,560	4	.031
Totals	93,720	28,050	18	

U.S.G.S. yearly discharge in acre-feet - - - - -	93,720
Total silt for year in acre-feet - - - - -	18
Acre-feet of silt per year per square mile of contributing watershed - - - - -	.010
Average percent of silt by weight for year - - - - -	.022
Drainage area in square miles (net) - - - - -	1,811

SUMMARY OF SILT DATA

for
San Jacinto River Watershed

Stream: WEST FORK OF SAN JACINTO (Samples were taken from
Station: NEAR HUMBLE highway bridge about 2 miles
Sampler: L. C. Clark north of Humble)

Water Year	Discharge of Stream		Silt Load of Stream		Average Percentage of Dry Silt by Weight
	ac.-ft.	tons	ac.-ft.	tons	pct.
1932-33 1/	253,210	144,800	93		.042
1933-34 2/	7,450	520	0		.005
1936-37 3/	12,450	1,370	1		.008
1937-38	491,940	150,650	97		.022
1938-39	319,500	120,660	77		.028
1939-40	282,680	162,070	105		.042
1940-41	2,566,090	896,050	588		.026
1941-42	909,180	373,670	245		.030
1942-43	545,760	290,820	191		.039
1943-44	881,200	660,570	434		.055
1944-45	1,577,380	1,241,490	815		.058
1945-46	1,320,330	774,810	509		.043
1946-47	1,325,000	345,140	228		.019
1947-48	284,340	41,140	25		.011
1948-49	502,390	201,420	131		.029
1949-50	502,370	152,470	100		.022
1950-51	93,720	28,050	18		.022
TOTALS	11,874,990	5,585,700	3,657		

For period of 15.337 years

Average discharge in acre-feet per year	- - - - -	774,271
Average acre-feet of silt per year	- - - - -	238
Average acre-feet of silt per year per square mile of contributing watershed	- - - - -	.131
Average tons of silt per year	- - - - -	364,198
Average percent of silt by weight	- - - - -	.035
Drainage area in square miles (net)	- - - - -	1,811

- 1/ Station was established December 1, 1932
2/ Station was discontinued December 31, 1933.
3/ Station was reestablished July 1, 1937.

SILT DATA

Trinity River Watershed
at
ROMAYOR STATION ON TRINITY RIVER

for

Water Year 1950-1951
(October 1, 1950 to September 30, 1951)

Month	Discharge	Silt Load of Stream		Percentage
	of Stream	tons	ac.-ft.	of Dry Silt by Weight
	ac.-ft.			pct.
<u>1950</u>				
October	195,600	52,380	34	.020
November	79,660	13,270	9	.012
December	55,560	6,910	5	.009
<u>1951</u>				
January	72,100	26,060	17	.027
February	139,400	139,980	92	.074
March	158,600	53,220	35	.025
April	95,200	19,040	12	.015
May	134,400	66,180	43	.036
June	577,300	403,950	265	.051
July	134,500	65,380	43	.036
August	31,580	6,390	4	.015
September	54,090	32,090	21	.044
Totals	1,727,990	884,850	580	

U.S.G.S. yearly discharge in acre-feet - - - - - 1,727,990

Total silt for year in acre-feet - - - - - 580

Acre-feet of silt per year per square mile
of contributing watershed - - - - - .032

Average percent of silt by weight for year - - - - - .038

Drainage area in square miles (net) - - - - - 17,192

SUMMARY OF SILT DATA

for

Trinity River Watershed

Stream: TRINITY
 Station: ROMAYOR (Samples taken from the
 Sampler: Claud Allen railroad bridge)

Water Year	Discharge of Stream		Silt Load of Stream		Average Percentage of Dry Silt by Weight
	ac.-ft.	tons	ac.-ft.	tons	pct.
1935-36 ^{1/}	42,130	5,220	4		.009
1936-37	3,900,920	3,481,600	2,285		.066
1937-38	6,753,160	6,741,220	4,423		.073
1938-39	2,165,150	3,199,280	2,099		.109
1939-40	3,218,170	4,999,040	3,280		.114
1940-41	12,258,630	9,657,990	6,335		.058
1941-42	9,901,100	9,447,990	6,197		.070
1942-43	4,298,370	4,914,950	3,224		.084
1943-44	7,588,430	11,433,850	7,501		.111
1944-45	12,202,840	13,559,310	8,893		.082
1945-46	8,391,500	8,643,330	5,670		.076
1946-47	7,009,180	5,290,980	3,468		.055
1947-48	4,476,720	3,284,720	2,154		.054
1948-49	4,029,430	3,411,700	2,238		.062
1949-50	8,017,800	5,538,990	3,634		.051
1950-51	1,727,990	884,850	580		.038
TOTALS	95,981,520	94,495,020	61,985		

For period of 15.142 years

Average discharge in acre-feet per year - - - - -	6,338,761
Average acre-feet of silt per year - - - - -	4,094
Average acre-feet of silt per year per square mile of contributing watershed - - - - -	.238
Average tons of silt per year - - - - -	6,240,590
Average percent of silt by weight - - - - -	.072
Drainage area in square miles (net) - - - - -	17,192

^{1/} Station was established August 10, 1936.

SUMMARY OF SILT DATA FOR SOME OF THE MAJOR TEXAS STREAMS

(For Water Year Ending September 30, 1951)

Water-shed	Stream	Silt Station	Years Samples Taken	Total Length Record	Average	Average Amount of Silt	Amt. of Silt per Sq. Mi. Watershed	Silt by Weight	Net Drainage Area	
					Runoff of Stream					ac-ft
Brazos	Salt Fork	Aspermont ^{1/}	1924-25	1.238	111,100	2,818	4,297,420	1.272	2.842	2,216
Brazos	Salt Fork	Seymour ^{1/}	1924-30	6.107	398,864	6,501	9,912,150	1.238	1.826	5,250
Brazos	Dbl.Mt.Fork	Aspermont ^{1/}	1924-33	9.244	135,280	2,665	4,062,400	1.765	2.206	1,510
Brazos	Clear Fork	Crystal Falls ^{1/}	1925-29	3.307	214,440	568	866,020	.131	.297	4,320
Brazos	Clear Fork	Eliasville ^{1/}	1924-25	1.244	177,240	529	808,630	.092	.335	5,740
Brazos	Little River	Little River ^{1/}	1924-29	4.962	419,870	752	1,147,190	.143	.201	5,253
Brazos	San Gabriel	Circleville ^{1/}	1924-29	5.403	110,744	222	339,590	.369	.225	602
Brazos	Leon	Belton ^{2/}	1945-50	4.333	339,520	353	527,417	.100	.114	3,547
Brazos	Navasota	Easterly	1942-51	9.748	304,741	183	278,974	.192	.067	949
Brazos	Brazos	South Bend	1942-51	9.710	485,834	2,575	3,924,330	.208	.593	12,360
Brazos	Brazos	Possum King Dam	1942-51	9.710	552,068	71	109,063	---	.015	---
Brazos	Brazos	Mineral Wells ^{1/}	1924-34	10.332	953,550	6,506	9,920,060	.468	.764	13,910
Brazos	Brazos	Glen Rose ^{1/}	1924-29	4.588	1,181,370	8,378	12,773,810	.537	.794	15,600
Brazos	Brazos	Waco ^{1/}	1924-33	9.254	1,717,130	10,325	15,742,010	.536	.673	19,260
Brazos	Brazos	Bryan ^{1/}	1899-02	3.419	4,156,736	39,117	---	1.340	.941*	29,190
Brazos	Brazos	Richmond	1924-51	27.306	5,526,956	21,948	33,505,611	.631	.445	34,810
Colorado	Llano	Llano	1942-51	9.167	176,927	193	294,713	.048	.122	4,000
Colorado	Pedernales	Johnson City	1942-51	9.167	85,620	111	168,383	.117	.144	947
Colorado	Colorado	San Saba	1930-51	21.055	1,120,643	2,920	4,452,084	.156	.186	18,700
Colorado	Colorado	Tow ^{1/}	1927-32	5.162	1,245,440	3,360	5,122,520	.174	.302	19,300
Colorado	Colorado	Inks Dam	1942-51	9.167	626,783	49	74,543	---	.009	---
Colorado	Colorado	Buchanan Dam	1947-51	4.000	519,405	22	32,543	---	.005	---
Colorado	Colorado	Austin ^{3/}	1937-51	14.164	1,578,548	623	948,537	.024	.044	26,260
Colorado	Colorado	Columbus-E.Lake	30-33; 37-41	6.997	3,167,710	5,898	8,991,960	.202	.209	29,140
Guadalupe	Guadalupe	Spring Branch	1942-51	9.748	171,060	85	130,551	.059	.056	1,432
Guadalupe	Guadalupe	Victoria	1945-51	6.083	903,299	342	520,873	.064	.042	5,311

* Percent of silt by volume.

^{1/} Silt by months and summary data prior to 1940 contained in Progress Report No. 1.

^{2/} Station discontinued December 31, 1949.

^{3/} Station discontinued October 31, 1941.

SUMMARY OF SILT DATA (Continued)

Watershed	Stream	Silt Station	Years Samples Taken	Total Length Record	Average Runoff of Stream	Average Amount of Silt		Amt. of Silt per Sq. Mi. Watershed	Silt by Weight	Net Drainage Area
				years	ac-ft	ac-ft	tons	ac-ft	per-cent	sq.mi.
Lavaca	Lavaca	Edna	1945-51	6.083	141,858	108	164,060	.122	.085	887
Neches	Angelina	Horger	1945-51	6.083	2,407,376	360	548,290	.105	.017	3,435
Neches	Neches	Rockland	1930-51	21.148	1,978,496	294	449,526	.083	.017	3,539
Nueces	Nueces	Cotulla	1942-51	9.748	169,269	68	103,076	.013	.045	5,260
Nueces	Nueces	Three Rivers	1927-51	24.000	662,721	494	753,289	.032	.084	15,600
Nueces	Nueces	Corpus Chr. Dam	1942-51	9.660	619,886	135	206,927	---	.025	---
Rio Grande	Rio Grande	Eagle Pass <u>4/</u>	1934-43	9.068	3,180,057	9,776	14,904,545	.078	.344	125,260
Rio Grande	Rio Grande	Roma <u>4/</u>	1929-43	14.184	4,166,619	12,588	19,192,311	.080	.338	157,204
Red	Pease	Crowell <u>5/</u>	1942-47	5.002	113,411	992	1,512,834	.412	.980	2,410
Red	Wichita	Wichita Falls <u>1/</u>	1900-02	2.014	566,420	5,516	---	1.776	.974*	3,105
Red	Red	Denison <u>1/</u>	30-33;36-37	6.260	3,326,780	13,640	20,793,380	.415	.459	32,840
Sabine	Sabine	Logansport, La. <u>4/</u>	32-33;35-51	17.156	2,912,077	694	1,059,410	.143	.027	4,858
Sabine	Sabine	Ruliff <u>6/</u>	1945-46	1.083	11,408,860	3,124	5,771,404	.331	.037	9,440
San Antonio	San Antonio	Falls City <u>1/</u>	1927-33	5.967	127,120	142	216,730	.069	.125	2,070
San Antonio	San Antonio	Goliad	1942-51	9.748	446,018	433	660,822	.111	.109	3,918
San Jacinto	West Fork	Humble	32-33;37-51	15.337	774,271	238	364,198	.131	.035	1,811
San Jacinto	San Jacinto	Huffman	1945-51	6.083	1,519,214	546	833,257	.196	.040	2,791
Trinity	Trinity	Rosser <u>7/</u>	1938-40	1.598	760,700	986	1,504,920	.122	.145	8,057
Trinity	Trinity	Romayor	1936-51	15.142	6,338,761	4,094	6,240,590	.238	.072	17,192

* Percent of silt by volume.

1/ Silt by months and summary data prior to 1940 contained in Progress Report No. 1.

4/ Station discontinued May 31, 1943.

5/ Station discontinued June 30, 1947.

6/ Station established September 1, 1945 and discontinued September 30, 1946.

7/ Station discontinued June 27, 1940.

Station	Latitude	Longitude	Time	Temperature	Humidity	Wind	Pressure	Clouds	Remarks
1	10° 00' N	150° 00' W	0000	28.0	85	10	1010	0	Clear
2	10° 00' N	150° 00' W	0100	28.0	85	10	1010	0	Clear
3	10° 00' N	150° 00' W	0200	28.0	85	10	1010	0	Clear
4	10° 00' N	150° 00' W	0300	28.0	85	10	1010	0	Clear
5	10° 00' N	150° 00' W	0400	28.0	85	10	1010	0	Clear
6	10° 00' N	150° 00' W	0500	28.0	85	10	1010	0	Clear
7	10° 00' N	150° 00' W	0600	28.0	85	10	1010	0	Clear
8	10° 00' N	150° 00' W	0700	28.0	85	10	1010	0	Clear
9	10° 00' N	150° 00' W	0800	28.0	85	10	1010	0	Clear
10	10° 00' N	150° 00' W	0900	28.0	85	10	1010	0	Clear
11	10° 00' N	150° 00' W	1000	28.0	85	10	1010	0	Clear
12	10° 00' N	150° 00' W	1100	28.0	85	10	1010	0	Clear
13	10° 00' N	150° 00' W	1200	28.0	85	10	1010	0	Clear
14	10° 00' N	150° 00' W	1300	28.0	85	10	1010	0	Clear
15	10° 00' N	150° 00' W	1400	28.0	85	10	1010	0	Clear
16	10° 00' N	150° 00' W	1500	28.0	85	10	1010	0	Clear
17	10° 00' N	150° 00' W	1600	28.0	85	10	1010	0	Clear
18	10° 00' N	150° 00' W	1700	28.0	85	10	1010	0	Clear
19	10° 00' N	150° 00' W	1800	28.0	85	10	1010	0	Clear
20	10° 00' N	150° 00' W	1900	28.0	85	10	1010	0	Clear
21	10° 00' N	150° 00' W	2000	28.0	85	10	1010	0	Clear
22	10° 00' N	150° 00' W	2100	28.0	85	10	1010	0	Clear
23	10° 00' N	150° 00' W	2200	28.0	85	10	1010	0	Clear
24	10° 00' N	150° 00' W	2300	28.0	85	10	1010	0	Clear
25	10° 00' N	150° 00' W	2400	28.0	85	10	1010	0	Clear
26	10° 00' N	150° 00' W	2500	28.0	85	10	1010	0	Clear
27	10° 00' N	150° 00' W	2600	28.0	85	10	1010	0	Clear
28	10° 00' N	150° 00' W	2700	28.0	85	10	1010	0	Clear
29	10° 00' N	150° 00' W	2800	28.0	85	10	1010	0	Clear
30	10° 00' N	150° 00' W	2900	28.0	85	10	1010	0	Clear
31	10° 00' N	150° 00' W	3000	28.0	85	10	1010	0	Clear

* Record of 1st day of voyage
 1. Sailed from Honolulu at 0800 hours on 1st day of voyage.
 2. Station 10000 at 1000 hours.
 3. Station 10000 at 1000 hours.
 4. Station 10000 at 1000 hours.
 5. Station 10000 at 1000 hours.

