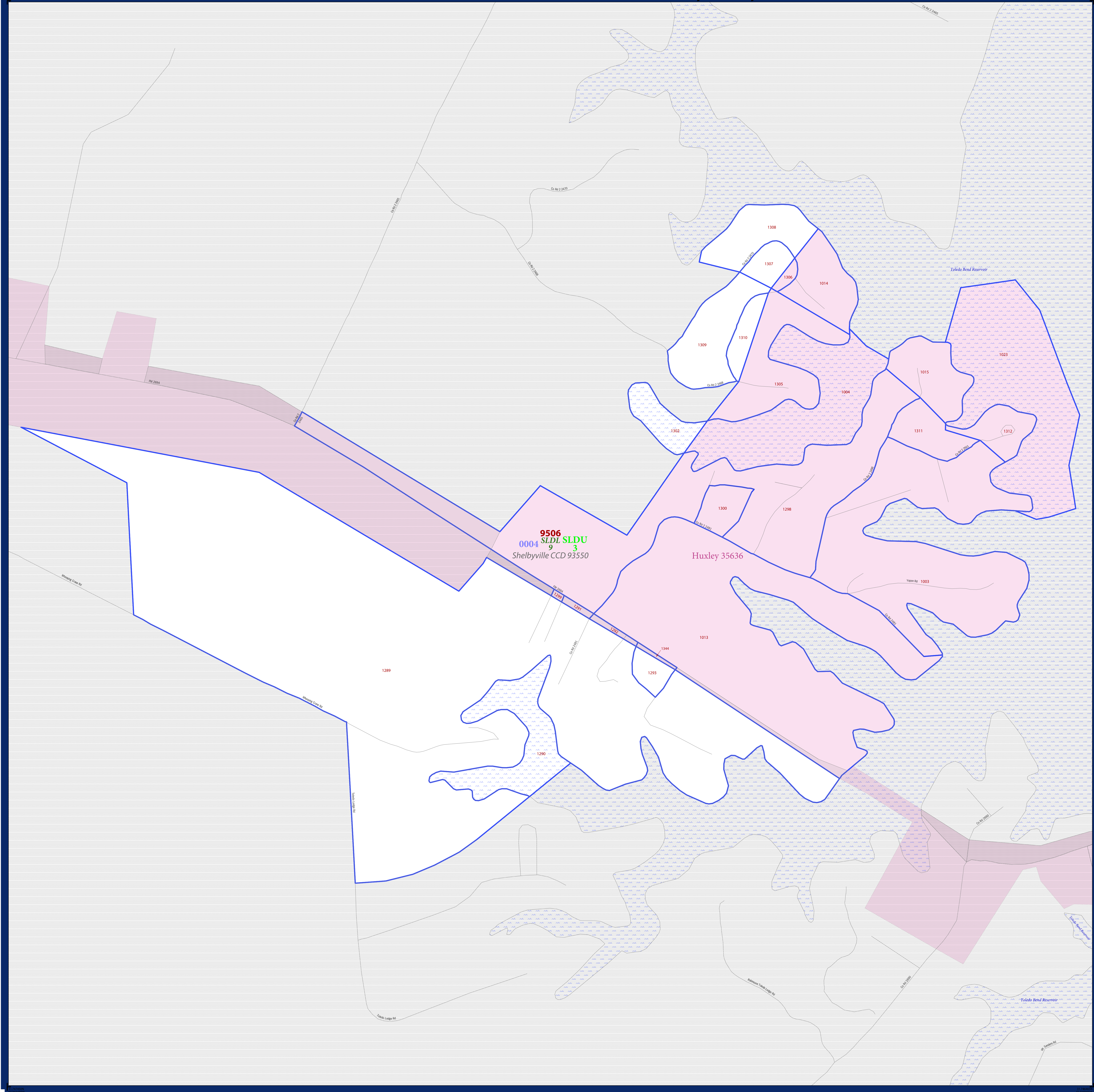


# P.L. 94-171 COUNTY BLOCK MAP (2010 CENSUS): Shelby County, TX



LEGEND	
SYMBOL DESCRIPTION	LABEL STYLE
Federal American Indian Reservation	***** L'ANSE RES 1880
Off-Reservation Trust Land, Hawaiian Home Land	+ + + + + T1880
Oklahoma Tribal Statistical Area, Alaska Native Village Statistical Area, Tribal Designated Statistical Area	◆◆◆◆◆ KAW OTSA 5340
American Indian Tribal Subdivision	●●●●● EAGLE NEST DIST 200
State American Indian Reservation	////// Tama Res 4125
State Designated Tribal Statistical Area	◆◆◆◆◆ Lumbee STSA 9815
Alaska Native Regional Corporation	▼▼▼▼▼ NANA ANRC 52120
State (or statistically equivalent entity)	NEW YORK 36
County (or statistically equivalent entity)	▣▣▣▣▣ ERIE 029
Minor Civil Division (MCD) <sup>1</sup>	○ ○ ○ ○ ○ Bristol town 07485
Census County Division (CCD), Census Subarea (CSA), Unorganized Territory (UT)	○ ○ ○ ○ ○ Jemez CCD 91650
Consolidated City	○ ○ ○ ○ ○ MILFORD 47500
Incorporated Place <sup>1,2</sup>	■■■■■ Davis 18100
Census Designated Place (CDP) <sup>2</sup>	■■■■■ Incline Village 35100
Voting District (VTD)	●●●●● 100015
State Legislative District - Upper (Senate)	■ ■ ■ ■ ■ SLDU 14
State Legislative District - Lower (House)	■ ■ ■ ■ ■ SLDL 26
Census Tract	■■■■■ 33.07
Census Block <sup>3</sup>	■■■■■ 3012

DESCRIPTION	SYMBOL	DESCRIPTION	SYMBOL
Interstate	—[I]—	Geographic Offset or Corridor	— —
U.S. Highway	—[2]—	Water Body	■ (Blue)
State Highway	—[1]—	Swamp, Marsh, or Gravel Pit/Quarry	■ (Green)
Other Road	—	Marsh Ln	■ (Light Green)
Cul-de-sac	—┐	Glacier	■ (Light Blue)
Circle	○	Military	■ (Grey)
4WD Trail, Stairway, Alley, Walkway, or Ferry	—	National or State Park, Forest, or Recreation Area	■ (Green)
Railroad	—[R]—	Airport	■ (Grey)
Pipeline or Power Line	—[P]—	Selected Mountain Peaks	▲
Ridge or Fence	—	Inset Area	■ (Grey)
Property Line	—	Outside Subject Area	■ (Grey)
Perennial Stream	—[S]—		
Intermittent Stream	—[S]—		
Nonvisible Boundary or Feature Not Elsewhere Classified	—		

Where state, county, and/or MCD/CCD boundaries coincide, the map shows the boundary symbol for only the highest-ranking of these boundaries. Where American Indian reservation and American Indian tribal subdivision boundaries coincide, the map shows only the American Indian reservation boundaries. Where Oklahoma tribal statistical area boundaries and American Indian tribal subdivision boundaries coincide, the map shows only the Oklahoma tribal statistical area boundaries.

1 A " " following an MCD name denotes a false MCD. A " " following a place name indicates that a false MCD exists with the same name and FIPS code as the place; the false MCD label is not shown.

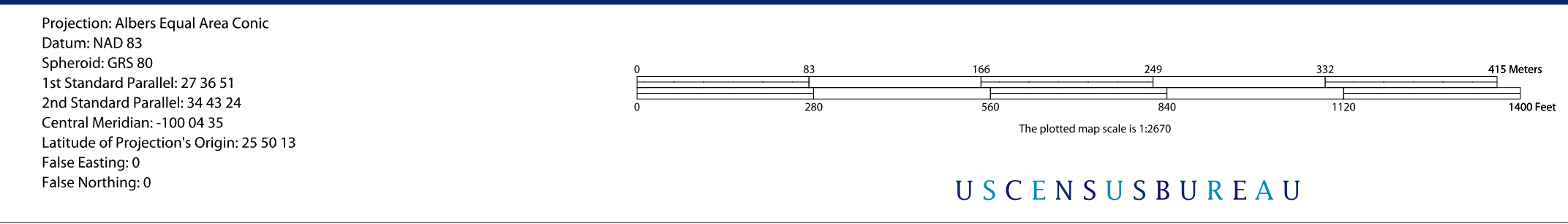
2 Place label color correlates to the place fill color.

3 A " " following a block number indicates that the block number is repeated elsewhere in the block.

All legal boundaries and names are as of January 1, 2010. The boundaries shown on this map are for Census Bureau statistical data collection and tabulation purposes only; their depiction and designation for statistical purposes does not constitute a determination of jurisdictional authority or rights of ownership or entitlement.

Geographic Vintage: 2010 Census (reference date: January 1, 2010)  
 Data Source: U.S. Census Bureau's MA7/TIGER database (TAB100148)  
 Map Created by Geography Division: December 10, 2010

U.S. DEPARTMENT OF COMMERCE Economics and Statistics Administration U.S. Census Bureau



INSET SHEET F1  
 Total Sheets: 23  
 Index Sheets: 1  
 Parent Sheets: 16  
 Inset Sheets: 6

NAME: Shelby County (419)  
 ENTITY TYPE: County or statistically equivalent entity  
 ST: Texas (48)

Location of County within State

Sheet Location within Entity

2010 PL BLOCK MAP (INSET)  
 2010M48F001