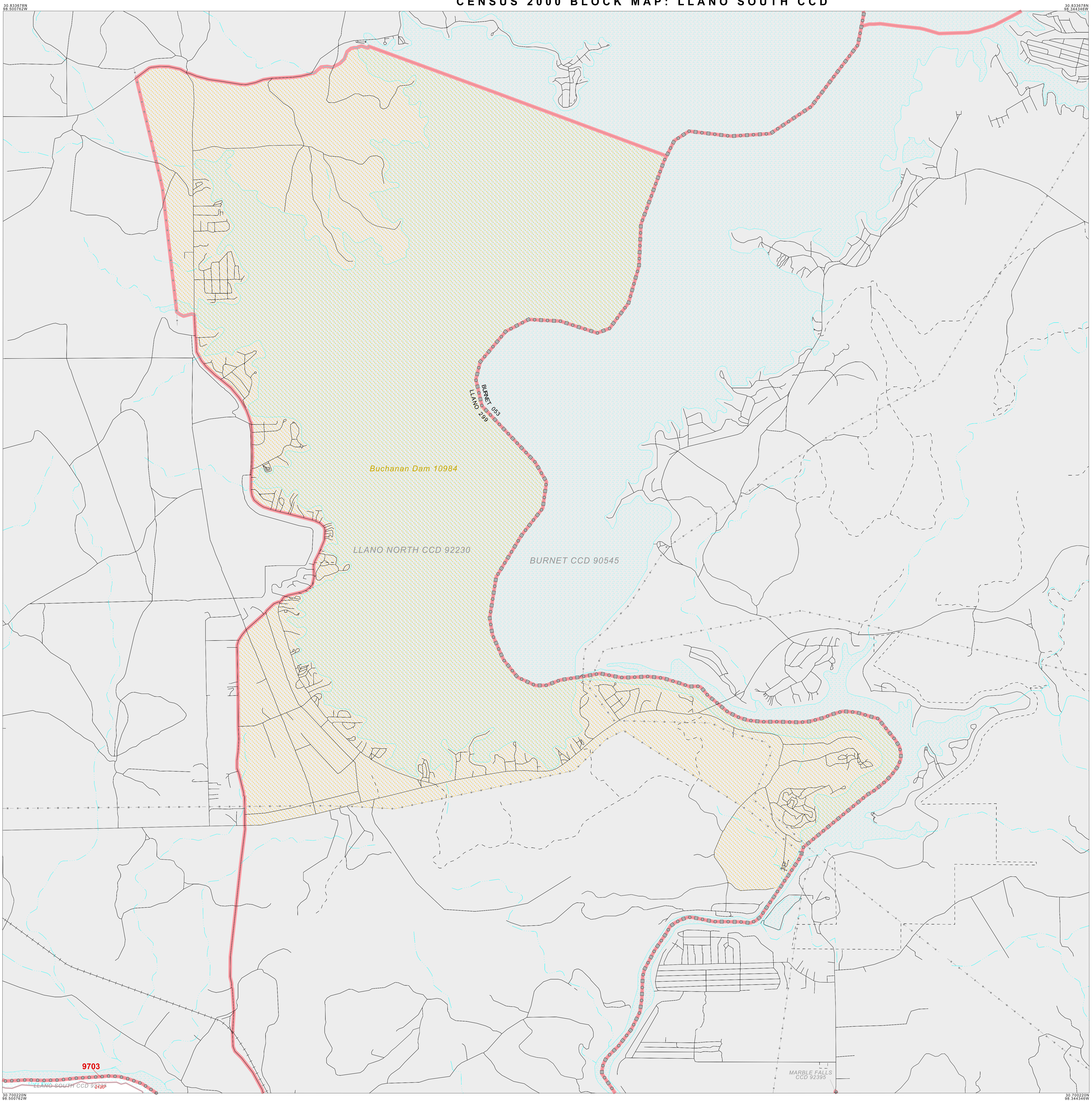


CENSUS 2000 BLOCK MAP: LLANO SOUTH CCD



**LEGEND**

SYMBOL	NAME STYLE
*****	INTERNATIONAL
*****	AIR (FEDERAL)
*****	Trust Land / Home Land
*****	OTSA / TDSA / ANVSA
*****	AMERICAN INDIAN TRIBAL SUBDIVISION
*****	AIR (State)
*****	SDA(SA)
*****	ANRC
*****	STATE (or statistically equivalent entity)
*****	COUNTY (or statistically equivalent entity)
*****	MINOR CIVIL DIV. / CCD <sup>1</sup>
*****	Consolidated City
*****	Place within Subject Entity
*****	Incorporated Place / CDP <sup>1</sup>
*****	Place outside of Subject Entity
*****	Incorporated Place / CDP <sup>1</sup>
*****	Corporate Offset Boundary
*****	<b>Census Tract</b>
*****	<b>Block<sup>2</sup></b>

**ABBREVIATION REFERENCE:** AIR = American Indian Reservation; Trust Land = Off-Reservation Trust Land; Home Land = Hawaiian Home Land; OTSA = Oklahoma Tribal Statistical Area; TDSA = Tribal Designated Statistical Area; ANVSA = Alaska Native Village Statistical Area; SDA(SA) = State Designated American Indian Statistical Area; ANRC = Alaska Native Regional Corporation; CDP = Census Designated Place; Minor Civil Div. (MCD) = Minor Civil Division; CCD = Census County Division

**FEATURES**

Highway	Pipe/Power Line	Stream/Shoreline
Secondary Road	Ridge/Physical Feature	Intermittent Stream
Deep Trail/Highway/Ferry	Property/Fence Line	River/Lake
Railroad	Nonvisible Boundary	Glacier

Where international, state, and/or county boundaries coincide, the map shows the boundary symbol for only the highest-ranking of these boundaries.  
<sup>1</sup> A "\*" following a place name indicates that the place is coterminous with a MCD. A "\*" following a block number indicates that the block number is repeated elsewhere in the block.  
<sup>2</sup> A "\*" following a block number indicates that the block number is repeated elsewhere in the block.

Key to Adjacent Sheets

3	4
7	8

Sheet Location within Entity

SHEET 4 OF 12 PARENT SHEETS  
 TOTAL SHEETS: 19 (Index 1; Parent 12; Inset 6)