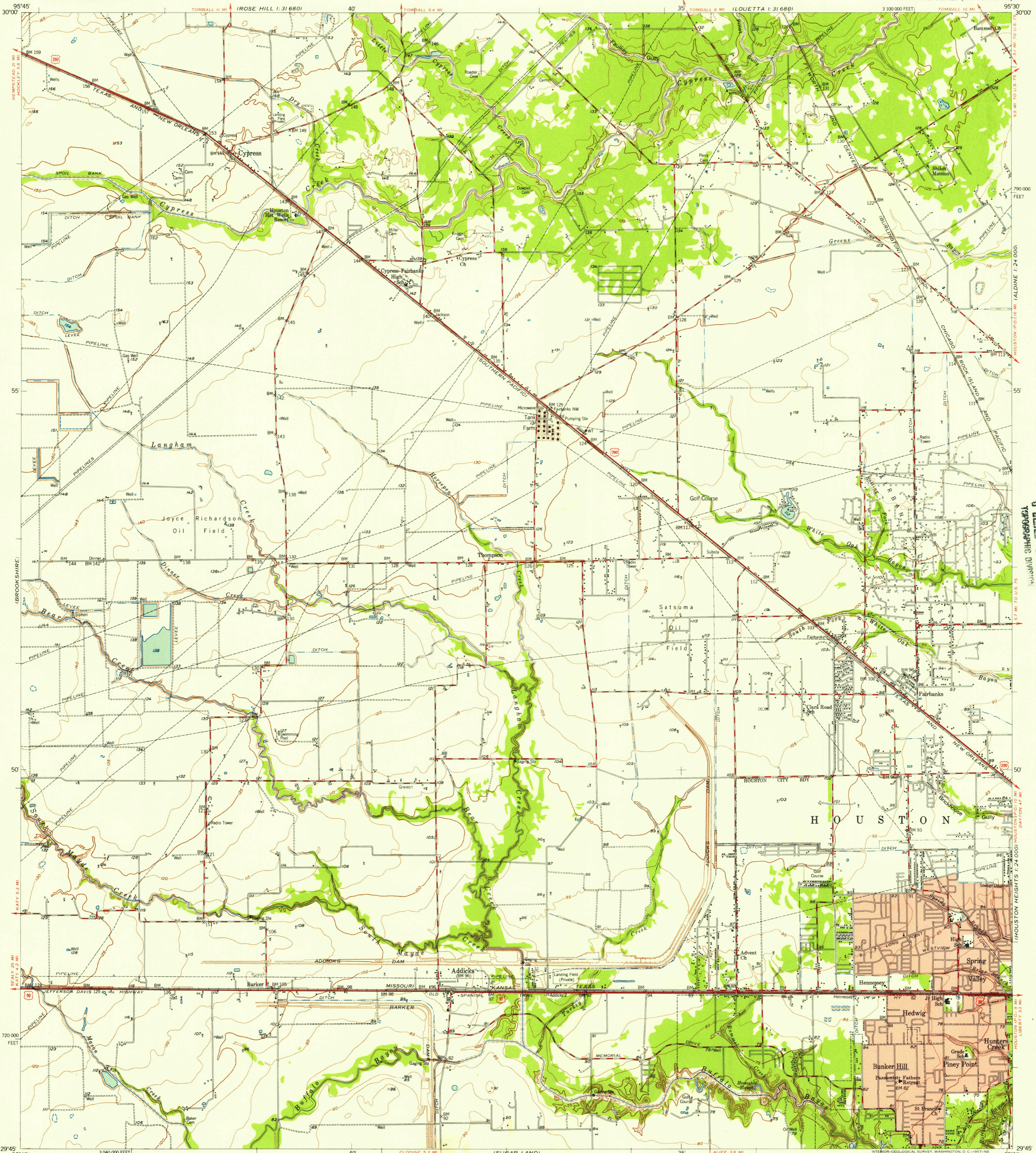


HOOKLEY
1:31,680

UNITED STATES
DEPARTMENT OF THE INTERIOR
GEOLOGICAL SURVEY

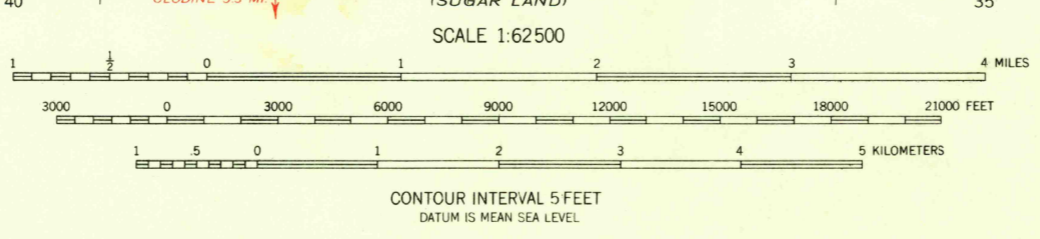
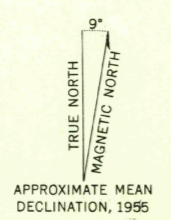
ADDICKS QUADRANGLE
TEXAS-HARRIS CO.
15 MINUTE SERIES (TOPOGRAPHIC)

(SPRING)
1:31,680



U.S.G.S.
FILE COPY
TOPOGRAPHIC DIVISION

Richmond
Mapped, edited, and published by the Geological Survey
Control by USGS and USC&GS
Culture and drainage in part compiled from aerial photographs
taken 1953. Topography from 1:31 680 scale maps of the
Satsuma, Cypress, Addicks, and Hillendahl 1915-1916,
revised by planetable surveys 1955
Polyconic projection. 1927 North American datum
10,000-foot grid based on Texas coordinate system,
south central zone
Red tint indicates areas in which only
landmark buildings are shown



ROAD CLASSIFICATION
Heavy-duty ——— Light-duty ———
Medium-duty ——— Unimproved dirt ———
U.S. Route

U.S.G.S.
FILE COPY
TOPOGRAPHIC DIVISION

QUADRANGLE LOCATION

ADDICKS, TEX.
N2945-W9530/15

1955

OCT 24 1957