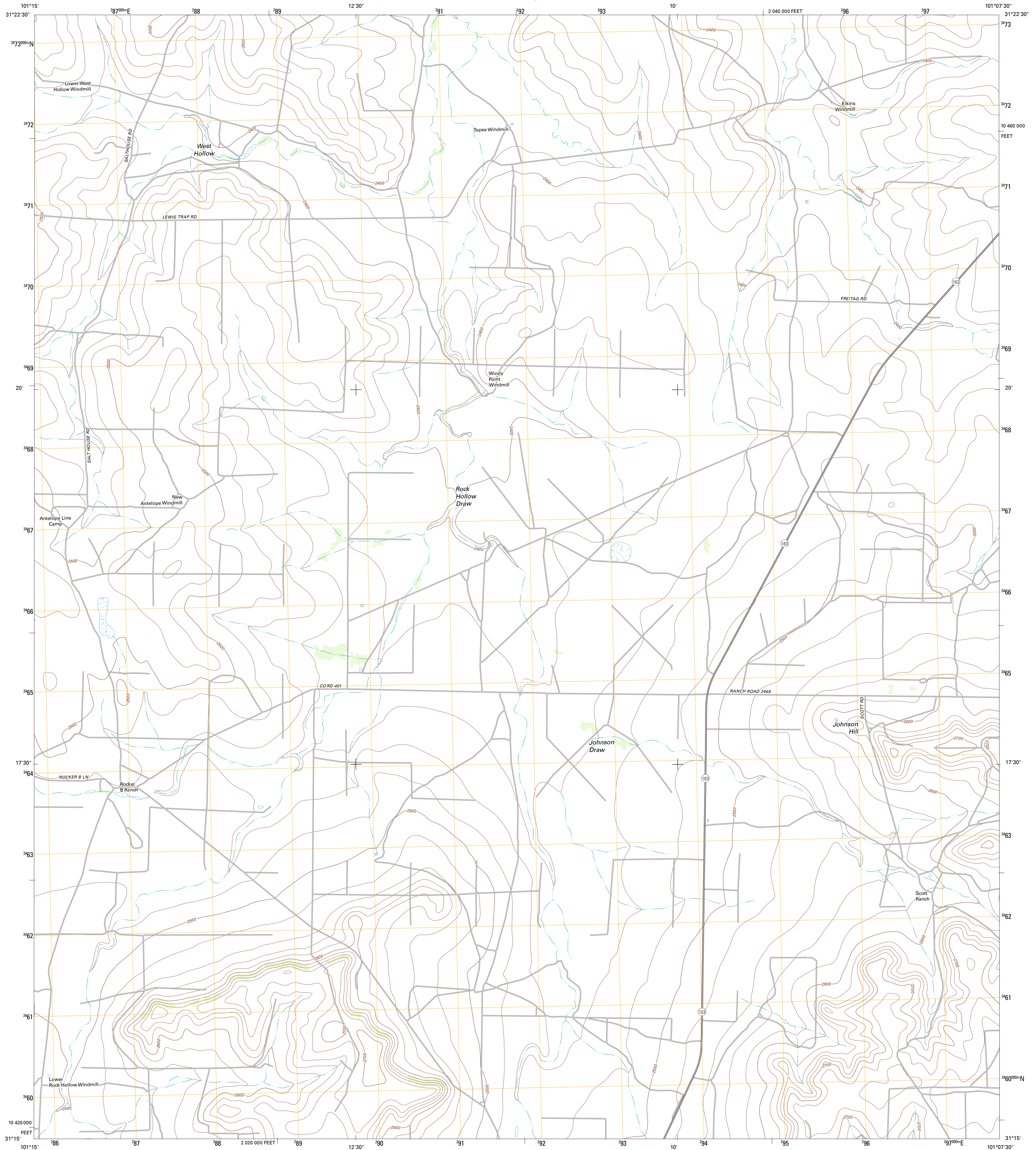




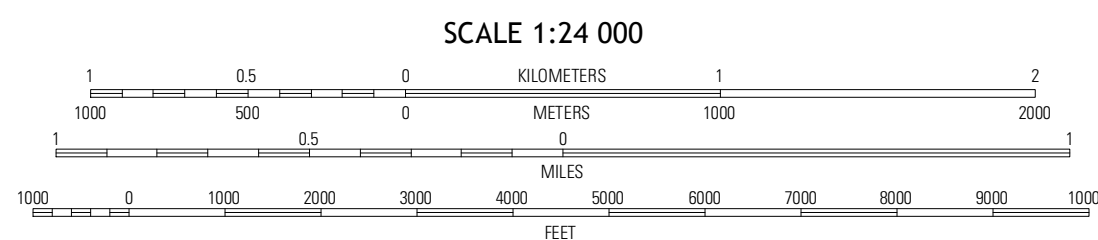
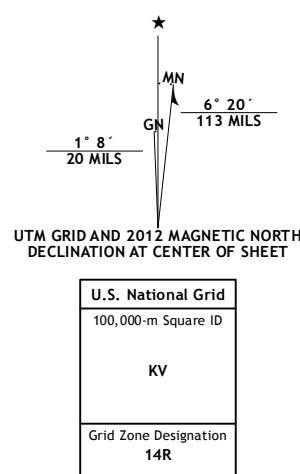
U.S. DEPARTMENT OF THE INTERIOR
U. S. GEOLOGICAL SURVEY



ROCKER B RANCH QUADRANGLE
TEXAS-IRON CO.
7.5-MINUTE SERIES



Produced by the United States Geological Survey
North American Datum of 1983 (NAD83)
World Geodetic System of 1984 (WGS84). Projection and
1 800-meter grid: Universal Transverse Mercator, Zone 14R.
10 000-foot ticks: Texas Coordinate System of 1983 (central zone)



CONTOUR INTERVAL 20 FEET
NORTH AMERICAN VERTICAL DATUM OF 1988

This map was produced to conform with the
National Geospatial Program US Topo Product Standards, 2011.
A metadata file associated with this product is draft version 0.6.7



QUADRANGLE LOCATION

South Mustang Draw NE	Cusey Draw	Bradford Draw
South Mustang Draw SE	Rocker B Ranch	Ketchum Mountain
Wiley	Barnhart	Barnhart NE

ADJOINING 7.5' QUADRANGLES

ROAD CLASSIFICATION

Interstate Route	State Route
US Route	Local Road
Ramp	4WD
Interstate Route	US Route
	State Route

ROCKER B RANCH, TX
2012