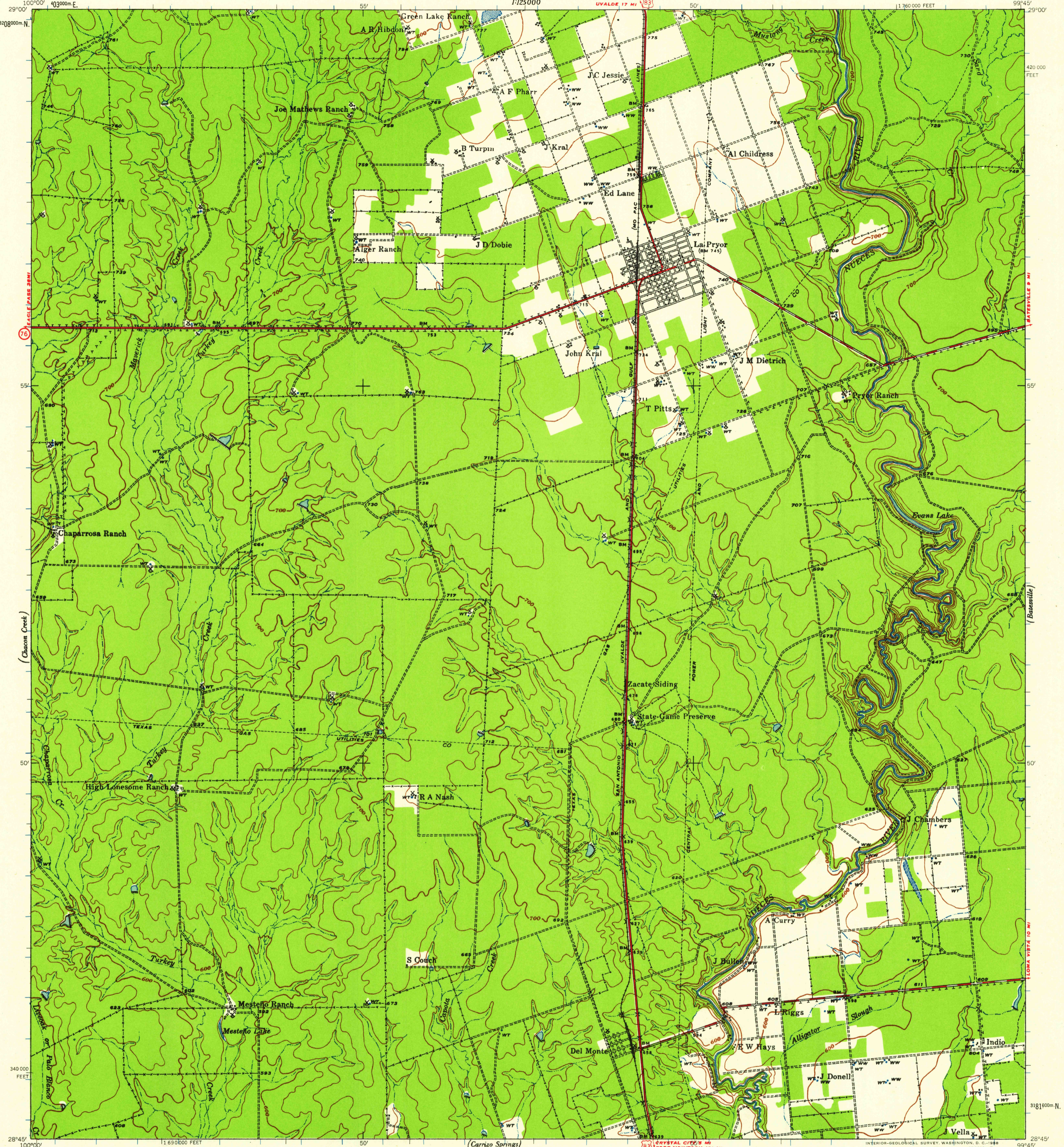
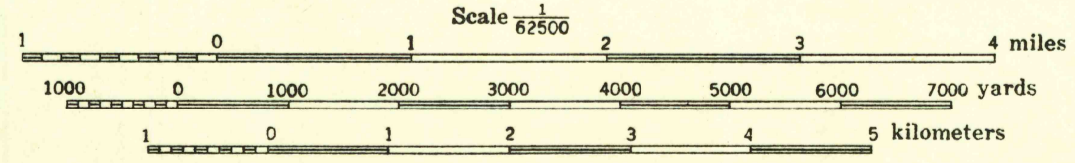


(Uvalde)
1:125,000



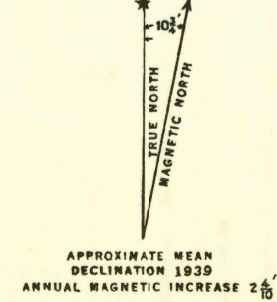
Prepared under direction of Engineer, Eighth Corps Area.
Control by U. S. C. & G. S.; U. S. G. S.
Field work by Eighth Engineers, 1939.
Aerial Photography by Air Corps, U. S. Army, 1939.
Contours determined by transit vertical angles and
stereoscopic examination of aerial photographs.
A Rehberg, Jr., Chief Draftsman.
Drawn by A. K. Greene, S. Sgt., Enl. Det., Office Engr., 8th C. A., 1941.
Polyconic projector. 1927 North American Datum.
Horizontal control extended into this map by radial line
method from U. S. C. & G. S. triangulation stations
and U. S. G. S. primary traverse stations.
Vertical control by U. S. C. & G. S., U. S. G. S. and transit
vertical angles by Corps of Engineers.



Contour interval 20 feet
Datum is mean sea level

10,000-FOOT GRID BASED ON TEXAS COORDINATE SYSTEM, SOUTH CENTRAL ZONE, SHOWN IN BLACK
1,000-METER UNIVERSAL TRANSVERSE MERCATOR GRID TICKS, ZONE 14, SHOWN IN BLUE

REPRINTED FROM MILITARY EDITION FOR CIVIL USE
FOR SALE BY U. S. GEOLOGICAL SURVEY, DENVER 2, COLORADO OR WASHINGTON 25, D. C.
A FOLDER DESCRIBING TOPOGRAPHIC MAPS AND SYMBOLS IS AVAILABLE ON REQUEST



ROUTES USUALLY TRAVELED
HARD IMPERVIOUS SURFACES
OTHER SURFACE IMPROVEMENTS
1941
83 U. S. ROUTE
76 STATE ROUTE

U.S.G.S.
FILE COPY

LA PRYOR, TEX.
N 2845 - W 9945 / 15
1939

DEC 11 1958
940