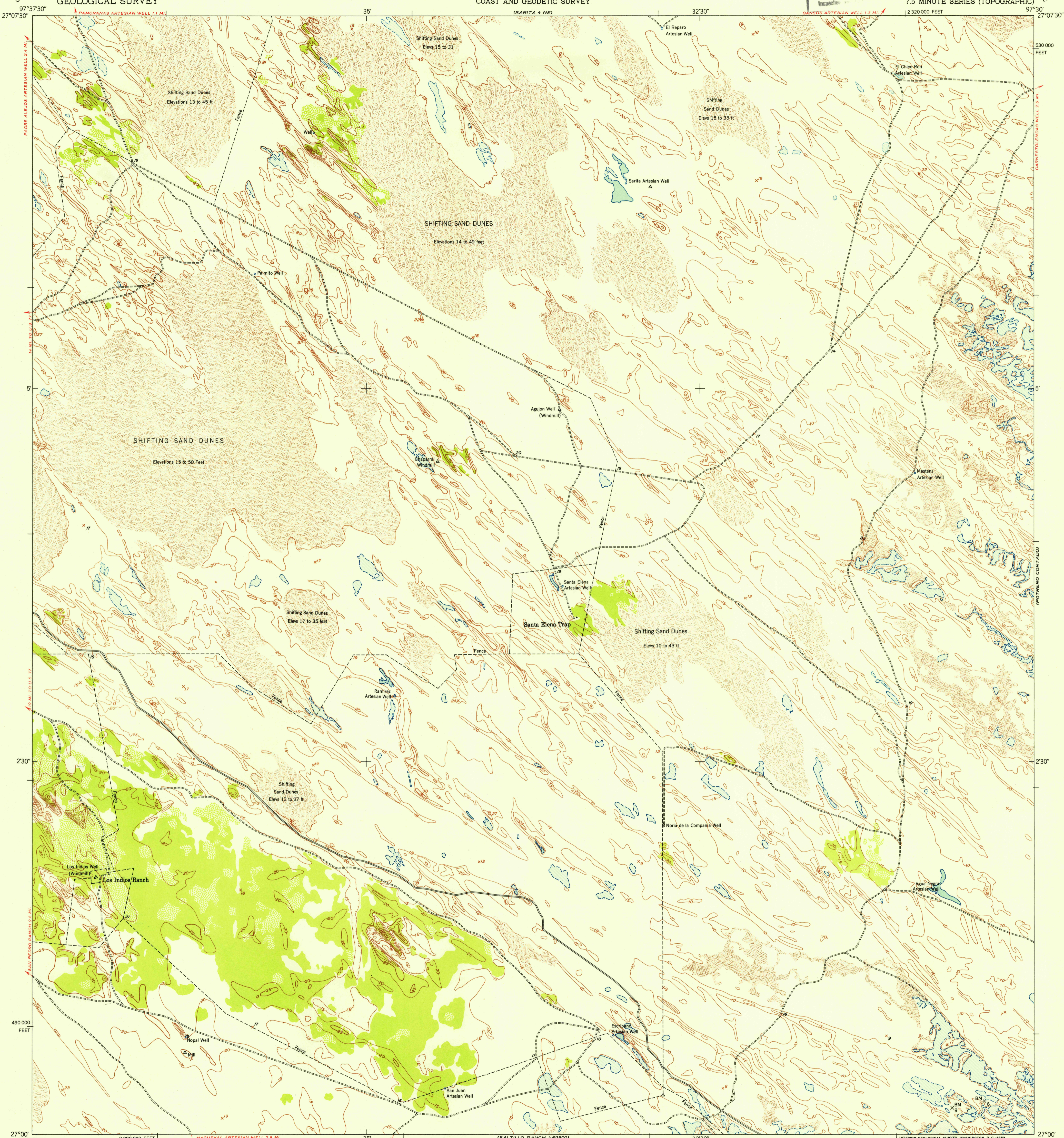
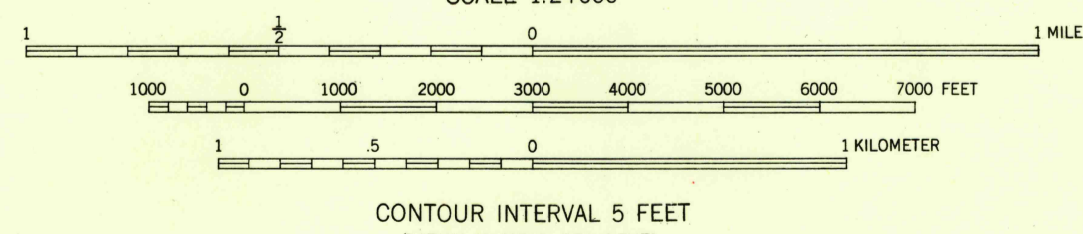
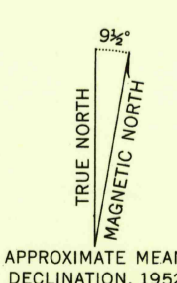


U.S.G.S.
FILE COPY



Mapped by the U. S. Coast & Geodetic Survey
Edited and published by the Geological Survey
Control by USC&GS
Culture and drainage in part compiled from
aerial photographs taken 1948-1949
Topography by plane-table surveys 1950. Field check 1952
Polyconic projection. 1927 North American datum
10,000-foot grid based on Texas coordinate system,
south zone
Water stages in this area vary with meteorological conditions
Approximate limits of occasional inundation shown by dashed blue lines
where mean high water is undetermined for lack of visual evidence



ROAD CLASSIFICATION USC&GS T-9202

Heavy-duty	LANE IS LANE	Light-duty	-----
Medium-duty	LANE IS LANE	Unimproved dirt	-----
U. S. Route	○	Slate Route	○

THIS MAP COMPLIES WITH NATIONAL MAP ACCURACY STANDARDS
FOR SALE BY U. S. GEOLOGICAL SURVEY, FEDERAL CENTER, DENVER, COLORADO OR WASHINGTON 25, D. C.
A FOLDER DESCRIBING TOPOGRAPHIC MAPS AND SYMBOLS IS AVAILABLE ON REQUEST

U.S.G.S.
FILE COPY

SARITA 4 SE, TEX.
N2700-W9730/7.5
1952

JUN 23 1953