

DEPARTMENT OF THE INTERIOR
U.S. GEOLOGICAL SURVEY

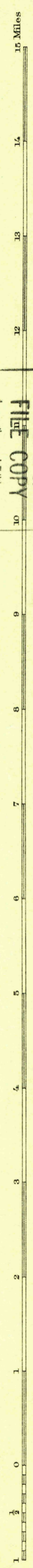
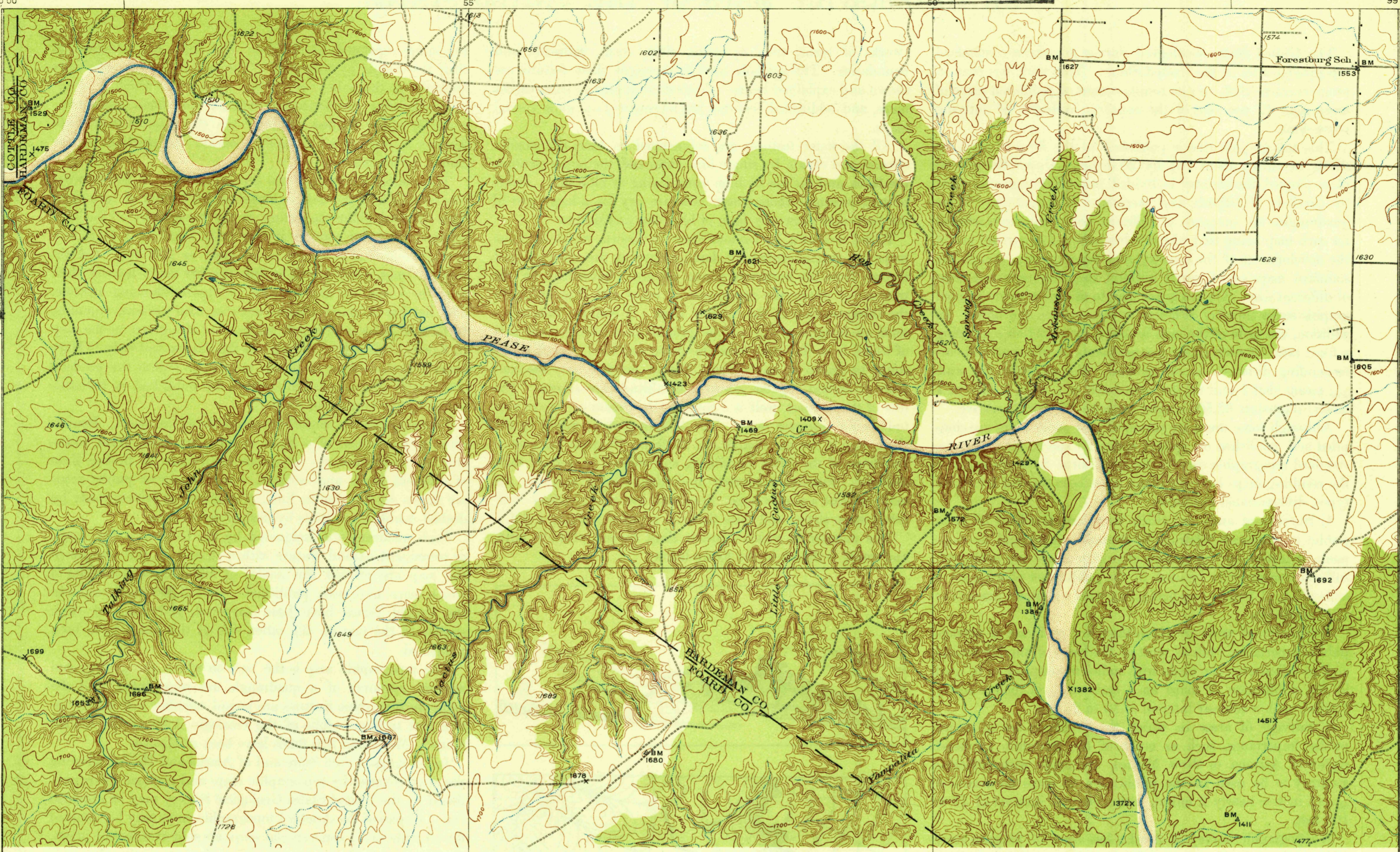
STATE OF TEXAS
BOARD OF WATER ENGINEERS
JOHN A. NORRIS, CHAIRMAN
C. S. CLARK, A.H. DUNLAP

U. S. G. S.
FILE COPY
Inspection and Editing.

TEXAS
VIVIAN QUADRANGLE

U. S. G. S.
FILE COPY
Inspection and Editing.

U. S. G. S.
FILE COPY
Inspection and Editing.



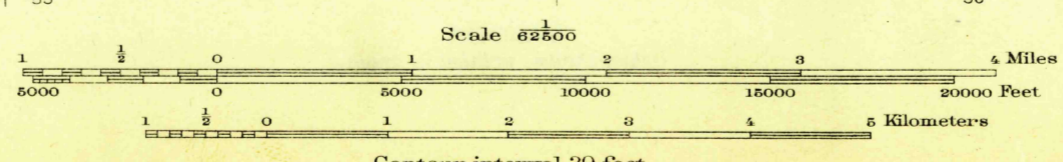
PRELIMINARY EDITION
UNSURVEYED AREA

1220 000
YARDS

Topography by R.W. Burchard and S.T. Fenick
Contours and drainage in part compiled from
aerial photographs taken by Air Corps, U.S. Army
Control by U.S. Geological Survey
Surveyed in 1928-1927

U. S. G. S.
FILE COPY
Inspection and Editing.

TRUE NORTH
MAGNETIC NORTH
APPROXIMATE MEAN
DECLINATION, 1927



Contour interval 20 feet
Datum is mean sea level

Polyconic projection, North American datum
5000 yard grid based upon U.S. zone system, D

Name changed to
MAR 28 1962



TEACUP MOUNTAIN

MAY 23 1932 (2060)

VIVIAN, TEX.
Edition of 1932

2060