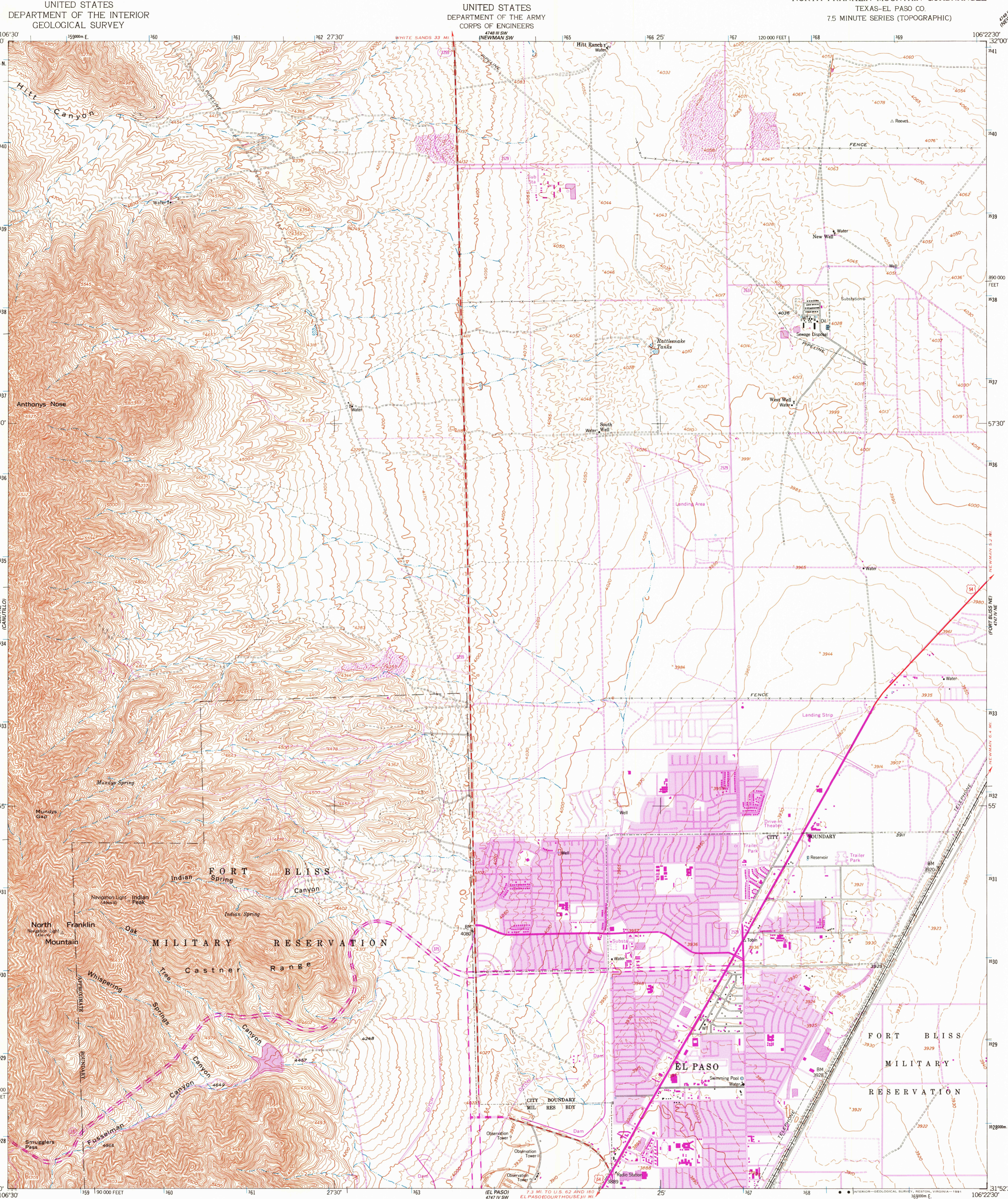


32°00' N
31°52'30" N
31°51'00" N
31°49'30" N
31°48'00" N
31°46'30" N
31°45'00" N
31°43'30" N
31°42'00" N
31°40'30" N
31°39'00" N
31°37'30" N
31°36'00" N
31°34'30" N
31°33'00" N
31°31'30" N
31°30'00" N
31°28'30" N
31°27'00" N
31°25'30" N
31°24'00" N
31°22'30" N
31°21'00" N
31°19'30" N
31°18'00" N
31°16'30" N
31°15'00" N
31°13'30" N
31°12'00" N
31°10'30" N
31°09'00" N
31°07'30" N
31°06'00" N
31°04'30" N
31°03'00" N
31°01'30" N
31°00'00" N



106°30' W
106°27'30" W
106°25' W
106°22'30" W
106°20' W
106°17'30" W
106°15' W
106°12'30" W
106°10' W
106°07'30" W
106°06'00" W
106°04'30" W
106°03'00" W
106°01'30" W
106°00'00" W

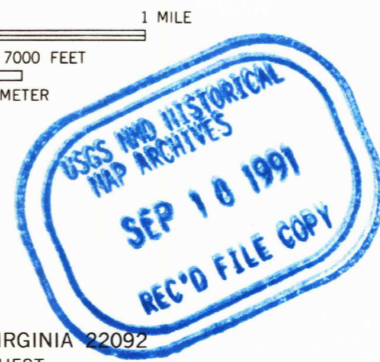
Mapped by the Defense Mapping Agency
Published for civil use by the Geological Survey
Control by USGS, NOS/NOAA, and USCE
Topography by photogrammetric methods from aerial photographs taken 1954. Photography field annotated 1955
Polyconic projection. 1927 North American Datum
10,000-foot grid based on Texas coordinate system, central zone
1000-meter Universal Transverse Mercator grid ticks, zone 13, shown in blue
The difference between 1927 North American Datum and North American Datum of 1983 (NAD 83) for 7.5 minute intersections is given in USGS Bulletin 1875. The NAD 83 is shown by dashed corner ticks
There may be private inholdings within the boundaries of the National or State reservations shown on this map

Revisions shown in purple compiled by the Geological Survey from aerial photographs taken 1967 and 1973
This information not field checked
Purple tint indicates extension of urban areas

SCALE 1:24,000
CONTOUR INTERVAL 20 FEET
DASHED LINES REPRESENT 5 AND 10-FOOT CONTOURS
NATIONAL GEODETIC VERTICAL DATUM OF 1929

ROAD CLASSIFICATION
Heavy-duty ——— Light-duty ———
Medium-duty ——— Unimproved dirt ———
U.S. Route ——— State Route ———

3106-433
31106-H4-TF-024
1955
PHOTOREVISED 1967 AND 1973
DMA 4747 IV NW-SERIES V882



THIS MAP COMPLIES WITH NATIONAL MAP ACCURACY STANDARDS
FOR SALE BY U. S. GEOLOGICAL SURVEY, DENVER, COLORADO 80225, OR RESTON, VIRGINIA 20192
A FOLDER DESCRIBING TOPOGRAPHIC MAPS AND SYMBOLS IS AVAILABLE ON REQUEST