

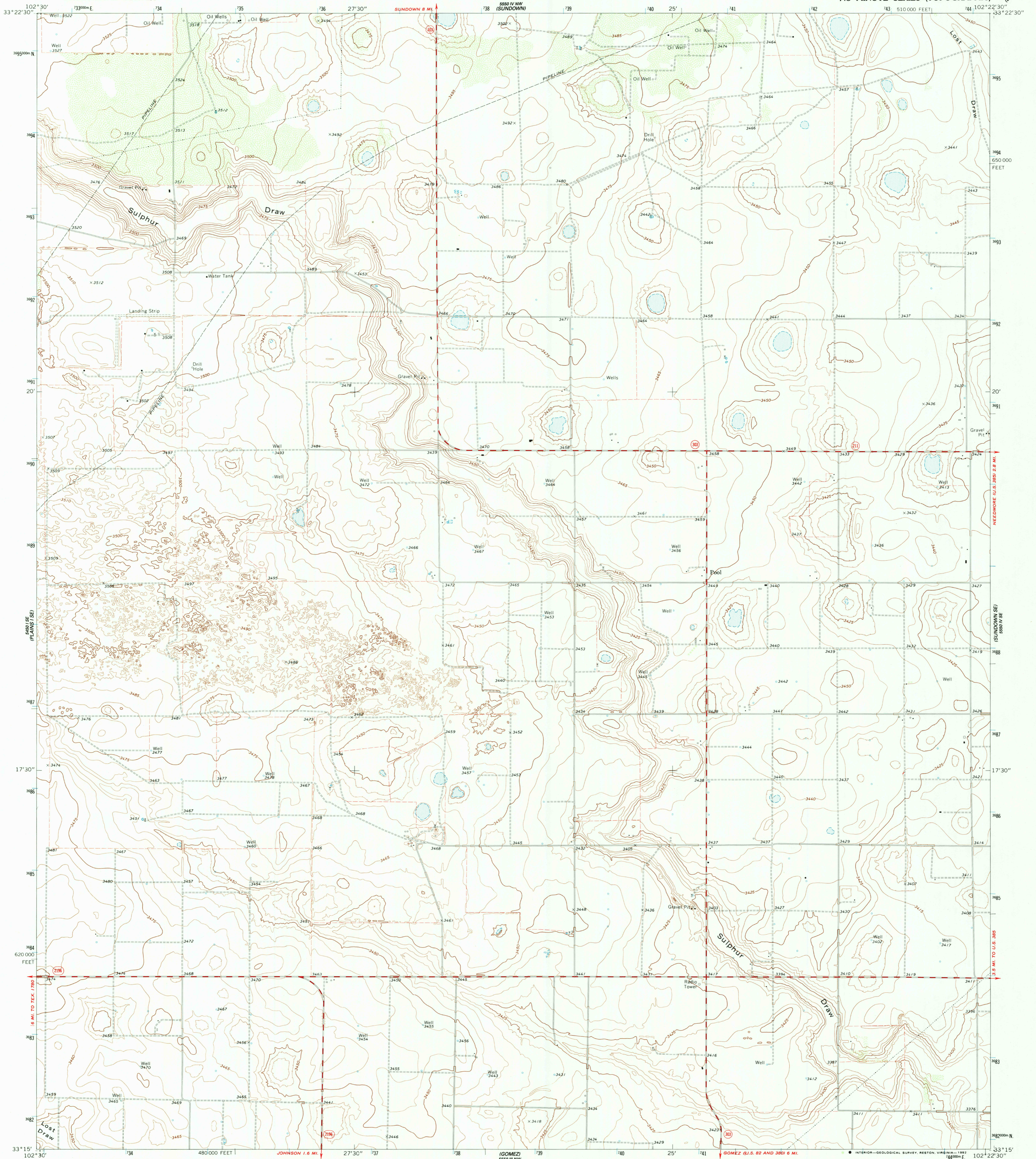
PLANS 15E

UNITED STATES
DEPARTMENT OF THE INTERIOR
GEOLOGICAL SURVEY

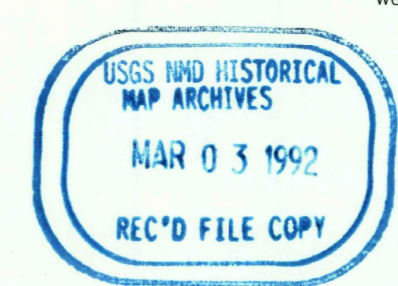
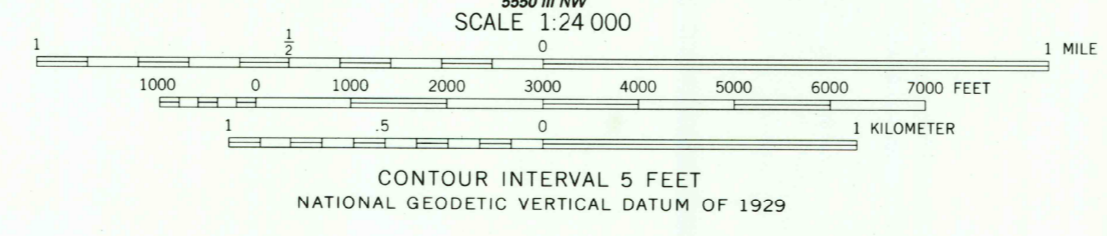
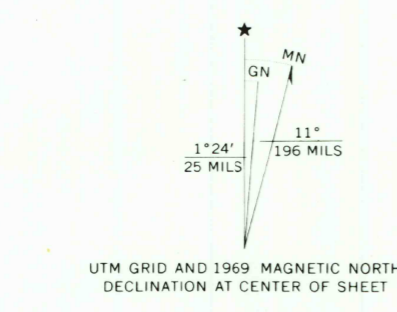
STATE OF TEXAS
TEXAS WATER DEVELOPMENT BOARD

POOL QUADRANGLE
TEXAS-TERRY CO.
7.5 MINUTE SERIES (TOPOGRAPHIC)

PLANS 16E
LOCKETVILLE



Mapped, edited, and published by the Geological Survey
Control by USGS and NOS/NOAA
Topography by photogrammetric methods from aerial photographs taken 1967. Field checked 1969.
Polyconic projection. 1927 North American Datum
10,000-foot grid based on Texas coordinate system,
north central zone
1000-meter Universal Transverse Mercator grid ticks, zone 14,
shown in blue.
The difference between 1927 North American Datum and North
American Datum of 1983 (NAD 83) for 7.5 minute intersections is
given in USGS Bulletin 1875. The NAD 83 is shown by dashed
corner ticks
Fine red dashed lines indicate selected fence lines
Map photoinspected 1979
No major culture or drainage changes observed



ROAD CLASSIFICATION
Secondary highway, all weather, Light-duty road, all weather,
hard surface improved surface
Unimproved road, fair or dry weather
State Route

THIS MAP COMPLIES WITH NATIONAL MAP ACCURACY STANDARDS
FOR SALE BY U.S. GEOLOGICAL SURVEY
DENVER, COLORADO 80225, OR RESTON, VIRGINIA 22092
A FOLDER DESCRIBING TOPOGRAPHIC MAPS AND SYMBOLS IS AVAILABLE ON REQUEST

3302-132

POOL, TEX.
33102-C4-TF-024
1969
PHOTOINSPECTED 1979
DMA 5550 IV SW-SERIES V882