

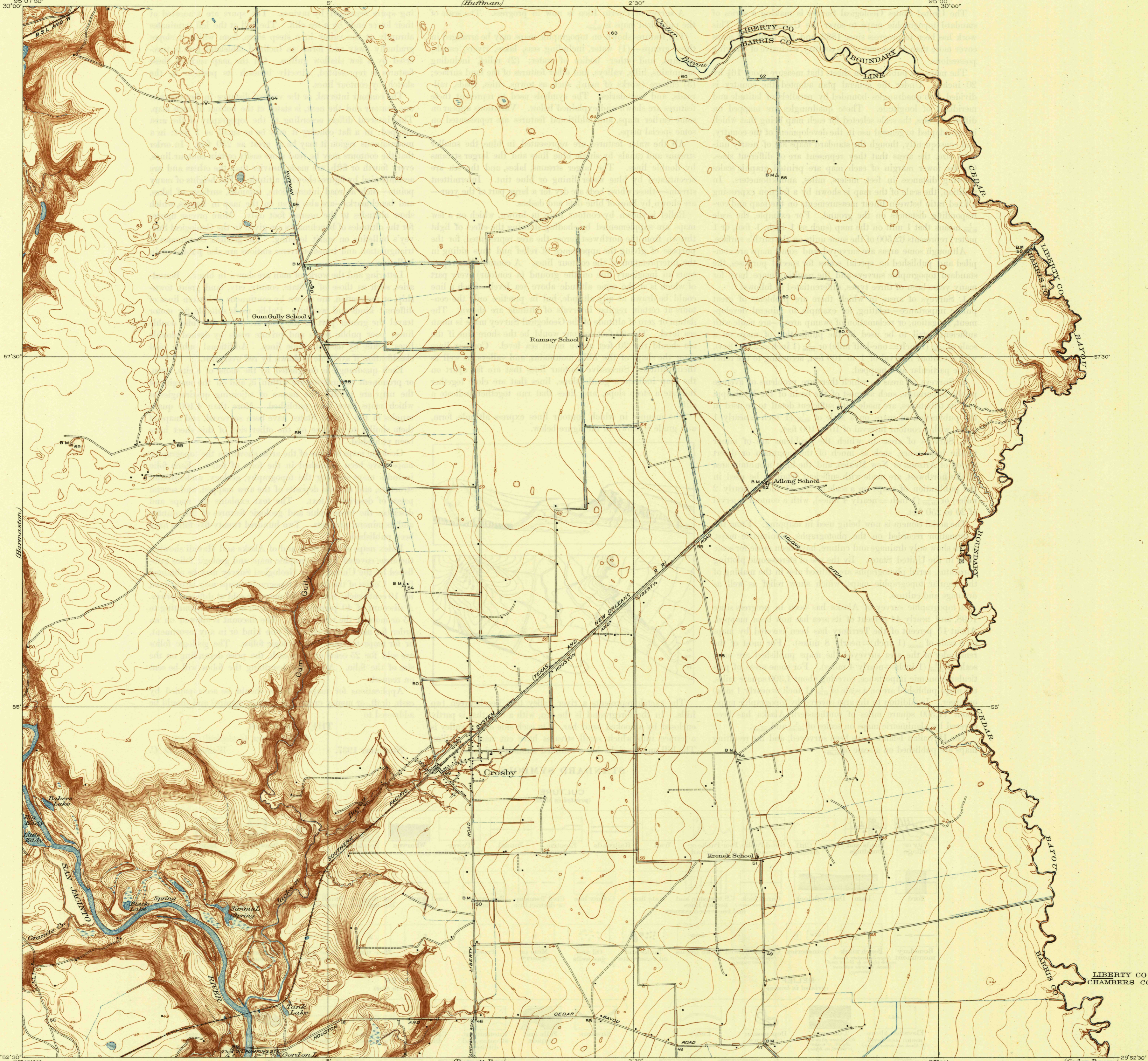
Almon State Hill

U.S.G.S.
FILE COPY
Inspection and Editing.

UNITED STATES
DEPARTMENT OF THE INTERIOR
GEOLOGICAL SURVEY

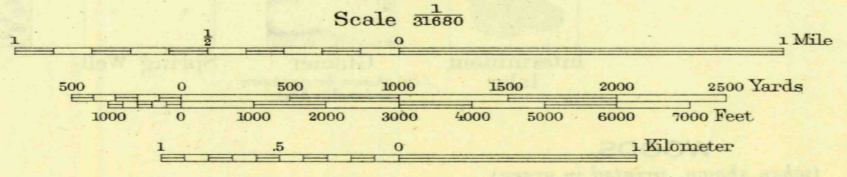
HARRIS COUNTY, TEXAS
REPRESENTED BY THE
COUNTY JUDGE AND COUNTY COMMISSIONERS
(Huffman)

TEXAS
(HARRIS COUNTY)
CROSBY QUADRANGLE



W.H. Herron, Acting Chief Geographer.
C.H. Birdseye, Topographic Engineer in charge.
Topography by B.A. Jenkins, H.W. Feabody,
F.A. Danforth, C.C. Holder, D.H. Watson, and L.B. Roberts.
Control by E.L. McNair and D.S. Birkett.
Surveyed in 1916.

DHW	COH
RHW	BAJ
FAD	



Edition of 1919, reprinted 1945.
Polyconic projection, North American datum.

TRUE NORTH
MAGNETIC NORTH
APPROXIMATE MEAN
DECLINATION, 1918

U.S.G.S.
FILE COPY
Inspection and Editing.

TEX.
CROSBY
N29525-W9458.6/75X8.9