

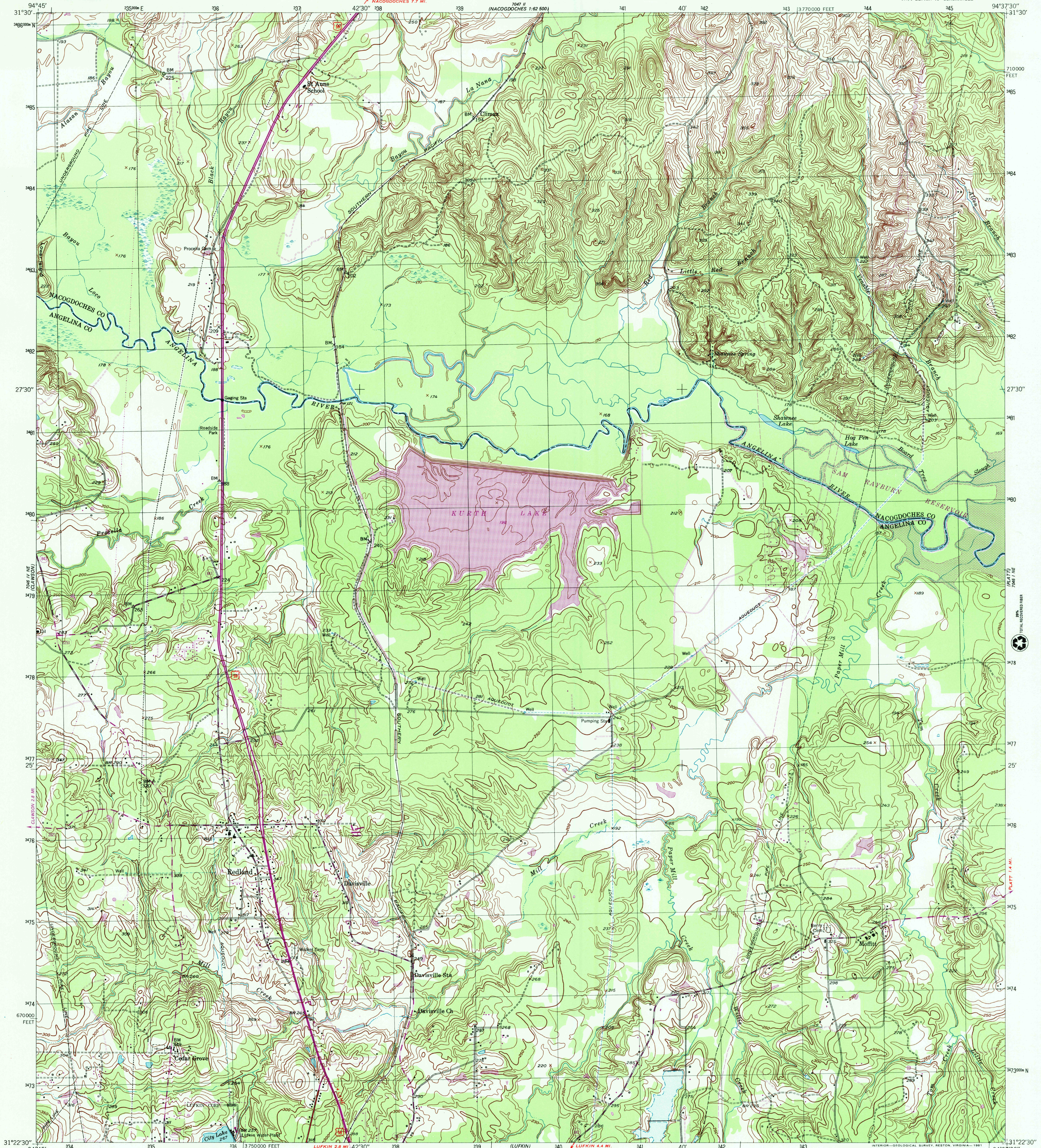
Scale 1:24,000  
1 inch = 2000 feet



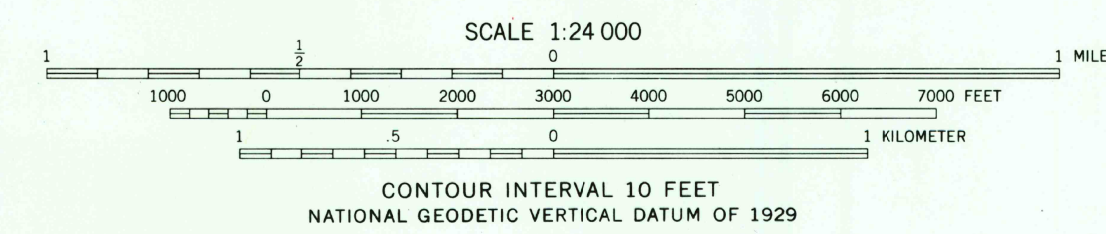
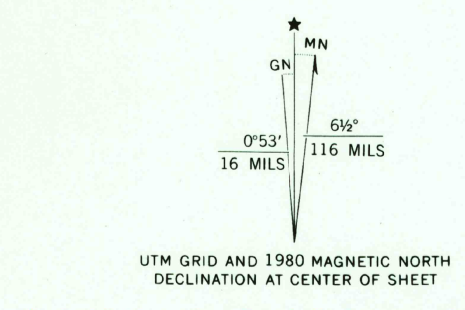
U.S. DEPARTMENT OF THE INTERIOR  
U.S. GEOLOGICAL SURVEY

REDLAND QUADRANGLE  
TEXAS  
7.5 MINUTE SERIES (TOPOGRAPHIC)  
NW4 LUFKIN 15' QUADRANGLE

Scale 1:24,000  
1 inch = 2000 feet



Maped, edited, and published by the Geological Survey  
Control by USGS and NOS/NOAA  
Culture and drainage in part compiled from  
aerial photographs taken 1947  
Topography by plane-table methods 1948-1949  
Polyconic projection. 1927 North American datum  
10,000 foot grid based on Texas coordinate system,  
central zone  
1000-meter Universal Transverse Mercator grid, zone 15  
To place on the predicted North American Datum 1983  
move the projection lines 15 meters south and  
20 meters east as shown by dashed corner ticks  
Revisions shown in purple and woodland compiled from  
aerial photographs taken 1977 and other source data  
This information not field checked. Map edited 1980



ROAD CLASSIFICATION

HARD SURFACE ALL WEATHER ROADS	DRY WEATHER ROADS
Heavy-duty  1 LANE 16 LANE	Improved dirt
Medium-duty  4 LANE 6 LANE	Unimproved dirt

U. S. Route    State Route

THIS MAP COMPLIES WITH NATIONAL MAP ACCURACY STANDARDS  
FOR SALE BY U.S. GEOLOGICAL SURVEY, P.O. BOX 25286, DENVER, COLORADO 80225  
A FOLDER DESCRIBING TOPOGRAPHIC MAPS AND SYMBOLS IS AVAILABLE ON REQUEST

RECEIVED  
SEP 30 2001  
HISTORICAL MAP ARCHIVES

REDLAND, TEX.  
NW4 LUFKIN 15' QUADRANGLE  
N3122.5-W9437.517.5  
EDITION OF 1960  
PHOTOREVISED 1980  
DMA 7046 I NW-SERIES V882

