

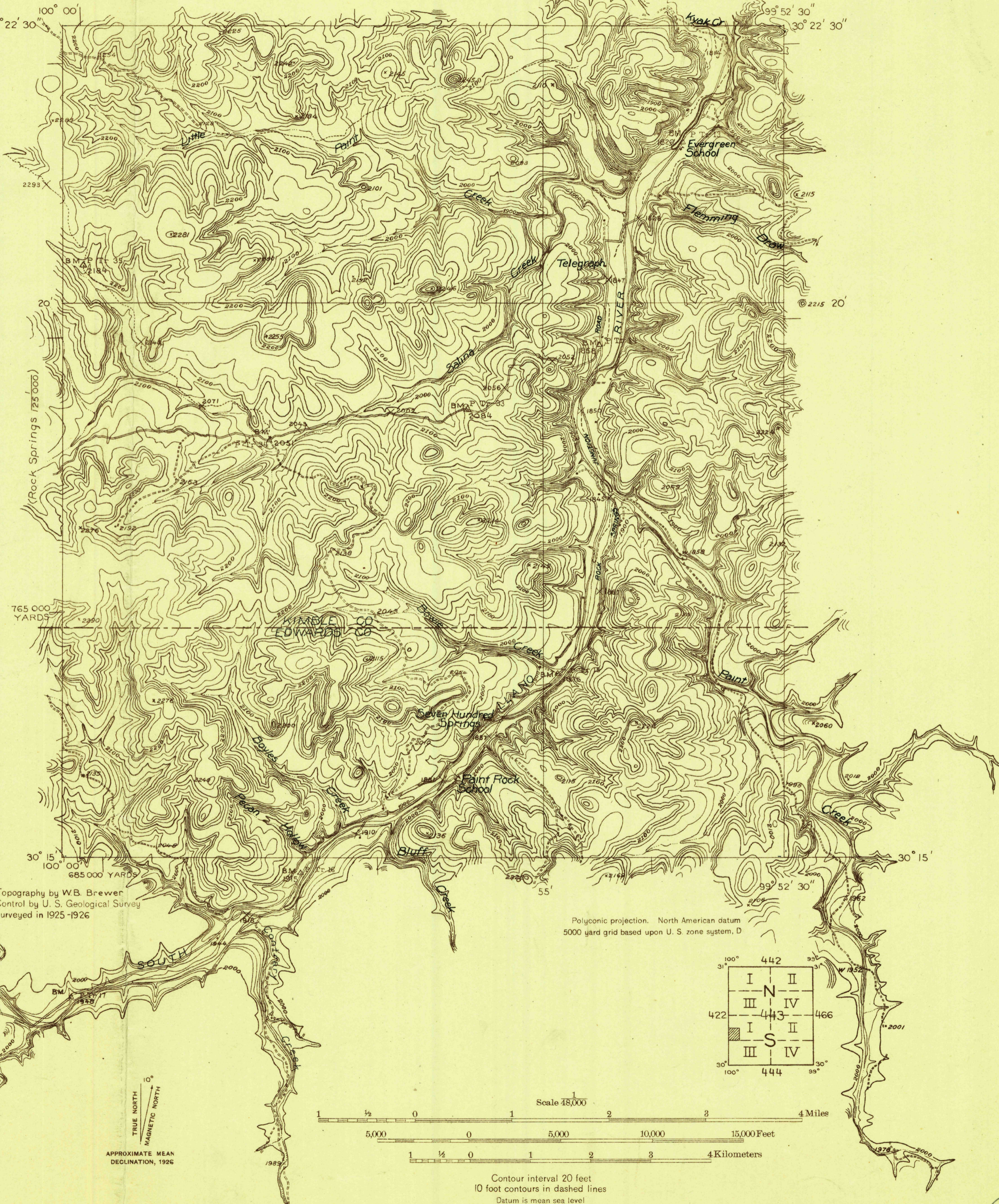
DEPARTMENT OF THE INTERIOR
U. S. GEOLOGICAL SURVEY

443-S-1-W/2-SW/4
STATE OF TEXAS
BOARD OF WATER ENGINEERS
JOHN A. NORRIS, CHAIRMAN
C. S. CLARK, A. H. DUNLAP

Advance sheet
Subject to correction

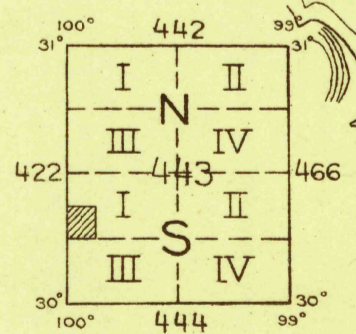
TEXAS
158' SEGOVIA 2-c QUADRANGLE

30° 22' 30" 100° 00' 30° 22' 30"

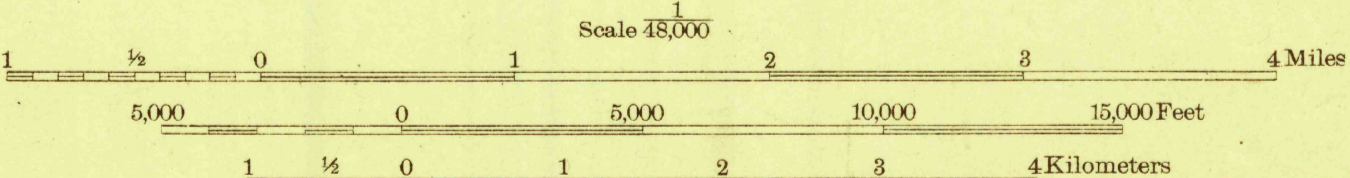


Topography by W.B. Brewer
Control by U. S. Geological Survey
Surveyed in 1925-1926

Polygonic projection. North American datum
5000 yard grid based upon U. S. zone system, D



TRUE NORTH
MAGNETIC NORTH
APPROXIMATE MEAN
DECLINATION, 1926



Contour interval 20 feet
10 foot contours in dashed lines
Datum is mean sea level

SEGOVIA 2-c, TEXAS

BOARD OF SURVEYS & MAPS
RECEIVED
OCT 1 1926
OFFICE OF THE SECRETARY

RETURN TO:
USGS AND HISTORICAL MAP ARCHIVES